



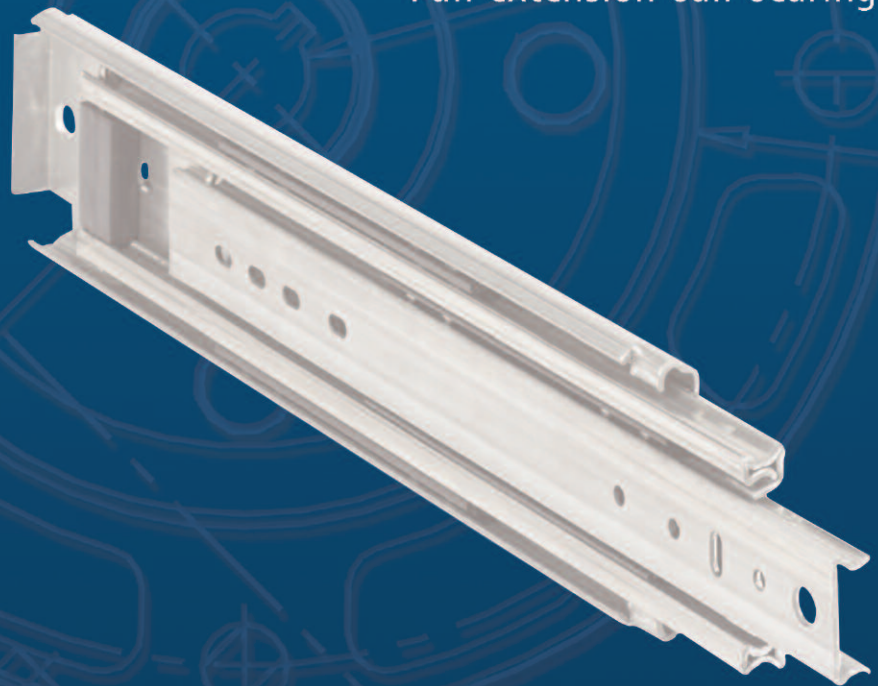
# Heavy-Duty Slides

for Industrial applications



**KA 3320**

Full extension ball bearing slide





# KA 3320

Full extension ball bearing slide

3/4" (19 mm) installation width

Load capacity 300-500 lbs\* (136-227 kg)

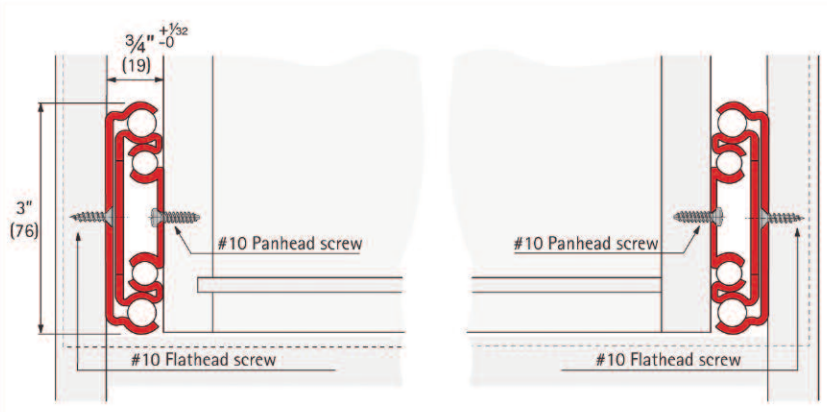
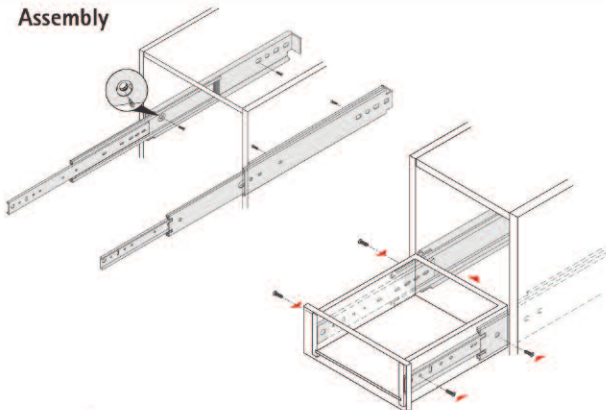


- **Load Rating:** 300-500 lbs\*
- **Travel:** Full extension slide
- **Features:** Precision ball bearings, Non-handed, Non-disconnect, Cushioned in-stop
- **Side Space:** 3/4" (19 mm) side space
- **Lengths:** Available in even lengths 10"-36", 40", 42", 44", 48", 60"  
Special lengths available upon request
- **Finish:** Pre-galvanized
- **Optional:** Black E-Coat, White E-Coat, White Powdercoat available upon request
- **RoHS:** All slides are RoHS compliant

\* 300 lbs - 75,000 cycles, 500 lbs - 10,000 cycles  
Mobile applications: up to 325 lbs

Description	Length inch / mm	Min. cabinet depth inch / mm	Distributor Pack Order No. (polybag / no screws)	PU	Bulk Pack Order No.	PU	Load capacity				
							Full Travel		Full Travel		
							75,000 cycles		10,000 cycles		
							lbs	kg	lbs	kg	
KA 3320 10"	10	254	10.25 260	-	-	113141900	5 sets	325	147	500	227
KA 3320 12"	12	305	12.25 311	073 287	5 sets	9 020 128	5 sets	325	147	500	227
KA 3320 14"	14	356	14.25 362	073 288	5 sets	9 020 129	5 sets	325	147	500	227
KA 3320 16"	16	406	16.25 413	073 289	5 sets	9 020 130	5 sets	325	147	500	227
KA 3320 18"	18	457	18.25 463	073 290	5 sets	9 020 131	5 sets	325	147	500	227
KA 3320 20"	20	508	20.25 514	073 291	5 sets	9 020 132	5 sets	300	136	460	209
KA 3320 22"	22	559	22.25 565	073 292	5 sets	9 020 133	5 sets	280	127	430	195
KA 3320 24"	24	610	24.25 616	073 293	5 sets	9 020 134	5 sets	268	122	410	186
KA 3320 26"	26	660	26.25 667	073 294	5 sets	9 020 135	5 sets	260	118	400	181
KA 3320 28"	28	711	28.25 718	073 295	5 sets	9 020 136	5 sets	254	115	390	177
KA 3320 30"	30	762	30.25 768	073 296	5 sets	9 020 137	5 sets	247	112	380	172
KA 3320 32"	32	813	32.25 819	041 367	2 sets	9 020 138	3 sets	240	109	370	168
KA 3320 34"	34	863	34.25 870	041 368	2 sets	9 020 139	3 sets	234	106	360	163
KA 3320 36"	36	914	36.25 921	041 369	2 sets	9 020 140	3 sets	226	103	348	158
KA 3320 40"	40	1016	40.25 1022	-	-	052 271	3 sets	210	95	320	145
KA 3320 42"	42	1067	42.25 1073	-	-	052 272	3 sets	200	91	310	141
KA 3320 44"	44	1118	44.25 1124	-	-	113140700	3 sets	183	83	280	127
KA 3320 48"	48	1219	48.25 1226	-	-	052 273	3 sets	183	83	280	127
KA 3320 60"	60	1524	60.25 1530	-	-	052 274	2 sets	143	65	220	100

## Assembly

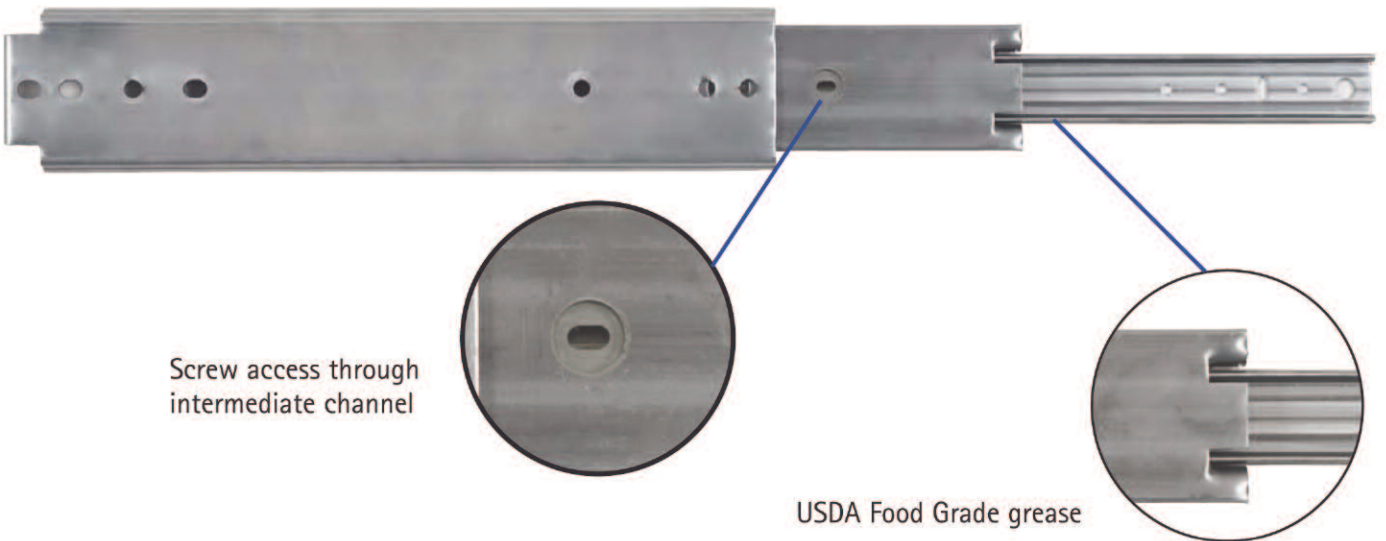
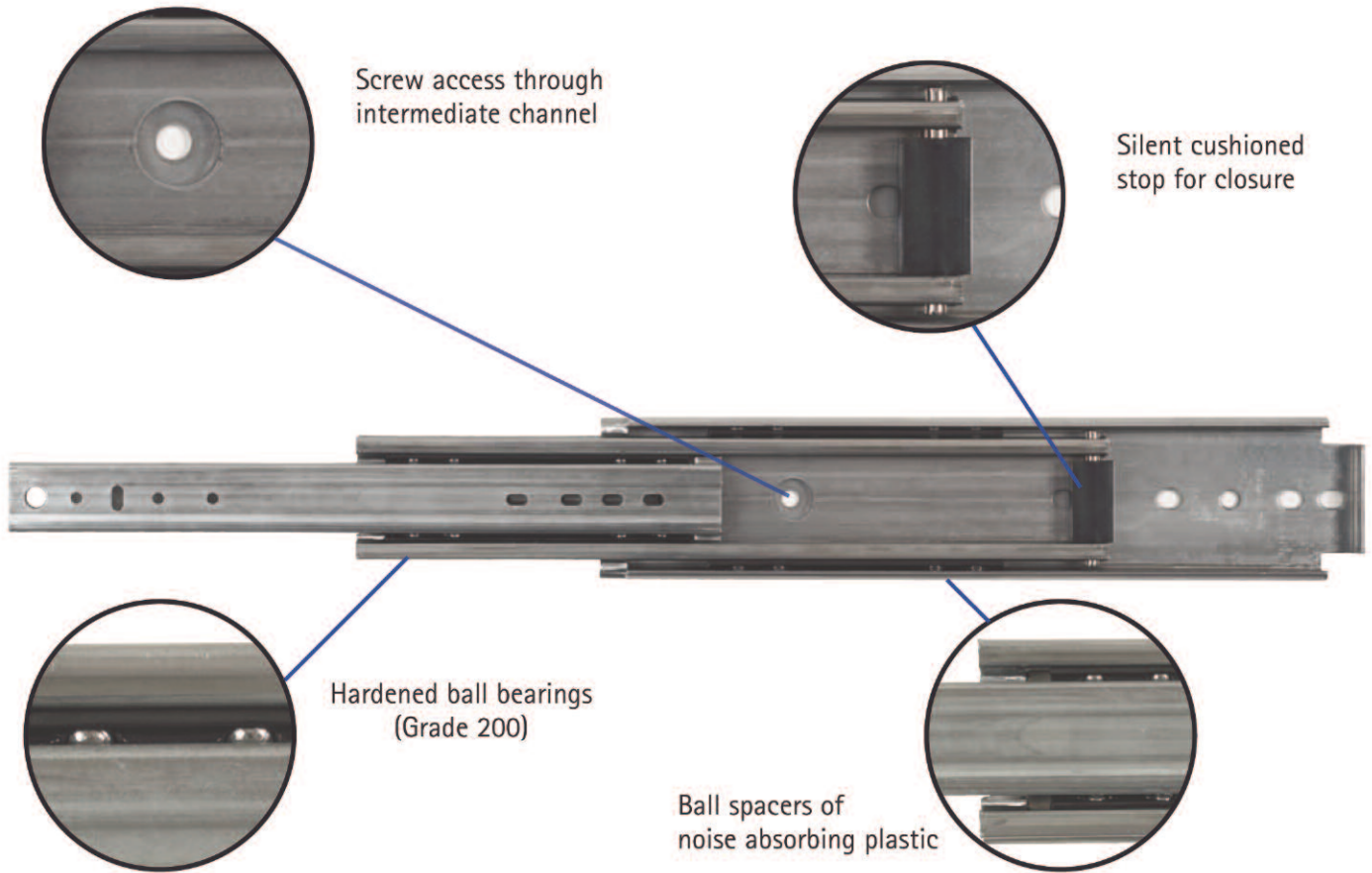


# KA 3320

Full extension ball bearing slide

3/4" (19 mm) installation width

Load capacity 300-500 lbs\* (136-227 kg)



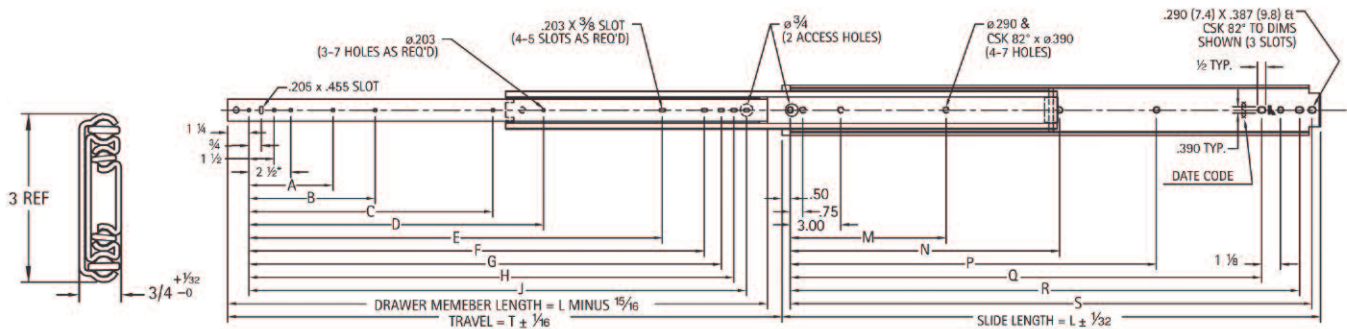


# KA 3320 Installation dimensions

3320-HDSLIDE-1008-Canimex-4PG

UOM	Slide Length	Travel	Drawer Member Mounting Hole Locations									Cabinet Member Mounting Hole Locations						
			L	T	A	B	C	D	E	F	G	H	J	M	N	P	Q	R
inch	10*	10	-	-	-	-	-	4 1/8	5 1/8	5 3/8	6 1/8	-	-	-	7 1/8	8 1/4	9	
mm	254.0	254.0	-	-	-	-	-	103.2	128.6	147.6	166.7	-	-	-	181.0	209.6	228.6	
inch	12	12	-	-	-	-	-	6 1/8	7 1/8	7 3/8	8 1/8	-	-	-	8	10 1/4	11	
mm	304.8	304.8	-	-	-	-	-	154.0	179.4	198.4	217.5	-	-	-	203.2	260.4	279.4	
inch	14	14	-	-	-	-	-	8 1/8	9 1/8	9 3/8	10 1/8	-	-	-	10	12 1/4	13	
mm	355.6	355.6	-	-	-	-	-	204.8	230.2	249.2	268.3	-	-	-	254.0	311.2	330.2	
inch	16	16	5	-	-	-	-	10 1/8	11 1/8	11 3/8	12 1/8	-	-	-	12	14 1/4	15	
mm	406.4	406.4	127.0	-	-	-	-	255.6	281.0	300.0	319.1	-	-	-	304.8	362.0	381.0	
inch	18	18	5	-	-	-	-	9 7/8	12 1/8	13 1/8	13 3/8	14 1/8	-	-	-	14	16 1/4	17
mm	457.2	457.2	127.0	-	-	-	-	242.9	306.4	331.8	350.8	369.9	-	-	-	355.6	412.8	431.8
inch	20	20	5	7 1/2	-	-	-	11 1/8	14 1/8	15 1/8	15 3/8	16 1/8	-	-	-	16	18 1/4	19
mm	508.0	508.0	127.0	190.5	-	-	-	293.7	357.2	382.6	401.6	420.7	-	-	-	406.4	463.6	482.6
inch	22	22	5	7 1/2	-	-	-	13 1/8	16 1/8	17 1/8	17 3/8	18 1/8	-	-	-	18	20 1/4	21
mm	558.8	558.8	127.0	190.5	-	-	-	344.5	408.0	433.4	452.4	471.5	-	-	-	457.2	514.4	533.4
inch	24	24	5	7 1/2	-	-	-	15 1/8	18 1/8	19 1/8	19 3/8	20 1/8	-	-	-	20	22 1/4	23
mm	609.6	609.6	127.0	190.5	-	-	-	395.3	458.8	484.2	503.2	522.3	-	-	-	508.0	565.2	584.2
inch	26	26	5	7 1/2	-	-	-	17 1/8	20 1/8	21 1/8	21 3/8	22 1/8	-	-	-	22	24 1/4	25
mm	660.4	660.4	127.0	190.5	-	-	-	446.1	509.6	535.0	554.0	573.1	-	-	-	558.8	616.0	635.0
inch	28	28	5	7 1/2	-	-	-	19 1/8	22 1/8	23 1/8	23 3/8	24 1/8	-	-	-	24	26 1/4	27
mm	711.2	711.2	127.0	190.5	-	-	-	496.9	560.4	585.8	604.8	623.9	-	-	-	609.6	666.8	685.8
inch	30	30	5	7 1/2	14 1/2	-	-	21 1/8	24 1/8	25 1/8	25 3/8	26 1/8	9 1/4	-	19 3/4	26	28 1/4	29
mm	762.0	762.0	127.0	190.5	368.3	-	-	547.7	611.2	636.6	655.6	674.7	235.0	-	501.7	660.4	717.6	736.6
inch	32	32	5	7 1/2	14 1/2	-	-	23 1/8	26 1/8	27 1/8	27 3/8	28 1/8	9 1/4	15 1/2	21 3/4	28	30 1/4	31
mm	812.8	812.8	127.0	190.5	368.3	-	-	598.5	662.0	687.4	706.4	725.5	235.0	393.7	552.5	711.2	768.4	787.4
inch	34	34	5	7 1/2	14 1/2	18 1/2	-	25 1/8	28 1/8	29 1/8	29 3/8	30 1/8	9 1/4	16 1/2	23 3/4	30	32 1/4	33
mm	863.6	863.6	127.0	190.5	368.3	469.9	-	649.3	712.8	738.2	757.2	776.3	235.0	419.1	603.3	762.0	819.2	838.2
inch	36	36	5	7 1/2	14 1/2	20 1/2	-	27 1/8	30 1/8	31 1/8	31 3/8	32 1/8	9 1/4	17 1/2	25 3/4	32	34 1/4	35
mm	914.4	914.4	127.0	190.5	368.3	520.7	-	700.1	763.6	789.0	808.0	827.1	235.0	444.5	654.1	812.8	870.0	889
inch	40	40	5	7 1/2	14 1/2	24 1/2	-	31 1/8	34 1/8	35 1/8	35 3/8	36 1/8	9 1/4	19 1/2	29 3/4	36	38 1/4	39
mm	1016.0	1016.0	127.0	190.5	368.3	622.3	-	801.7	865.2	890.6	909.6	928.7	235.0	495.3	755.7	914.4	971.6	990.6
inch	42	42	5	7 1/2	14 1/2	28 1/2	-	33 1/8	36 1/8	37 1/8	37 3/8	38 1/8	9 1/4	21 1/2	31 3/4	38	40 1/4	41
mm	1066.8	1066.8	127.0	190.5	368.3	723.9	-	852.5	916.0	941.4	960.4	979.5	235.0	546.1	806.5	965.2	1022.4	1041.4
inch	44	44	5	7 1/2	14 1/2	28 1/2	-	35 1/8	38 1/8	39 1/8	39 3/8	40 1/8	9 1/4	21 1/2	33 3/4	40	42 1/4	43
mm	1117.6	1117.6	127.0	190.5	368.3	723.9	-	903.3	966.8	992.2	1011.2	1030.3	235.0	546.1	857.3	1016	1073.2	1092.2
inch	48	48	5	7 1/2	14 1/2	30 1/8	-	39 1/8	42 1/8	43 1/8	43 3/8	44 1/8	16	-	31	44	46 1/4	47
mm	1219.2	1219.2	127.0	190.5	368.3	763.6	-	1004.9	1068.4	1093.8	1112.8	1131.9	406.4	-	787.4	1117.6	1174.8	1193.8

\*NOTE: 10" drawer member does not have a hole at 2 1/2"



NOTE: Unless otherwise specified dimensions are in inches  
TOLERANCES: Fractions: Inch  $\pm 1/64$ "  
Decimals: .xx  $\pm .010$  over 18"  $\pm .030$   
.xxx  $\pm .005$  over 18"  $\pm .010$  over 30"  $\pm .015$   
Angles:  $\pm 1^\circ$  C sk  $\pm .010$  - .005

## Our service goes beyond...



Since 1969, Canimex has built its reputation in North America as representative for major international manufacturers of mechanical components. We are proud of our partnership with world leaders such as: COMER, SOM, SIMOL, ABBA...

Since our customers are our first priority, our main objective is to ensure their entire satisfaction. Want to innovate? You can count on the reliability and efficiency of our team of experts.

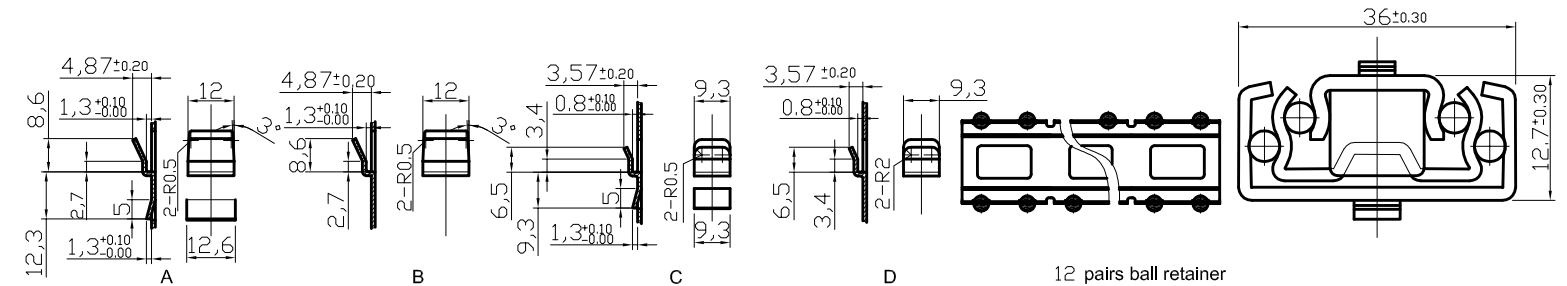
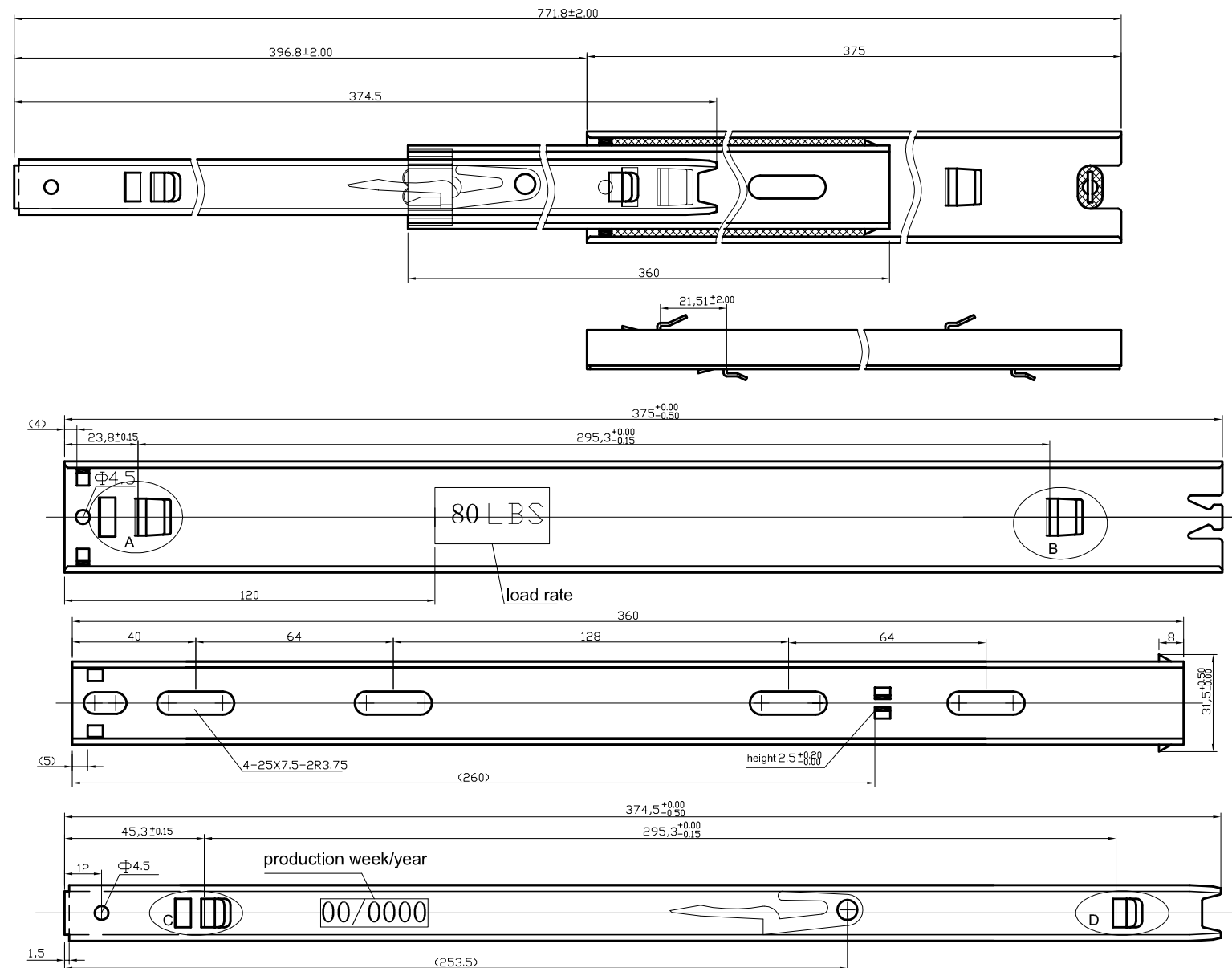
Always at your service!



Tel.: (819) 477.1335 • Fax: (819) 477.7212

Email: [mec@canimex.com](mailto:mec@canimex.com)

285, St-Georges, Drummondville (Québec) Canada J2C 4H3



**APPROBATION / APPROVAL**  
 CIE/CO.: \_\_\_\_\_  
 SIGN.: \_\_\_\_\_  
 DATE: \_\_\_\_\_

- NOTES:
- 1) PRODUCTION DATE AND LOAD RATING STAMPED AS SPECIFIED ON DRAWING.
  - 2) 35KG FACTORY LOAD RATING.
  - 3) PULL FORCE FOR ONE SLIDE IS 1.1Lbs TO 3.3Lbs.  $\triangle 3$
  - 4) ALL DIMENSIONS ARE IN MILLIMETERS.
  - 5) FULL SIZE STOPPER ON PLASTIC GUIDE.  $\triangle 2$
  - 6) MOBIL GREASE MP WITH LOW FRICTION.  $\triangle 3$
  - 7) SLIDE MUST MEET THE REQUIREMENTS FOR ANSI/BIFMA X5.5 LIFETIME OF 50000 OPERATION CYCLES MINIMUM IS REQUESTED  $\triangle 2$

REF.: V-5974 (3618)  
 FOR CUSTOMER'S USE ONLY

$\triangle 3$	15/05/28	PULL FORCE HAS CHANGED, GREASE SPECS ADDED.	J.A. T.G.
$\triangle 2$	13/05/10	REQUIREMENTS NOTE ADDED.	J.A. M.L.
$\triangle 1$	09/11/16	GAP OF INNER WAS 1.3 NOW IS 0.8mm	J.A. F.L.

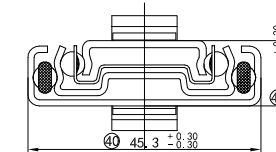
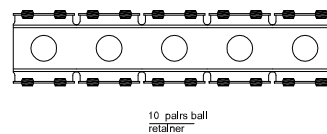
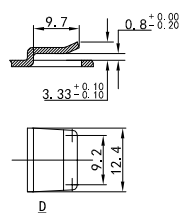
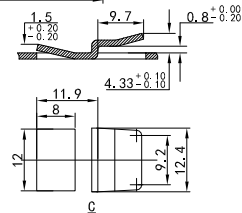
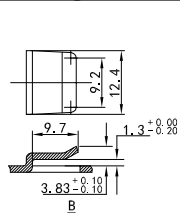
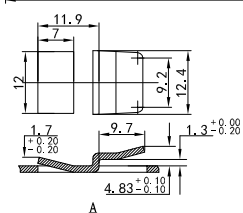
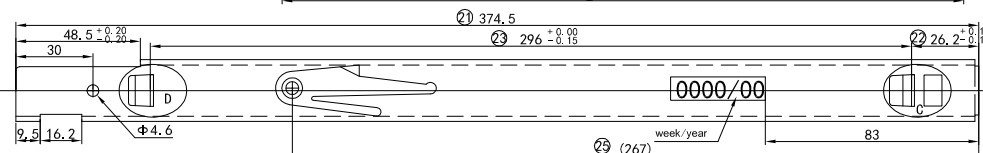
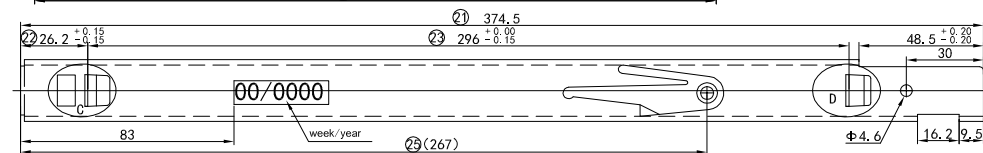
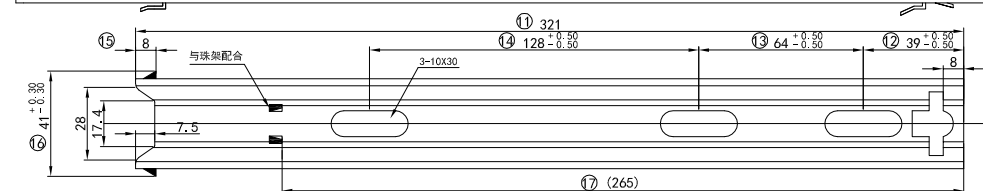
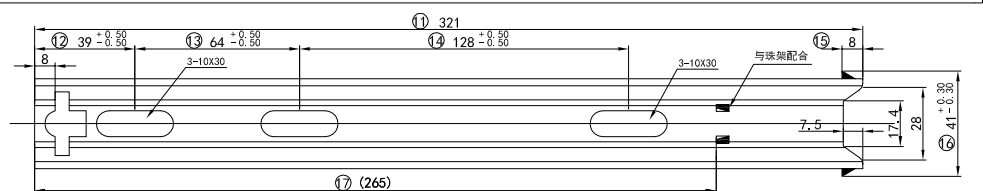
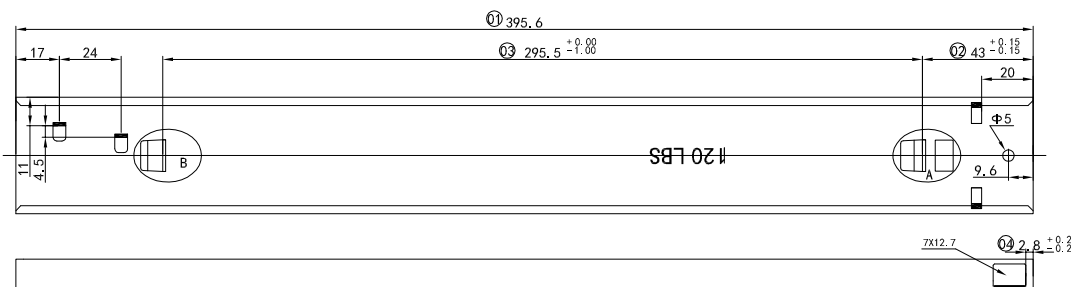
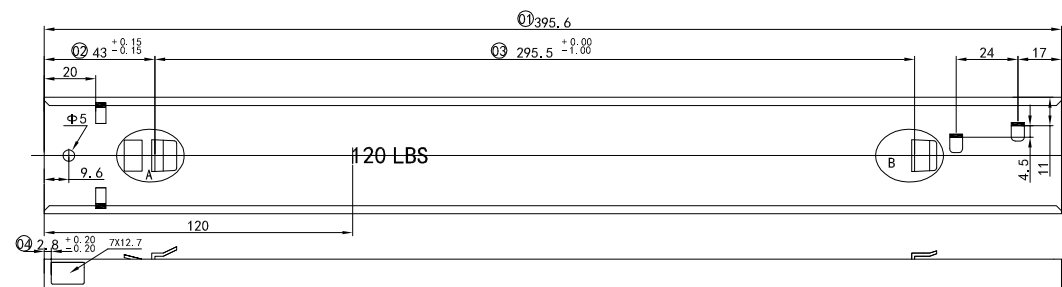
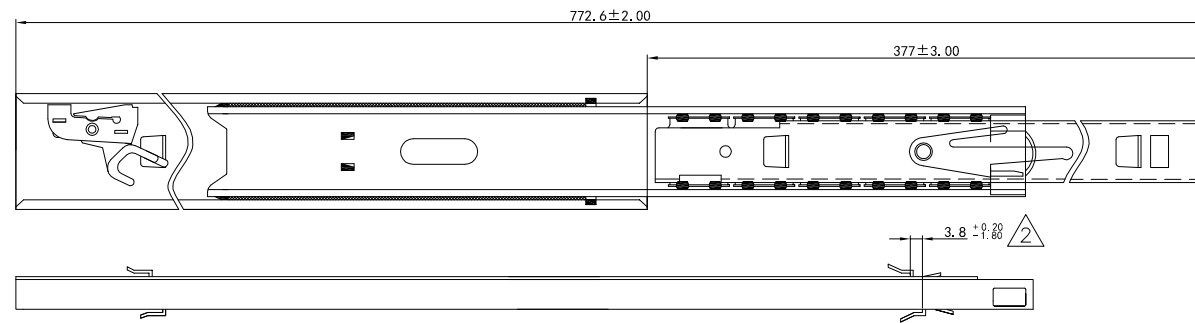
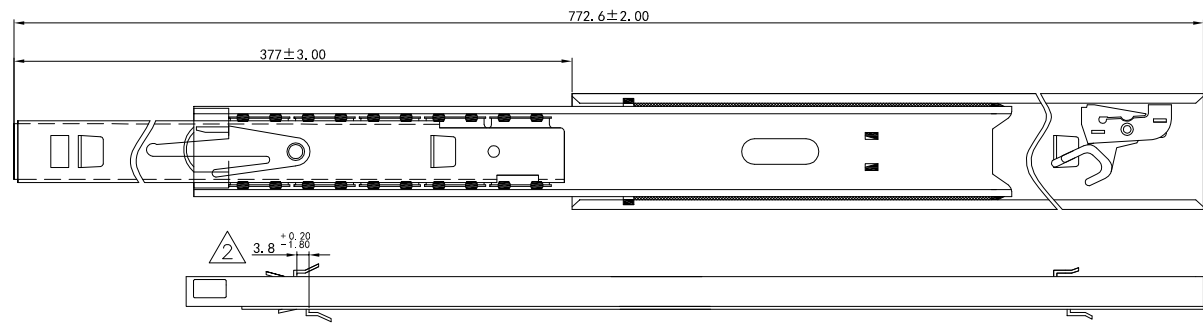
**CANIMEX**  
 DRUMMONDVILLE, QUEBEC, CANADA  
 TEL: (819) 477-1335  
 FAX: (819) 477-0306

ARTICLE CODE: **187339**  
 DRAWN BY: **J.A.** CHECK BY: \_\_\_\_\_ APP. BY: **F.L.**

TITLE BS3R-35KG-15(SET)				
MATERIAL Q195		FINISH ZINC PLATED		
SCALE N.T.S.	DWG # P-19861	REV. 3	PAGE 2/2	
DATE: 2008/11/17				

**CONFIDENTIAL:** THIS DRAWING AND/OR THE INFORMATION CONTAINED HEREIN IS AND REMAINS THE SOLE PROPERTY OF, AND IS PROPRIETARY TO, CANIMEX INC. THIS DRAWING AND/OR INFORMATION SHALL BE KEPT CONFIDENTIAL AND MAY NOT BE REPRODUCED, COPIED, MODIFIED, DISCLOSED, TRANSFERRED, OR MADE AVAILABLE TO OTHERS, EXCEPT WITH THE EXPRESS WRITTEN CONSENT OF CANIMEX INC. IT IS LOANED IN CONFIDENCE FOR MUTUAL ASSISTANCE PURPOSES ONLY. CANIMEX INC. MAY AT ANY TIME, MODIFY THE DRAWING AND/OR INFORMATION CONTAINED HEREIN.





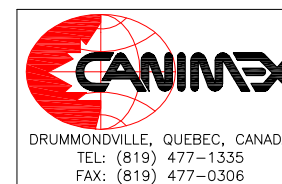
NOTES:

- 1) PRODUCTION DATE AND LOAD RATING STAMPED AS SPECIFIED ON DRAWING.
  - 2) 55KG FACTORY LOAD RATING.
  - 3) PULL FORCE FOR ONE SLIDE IS 2.3 LBS TO 4.3 LBS.
  - 4) MOBIL GREASE MP WITH LOW FRICTION.
  - 5) SLIDE MUST MEET THE REQUIREMENTS FOR ANSI/BIFMA X5.5 LIFETIME OF 50000 OPERATION CYCLES MINIMUM IS REQUIRED.
  - 6) ALL DIMENSIONS ARE IN MILLIMETERS.
- REF.: V-6643 (3621)



**APPROBATION / APPROVAL**

CIE/CO.: \_\_\_\_\_  
 SIGN.: \_\_\_\_\_  
 DATE: \_\_\_\_\_



TITLE  
 BS3R-65KG-15(AUTOCLOSE-C2)(SET)

MATERIAL: Q195  
 FINISH: ZINC PLATED

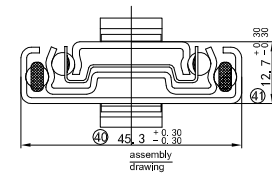
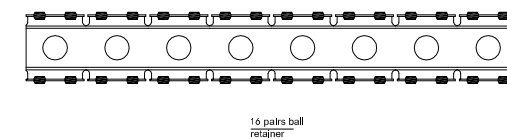
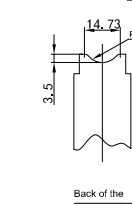
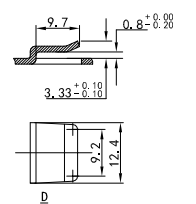
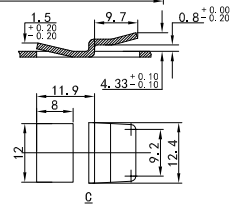
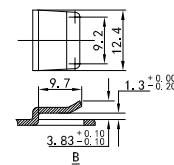
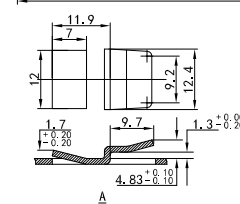
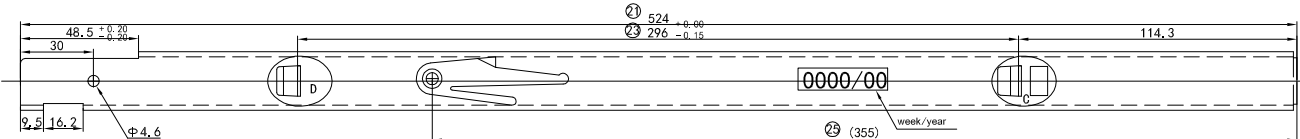
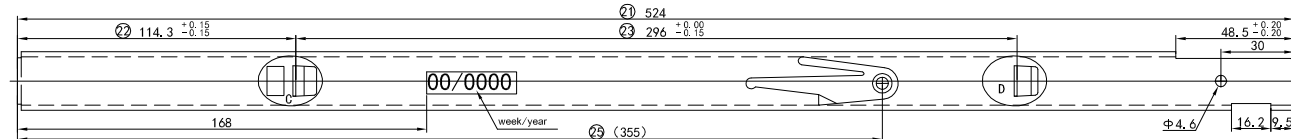
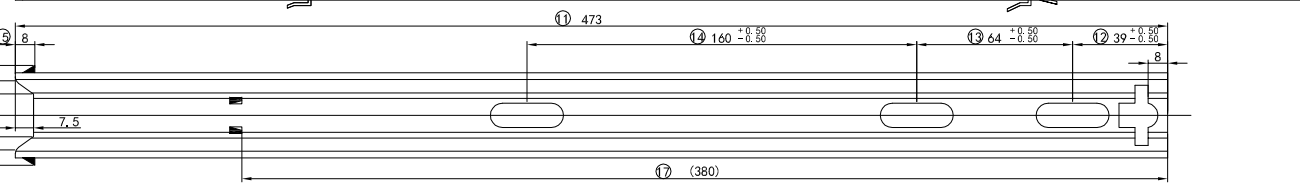
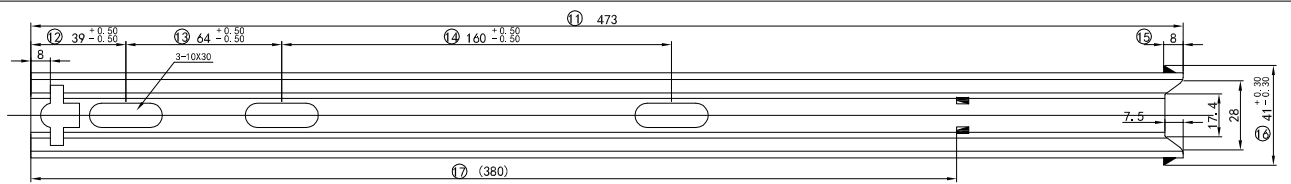
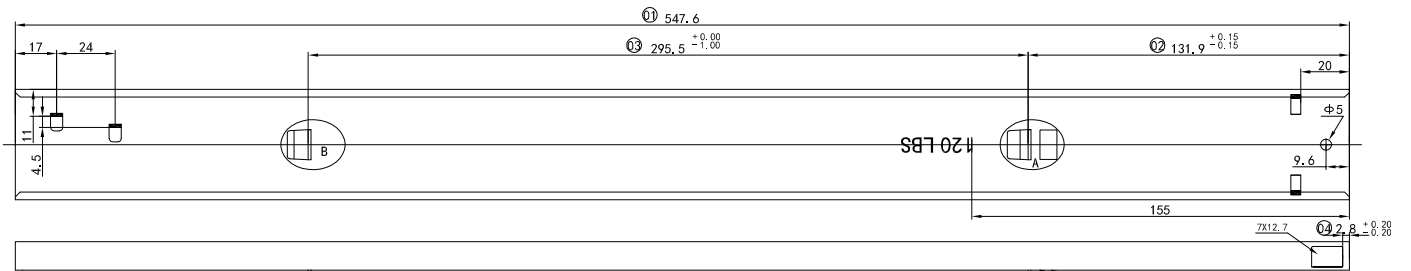
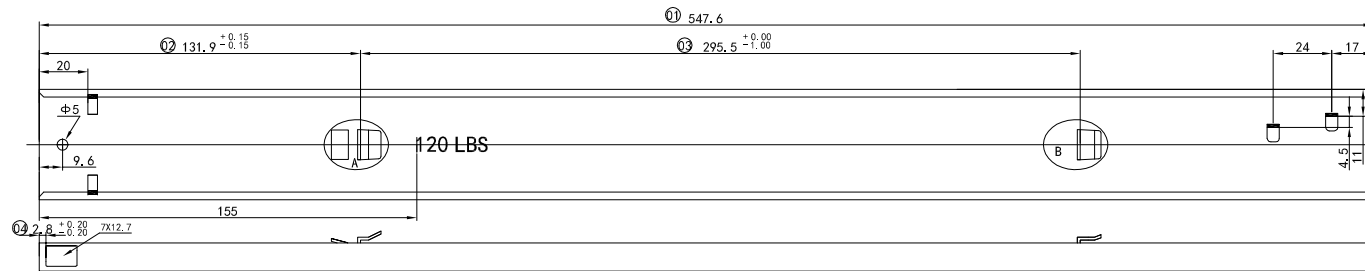
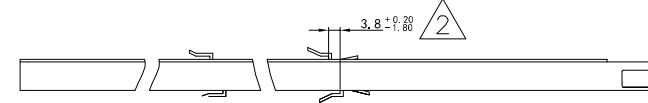
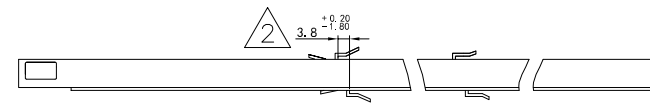
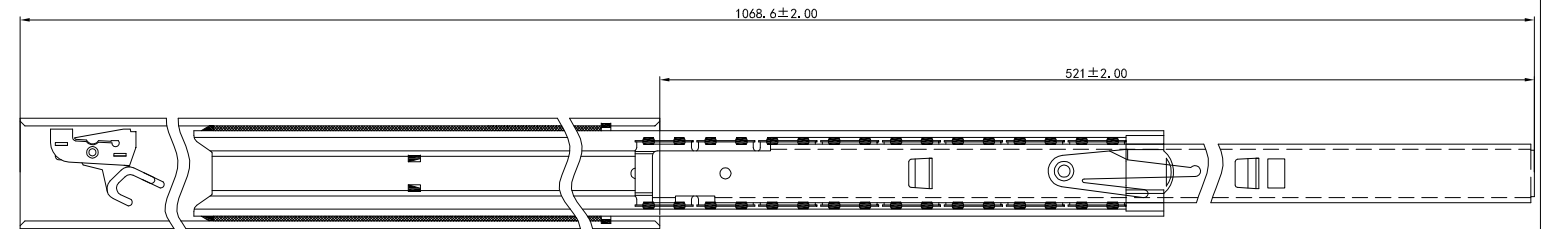
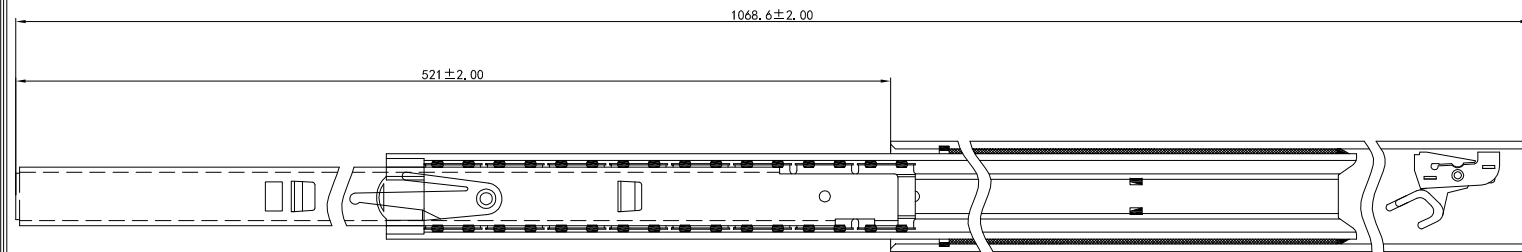
2	15/10/13	TOLERANCES CHANGED,	A.CL	ARTICLE CODE: 212374
1	15/05/27	GREASE SPECIFICATIONS ADDED, TOLERANCES CHANGED.	T.G.	J.A.

SCALE: N.T.S.	DWG #: P-27059	REV.: 2	PAGE: 2/2
---------------	----------------	---------	-----------

CONFIDENTIAL: THIS DRAWING AND/OR THE INFORMATION CONTAINED HEREIN IS AND REMAINS THE SOLE PROPERTY OF, AND IS PROPRIETARY TO, CANIMEX INC. THIS DRAWING AND/OR INFORMATION SHALL BE KEPT CONFIDENTIAL AND MAY NOT BE REPRODUCED, COPIED, MODIFIED, DISCLOSED, TRANSFERRED, OR MADE AVAILABLE TO OTHERS, EXCEPT WITH THE EXPRESS WRITTEN CONSENT OF CANIMEX INC. IT IS LOANED IN CONFIDENCE FOR MUTUAL ASSISTANCE PURPOSES ONLY. CANIMEX INC. MAY AT ANY TIME, MODIFY THE DRAWING AND/OR INFORMATION CONTAINED HEREIN.

FOR CUSTOMER'S USE ONLY

DESIGNS \ P-27059-R2



NOTES:

- 1) PRODUCTION DATE AND LOAD RATING STAMPED AS SPECIFIED ON DRAWING.
- 2) 55KG FACTORY LOAD RATING.
- 3) PULL FORCE FOR ONE SLIDE IS 2.3 LBS TO 4.3 LBS.
- 4) MOBIL GREASE MP WITH LOW FRICTION.  $\triangle 1$
- 5) SLIDE MUST MEET THE REQUIREMENTS FOR ANSI/BIFMA X5.5 LIFETIME OF 50000 OPERATION CYCLES MINIMUM IS REQUIRED.
- 6) ALL DIMENSIONS ARE IN MILLIMETERS.

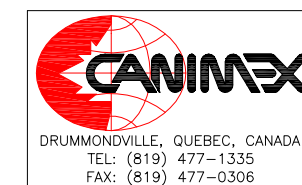
REF.: V-6642 (3625)

FOR CUSTOMER'S USE ONLY

**APPROBATION / APPROVAL**

CIE/CO.: \_\_\_\_\_  
 SIGN.: \_\_\_\_\_  
 DATE: \_\_\_\_\_

$\triangle 2$	15/10/13	CHANGE TOLERANCE	ACL
$\triangle 1$	15/05/27	GREASE SPECIFICATIONS ADDED	J.A.

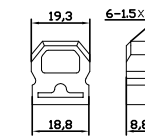
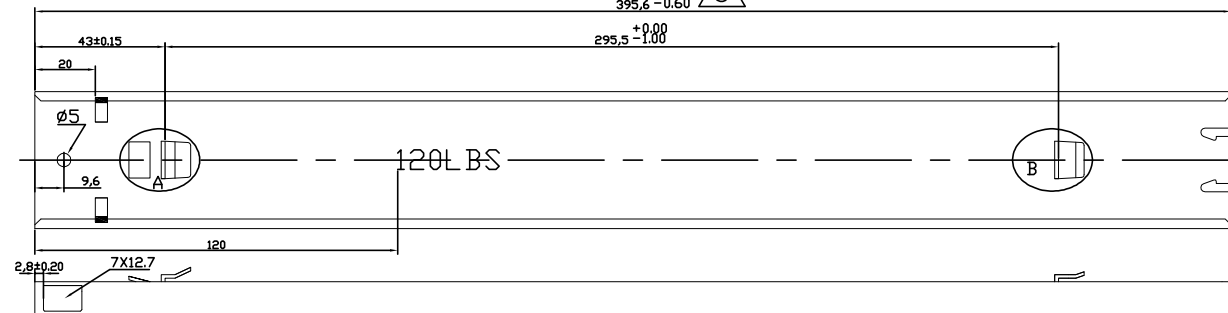
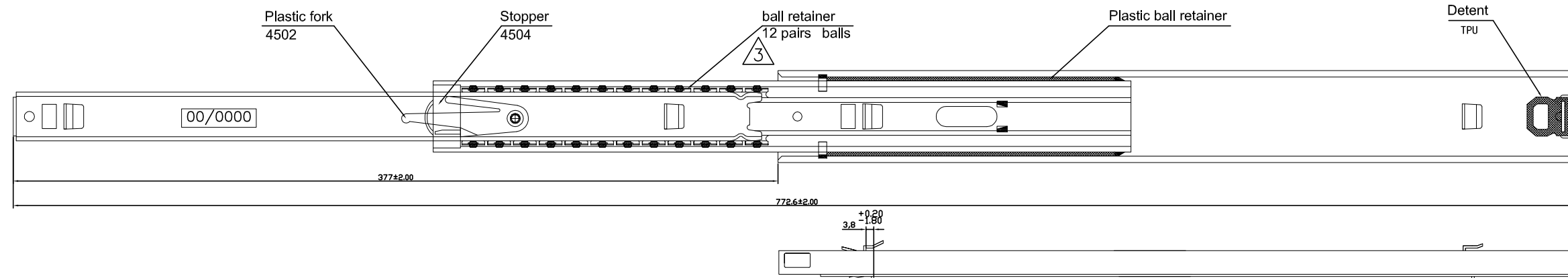


ARTICLE CODE: **212375**  
 DRAWN BY: **J.A.** CHECK BY: \_\_\_\_\_ APP. BY: **T.G.**

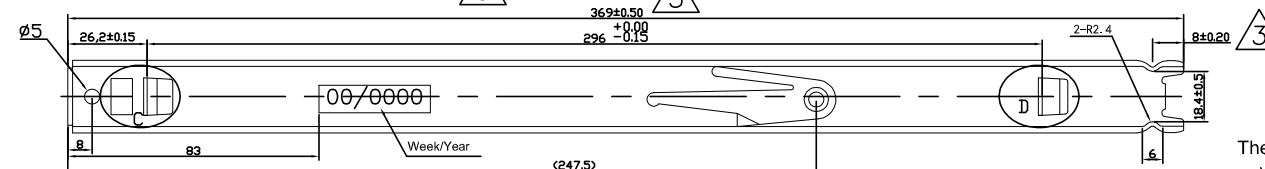
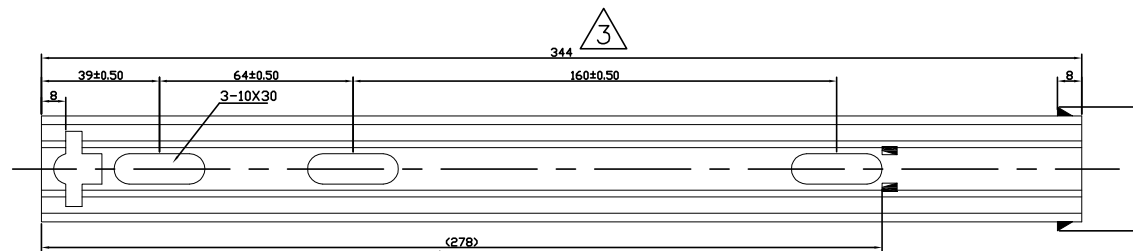
TITLE <b>BS3R-65KG-21(AUTOCLOSE-C2)(SET)</b>			
TOLERANCES (IF NOT SPECIFIED)		MATERIAL <b>Q195</b>	FINISH <b>ZINC PLATED</b>
DATE: 2015/02/09	SCALE <b>N.T.S.</b>	DWG # <b>P-27060</b>	REV. <b>2</b> PAGE <b>2/2</b>

**CONFIDENTIAL:** THIS DRAWING AND/OR THE INFORMATION CONTAINED HEREIN IS AND REMAINS THE SOLE PROPERTY OF, AND IS PROPRIETARY TO, CANIMEX INC. THIS DRAWING AND/OR INFORMATION SHALL BE KEPT CONFIDENTIAL AND MAY NOT BE REPRODUCED, COPIED, MODIFIED, DISCLOSED, TRANSFERRED, OR MADE AVAILABLE TO OTHERS, EXCEPT WITH THE EXPRESS WRITTEN CONSENT OF CANIMEX INC. IT IS LOANED IN CONFIDENCE FOR MUTUAL ASSISTANCE PURPOSES ONLY. CANIMEX INC. MAY AT ANY TIME, MODIFY THE DRAWING AND/OR INFORMATION CONTAINED HEREIN.

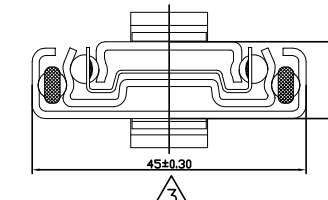
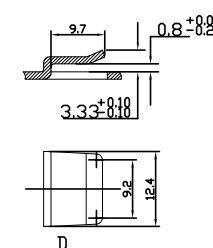
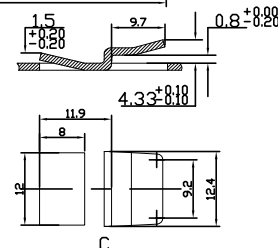
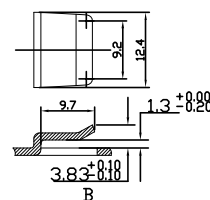
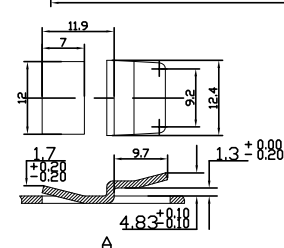




SEE DETAIL DRAWING  
P-27759-R3



The hooks on inner and outer rails will be verified by special tool for symmetry  $\leq 0.15$  versus centerline



**APPROBATION / APPROVAL**  
CIE/CO.: \_\_\_\_\_  
SIGN.: \_\_\_\_\_  
DATE: \_\_\_\_\_

- NOTES:
- 1) PRODUCTION DATE AND LOAD RATING STAMPED AS SPECIFIED ON DRAWING.
  - 2) PULL AND PUSH FORCE FOR ONE SLIDE IS 0.5Kg TO 1Kg
  - 3) 65KG FACTORY LOAD RATING.
  - 4) MOBIL GREASE MP WITH LOW FRICTION.
  - 5) SLIDE MUST MEET THE REQUIREMENTS FOR ANSI/BIFMA X5.5 LIFETIME OF 50000 OPERATION CYCLES MINIMUM IS REQUESTED

3	18/02/20	DIMENSIONS CHANGED	D.C. G.F.
NO.	DATE	REVISION	BY
CUSTOMER IS RESPONSIBLE TO ESTABLISH THAT THIS PRODUCT IS SUITABLE FOR THE INTENDED USAGE AND APPLICATION			

**CANIMEX**  
DRUMMONDVILLE, QUEBEC, CANADA  
TEL: (819) 477-1335  
FAX: (819) 477-0306

ARTICLE CODE: **213514**  
DRAWN BY: **J.A.** CHECK BY: APP. BY: **M.L.**

TITLE <b>BS3R-65KG-15(SET)-1</b>			
MATERIAL <b>Q195</b>		FINISH <b>ZINC PLATED</b>	
SCALE <b>N.T.S.</b>	DWG # <b>P-27758</b>	REV. <b>3</b>	PAGE <b>2/2</b>

**FOR CUSTOMER'S USE ONLY**

**CONFIDENTIAL:** THIS DRAWING AND/OR THE INFORMATION CONTAINED HEREIN IS AND REMAINS THE SOLE PROPERTY OF, AND IS PROPRIETARY TO, CANIMEX INC. THIS DRAWING AND/OR INFORMATION SHALL BE KEPT CONFIDENTIAL AND MAY NOT BE REPRODUCED, COPIED, MODIFIED, DISCLOSED, TRANSFERRED, OR MADE AVAILABLE TO OTHERS, EXCEPT WITH THE EXPRESS WRITTEN CONSENT OF CANIMEX INC. IT IS LOANED IN CONFIDENCE FOR MUTUAL ASSISTANCE PURPOSES ONLY. CANIMEX INC. MAY AT ANY TIME, MODIFY THE DRAWING AND/OR INFORMATION CONTAINED HEREIN.