



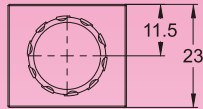
## DIMENSIONS

## MILLIMETERS(INCHES)

### MBW-01 Relief Valves(Modular Type)

MOUNTING SURFACE:MB\*-01-CETOP3  
ISO 03-NFPAD03

OPTION  
Design No: 30 (3090)

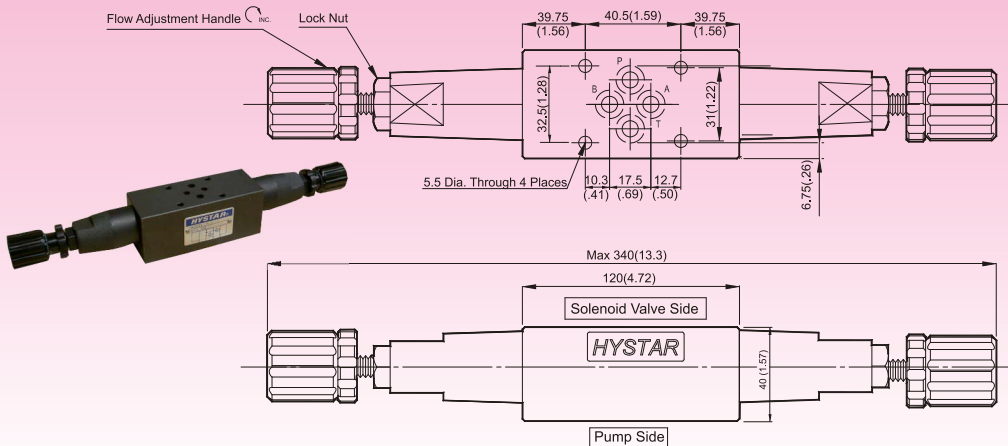


#### Valve Specifications & Attachment

Flow Rating	50 lpm (13.2 gpm)
Max. Pressure	250 bar (3600 psi)
Weight kg.(lbs.)	1.1 (2.4)
CODE:20	M5 X95LgX4pcs
CODE:2090	10-24UNCX4*LgX4pcs
Mounting Surface O-Ring P9 x 2 pc	



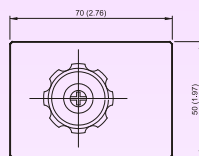
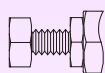
SYMBOL



### MBW-03 Relief Valves(Modular Type)

MOUNTING SURFACE:MB\*-03-CETOP5  
ISO 05-NFPAD05

OPTION  
Design No: 30 (3090)

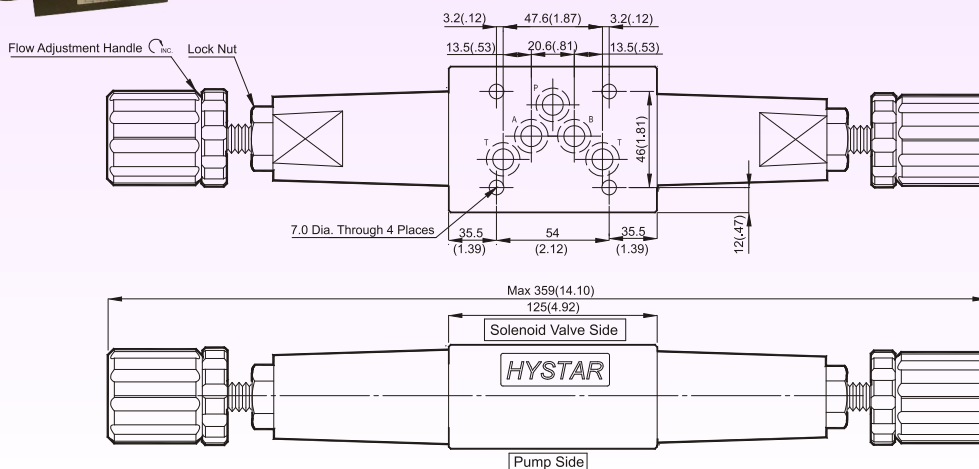


#### Valve Specifications & Attachment

Flow Rating	100 lpm (26.5 gpm)
Max. Pressure	250 bar (3600 psi)
Weight kg.(lbs.)	3.5 (7.7)
CODE:20	M6 X90LgX4pcs
CODE:2090	1/4-20UNCX3-1/2LgX4pcs
Mounting Surface O-Ring P12 x 5 pc	



SYMBOL

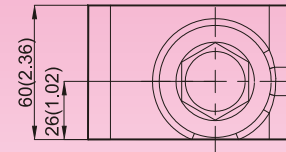
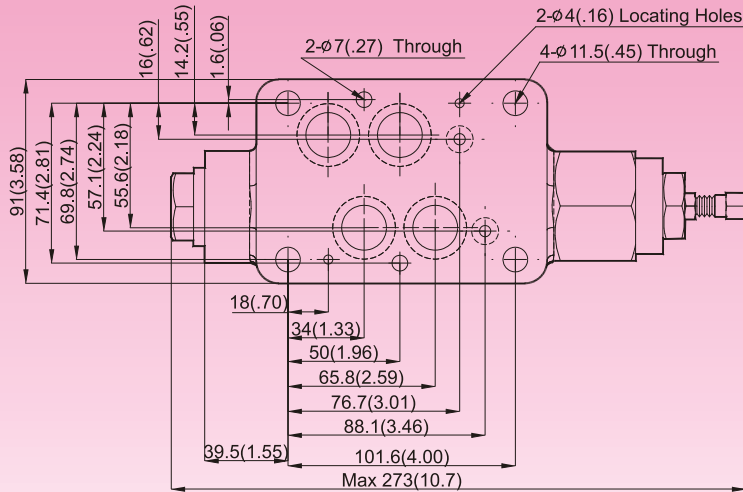


## DIMENSIONS

## MILLIMETERS(INCHES)

### MB\*-04 Relief Valves(Modular Type)

MOUNTING SURFACE:MB\*-04-CETOP7  
ISO 07-NFPAD07



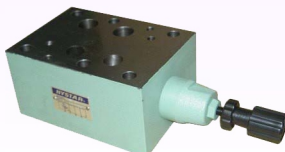
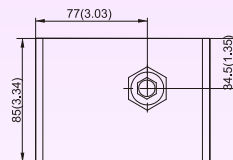
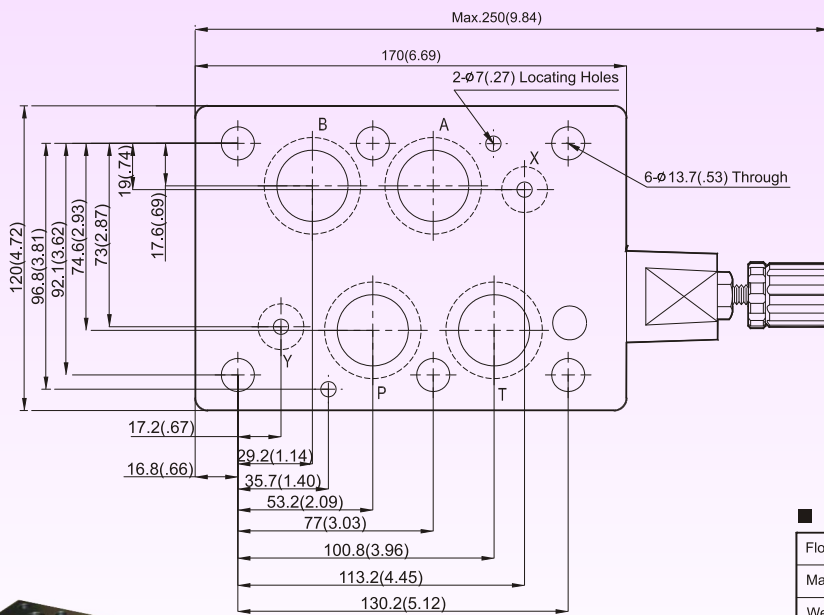
MBA-04  
MBB-04  
MBP-04

#### Valve Specifications & Attachment

Flow Rating	190 lpm (50.2 gpm)
Max. Pressure	250 bar (3600 psi)
Weight kg.(lbs.)	7.0 (15.4)
CODE:20	M6X125LgX2pcs M10X120LgX4pcs
CODE:2090	1/4-20UNCX4-7/8"LgX2pcs 3/8-16UNCX4-5/8"Lg X4pcs
Mounting Surface O-Ring P9 x 2 pc & P22A x 4 pcs	

### MB\*-06 Relief Valves(Modular Type)

MOUNTING SURFACE:MB\*-06-CETOP8  
ISO 08-NFPAD08



MBA-06  
MBB-06  
MBP-06

#### Valve Specifications & Attachment

Flow Rating	300 lpm (79.3 gpm)
Max. Pressure	250 bar (3600 psi)
Weight kg.(lbs.)	11.2 (24.6)
CODE:20	M12X140LgX6pcs
CODE:2090	1/2-13UNCX4-5/8"Lg X6pcs
Mounting Surface O-Ring P12 x 2 pc, P28 x 4 pcs	

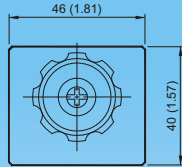
## DIMENSIONS

## MILLIMETERS(INCHES)

**MB\*-01**

### Relief Valves(Modular Type)

MOUNTING SURFACE:MB\*-01-CETOP3  
ISO 03-NFPAD03

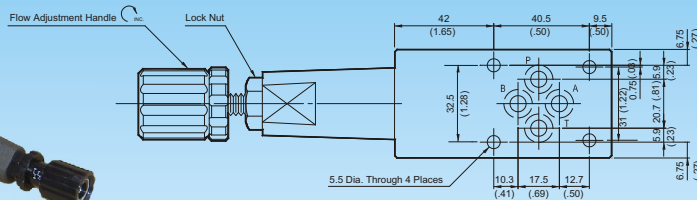


#### Valve Specifications & Attachment

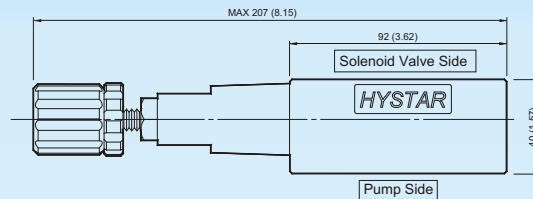
Flow Rating	50 lpm (13.2 gpm)
Max. Pressure	250 bar (3600 psi)
Weight kg/(lbs.)	1.1 (2.4)
CODE:20	M5 X85LgX4pcs
CODE:2090	10-24UNCX3-4/4"LgX4pcs
Mounting Surface O-Ring	P9 x 2 pc



SYMBOL



OPTION  
Design No: 30 (3090)

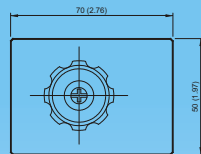
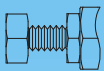


**MB\*-03**

### Relief Valves(Modular Type) (MBA-MBB-MBP-03)

MOUNTING SURFACE:MB\*-03-CETOP5  
ISO 05-NFPAD05

OPTION  
Design No: 30 (3090)

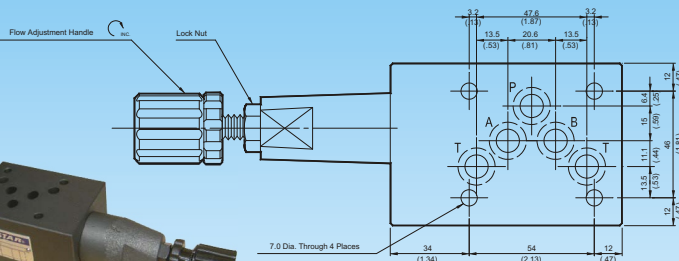
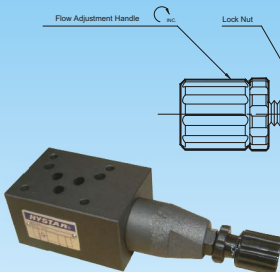


#### Valve Specifications & Attachment

Flow Rating	100 lpm (26.5 gpm)
Max. Pressure	250 bar (3600 psi)
Weight kg/(lbs.)	3.5 (7.7)
CODE:20	M6 X90LgX4pcs
CODE:2090	1/4-20UNCX3-1/2LgX4pcs
Mounting Surface O-Ring	P12 x 5 pc



SYMBOL



MB\*-03-L

