

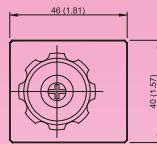
DIMENSIONS

MILLIMETERS(INCHES)

MR*-01

Reducing Valves(Modular Type)

MOUNTING SURFACE:MR*-01-CETOP3
ISO 03-NFPAD03

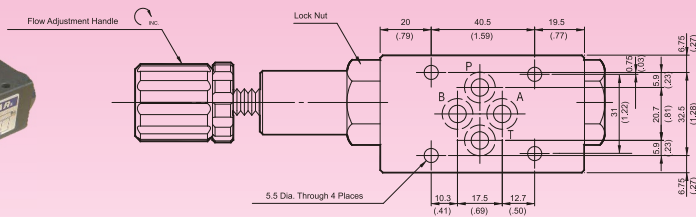


Valve Specifications & Attachment

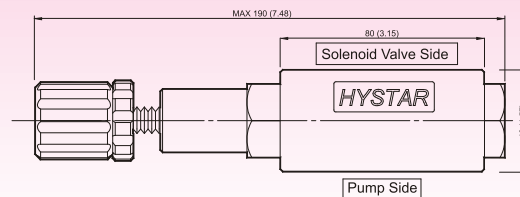
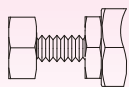
Flow Rating	50 lpm (13.2 gpm)
Max. Pressure	250 bar (3600 psi)
Weight kg.(lbs.)	1.1 (2.4)
CODE:20	M5 X85LgX4pcs
CODE:2090	10-24UNCX3-1/4"LgX4pcs
Mounting Surface O-Ring	P9 x 4 pc



SYMBOL



OPTION
Design No: 30 (3090)

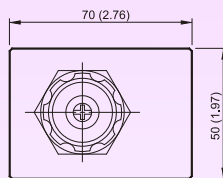
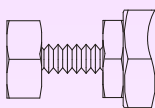


MR*-03

Reducing Valves(Modular Type)

MOUNTING SURFACE:MR*-03-CETOP5
ISO 05-NFPAD05

OPTION
Design No: 30 (3090)

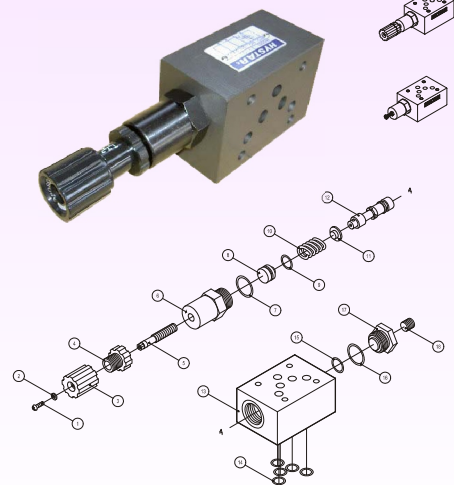
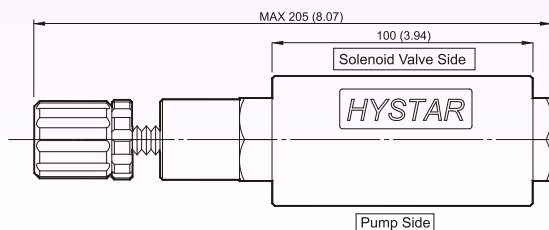
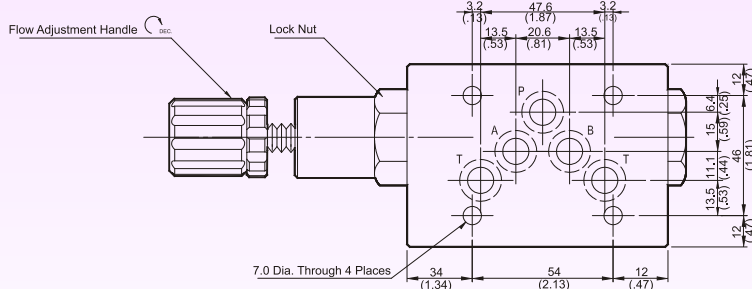


Valve Specifications & Attachment

Flow Rating	100 lpm (26.5 gpm)
Max. Pressure	250 bar (3600 psi)
Weight kg.(lbs.)	3.8 (8.4)
CODE:20	M6 X90LgX4pcs
CODE:2090	1/4-20UNCX3-1/2LgX4pcs
Mounting Surface O-Ring	P12 x 5 pc



SYMBOL



DIMENSIONS

MILLIMETERS(INCHES)

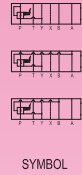
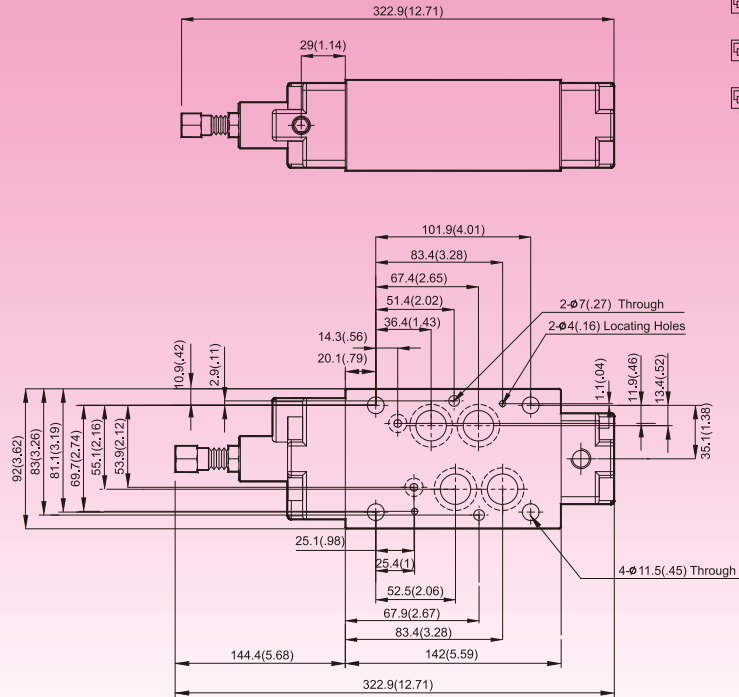
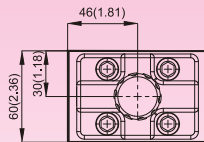
MR*-04

Reducing Valves(Modular Type)

MOUNTING SURFACE:MR*-04-CETOP7
ISO 07-NFPAD07

Valve Specifications & Attachment

Flow Rating	190 lpm (50.2 gpm)
Max. Pressure	250 bar (3600 psi)
Weight kg(lbs.)	7.0 (15.4)
CODE:20	M6X125LgX2pcs M10X120LgX4pcs
CODE:2090	1/4-20UNCX4-7/8"LgX2pcs 3/8-16UNCX4-5/8"Lg X4pcs
Mounting Surface O-Ring	P9 x 2 pc & P22A x 4 pcs

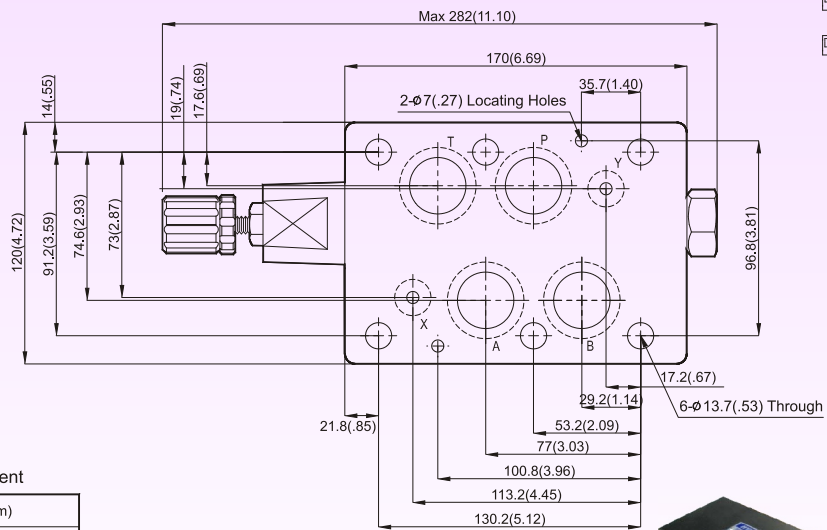
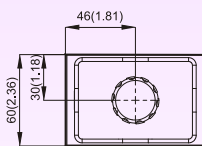


SYMBOL

MR*-06

Reducing Valves(Modular Type)

MOUNTING SURFACE:MR*-06-CETOP8
ISO 08-NFPAD08



SYMBOL

Valve Specifications & Attachment

Flow Rating	300 lpm (79.3 gpm)
Max. Pressure	250 bar (3600 psi)
Weight kg(lbs.)	11.2 (24.6)
CODE:20	M12X140LgX6pcs
CODE:2090	1/2-13UNCX4-5/8"Lg X6pcs
Mounting Surface O-Ring	P12 x 2 pc, P28 x 4 pcs

MRA-06
MRB-06
MRP-06

