



PUMPS

PUMPS

ALUMINUM GEAR PUMPS

- Highest volumetric and overall efficiency
- The most complete range of drive shafts
- Multiple units

POLARIS 10	Displacement in ³ /rev (cm ³ /rev)	Cont. pressure psi (bar)	Max. speed RPM
PLP10-1	0,07 (1,07)	3770 (260)	4000
PLP10-1,5	0,10 (1,60)	3770 (260)	4000
PLP10-2	0,13 (2,13)	3770 (260)	4000
PLP10-2,5	0,16 (2,67)	3770 (260)	4000
PLP10-3,15	0,20 (3,34)	3770 (260)	4000
PLP10-4	0,26 (4,27)	3625 (250)	4000
PLP10-5	0,33 (5,34)	3625 (250)	4000
PLP10-5,8	0,38 (6,20)	3335 (250)	3500
PLP10-6,3	0,41 (6,67)	3335 (230)	3500
PLP10-8	0,52 (8,51)	2610 (180)	3500
PLP10-10	0,65 (10,67)	2030 (140)	3500

PUMPS

ALUMINUM GEAR PUMPS

POLARIS 20	Displacement in ³ /rev (cm ³ /rev)	Cont. pressure psi (bar)	Max. speed RPM
PLP20-4	0,30 (9,95)	3625 (250)	4000
PLP20-6,3	0,40 (6,61)	3625 (250)	4000
PLP20-7,2	0,44 (7,29)	3625 (250)	4000
PLP20-8	0,50 (8,26)	3625 (250)	3500
PLP20-9	0,56 (9,17)	3625 (250)	3500
PLP20-10,5	0,66 (10,90)	3625 (250)	3500
PLP20-11,2	0,69 (11,23)	3625 (250)	3500
PLP20-14	0,89 (14,53)	3625 (250)	3500
PLP20-16	1,03 (16,85)	3625 (250)	3000
PLP20-19	1,16 (19,09)	2900 (200)	3000
PLP20-20	1,29 (21,14)	2900 (200)	3000
PLP20-24,5	1,52 (24,84)	2465 (170)	2500
PLP20-25	1,61 (24,62)	2465 (170)	2500
PLP20-27,8	1,72 (28,21)	1885 (130)	2000
PLP20-31,5	2,01 (33,03)	1885 (130)	2000



PUMPS

ALUMINUM GEAR PUMPS

POLARIS 30	Displacement in ³ /rev (cm ³ /rev)	Cont. pressure psi (bar)	Max. speed RPM
PLP30•22	1,34 (21,99)	3625 (250)	3000
PLP30•27	1,63 (26,70)	3625 (250)	3000
PLP30•34	2,11 (34,55)	3480 (240)	3000
PLP30•38	2,40 (39,27)	3480 (240)	3000
PLP30•43	2,68 (43,98)	3335 (230)	3000
PLP30•51	3,16 (51,83)	3045 (210)	2500
PLP30•61	3,74 (61,26)	2755 (190)	2500
PLP30•73	4,50 (73,82)	2465 (170)	2500
PLP30•82	4,98 (81,68)	2320 (160)	2200
PLP30•90	5,56 (91,10)	2175 (150)	2200

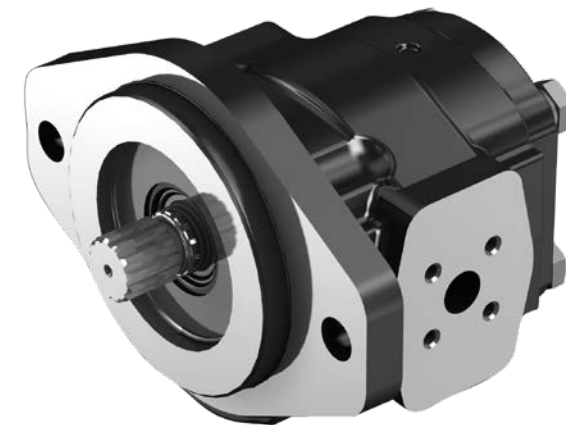


PUMPS

CAST IRON GEAR PUMPS

- Two or three-piece cast iron construction
- Wide range of drive shafts and mounting flanges
- Multiple units with common inlet
- 2-stage log-splitter pumps available

PHP 20	Displacement in ³ /rev (cm ³ /rev)	Cont. pressure psi (bar)	Max. speed RPM
PHP20•8	8,26 (0,50)	3625 (250)	3500
PHP20•11,2	11,23 (0,69)	3625 (250)	3500
PHP20•14	14,53 (0,89)	3625 (250)	3500
PHP20•16	16,85 (1,03)	3625 (250)	3500
PHP20•19	1,16 (19,09)	3625 (250)	3500
PHP20•20	1,29 (21,14)	3625 (250)	3500
PHP20•23	1,42 (23,32)	3625 (250)	3000
PHP20•24.5	1,52 (24,84)	3335 (230)	3000
PHP20•25	1,61 (26,42)	3335 (230)	3000
PHP20•27,8	1,72 (28,21)	2900 (200)	2500
PHP20•31,5	2,01 (33,03)	2900 (200)	2500



PUMPS

CAST IRON GEAR PUMPS

KAPPA compact 20	Displacement in ³ /rev (cm ³ /rev)	Cont. pressure psi (bar)	Max. speed RPM
KP20•4	0,30 (4,95)	4133 (285)	4000
KP20•6,3	0,40 (6,61)	4133 (285)	4000
KP20•8	0,50 (8,26)	4133 (285)	3500
KP20•11,2	0,69 (11,23)	3988 (275)	3500
KP20•14	0,89 (14,53)	3843 (265)	3500
KP20•16	1,03 (16,85)	3770 (260)	3000
KP20•20	1,29 (21,14)	3045 (210)	3000
KP20•25	1,61 (26,42)	2610 (180)	2500
KP20•31,5	2,01 (33,03)	2030 (140)	2000



PUMPS

CAST IRON GEAR PUMPS

KAPPA compact 30	Displacement in ³ /rev (cm ³ /rev)	Cont. pressure psi (bar)	Max. speed RPM
KP30•27	1,63 (26,70)	4060 (280)	3000
KP30•34	2,11 (34,56)	3770 (260)	3000
KP30•38	2,40 (39,27)	3770 (260)	3000
KP30•43	2,68 (43,98)	3625 (250)	3000
KP30•51	3,16 (51,83)	3335 (230)	2500
KP30•56	3,45 (56,54)	3118 (215)	2500
KP30•61	3,74 (61,26)	2900 (200)	2500
KP30•73	4,50 (73,82)	2610 (180)	2500



PUMPS

CAST IRON GEAR PUMPS

KAPPA compact 40	Displacement in ³ /rev (cm ³ /rev)	Cont. pressure psi (bar)	Max. speed RPM
KP40•63	3,75 (61,43)	4350 (300)	2800
KP40•73	4,43 (72,60)	4350 (300)	2800
KP40•87	5,28 (86,56)	4060 (280)	2800
KP40•109	6,64 (108,90)	3625 (250)	2800
KP40•121	7,43 (121,80)	3335 (230)	2500
KP40•133	8,18 (134,03)	3190 (220)	2500
KP40•151	9,20 (150,79)	2900 (200)	2500



PUMPS

CAST IRON GEAR PUMPS

2-stage pumps	Flow (USgpm) at 3600 RPM	Pressure (psi)		Threads	
		Low	High	in	out
HLGP10.6,3/2,1	8	400/900	3000	1" pipe	NPT 1/2"
HLGP10.6,3/3,0	8,5				
HLGP10.6,3/3,6	9				
HLGP10.8,8/2,1	10				
HLGP10.8,8/3,0	10,5				
HLGP10.8,8/3,6	11				
HLGP10.8,8/4,2	11,5				
HLGP10.10,9/2,1	12				
HLGP10.10,9/3,0	12,5				
HLGP10.10,9/3,6	13				
HLGP10.10,9/4,2	13,5	400/900	3000	NPT 1"	NPT 3/4"
HLGP10.13,0/3,0	15				
HLGP10.13,0/4,2	16				
HLGP20.15,2/7,6	22				
HLGP20.22,9/7,6	28				



PUMPS

PISTON PUMPS

- Energy saving system
- Minimum and maximum stroke displacement limiters
- Load-sensing, torque limiter or pressure-compensated control
- For mobile and industrial applications
- Multiple pump configuration available



PUMPS

INDUSTRIAL

LVP	Displacement in ³ /rev (cm ³ /rev)	Cont. pressure psi (bar)	Max. speed RPM
LVP30	1,75 (28,7)	4060 (280)	3000
LVP48	2,77 (45,4)	4060 (280)	2600
LVP75	4,49 (75,6)	4060 (280)	2600
LVP90	5,36 (87,90)	3625 (250)	2200



PV	Displacement in ³ /rev (cm ³ /rev)	Cont. pressure psi (bar)	Max. speed RPM
PV08	0,50 (8,0)	4000 (280)	2000
PV16	1,01 (16,5)	4000 (280)	2000
PV22	1,34 (22,2)	4000 (280)	2000
PV36	2,14 (36,0)	4000 (280)	2000
PV46	2,76 (46,0)	4000 (280)	2000
PV70	4,27 (70,0)	4000 (280)	1800
PV100	6,10 (100,0)	4000 (280)	1800



PUMPS

MOBILE

MVP	Displacement in ³ /rev (cm ³ /rev)	Cont. pressure psi (bar)	Max. speed RPM
MVP30.28	1,71 (28,0)	4060 (280)	3500
MVP30.34	2,12 (34,8)	3625 (250)	2900
MVP48.45	2,75 (45,0)	4060 (280)	3000
MVP48.53	3,28 (53,7)	3625 (250)	2500
MVP60.60	3,66 (60,0)	4060 (280)	3000
MVP60.72	4,39 (72,0)	4060 (280)	2700
MVP60.84	5,17 (84,7)	3625 (250)	2500



PUMPS

VARIABLE DISPLACEMENT VANE PUMPS

- Ideal for industrial applications
- Low noise level and long service life
- Compact design
- Maximum flow adjustment
- Tandem pump configuration available

Vane	Displacement in ³ /rev (cm ³ /rev)	Pressure psi (bar)	Max. speed RPM
PVF12	0,41 (6,7)	1015 (70)	1800
PVF20	0,68 (11,1)	1015 (70)	1800
PVF30	1,02 (16,7)	1015 (70)	1800
PVF40	1,34 (22,2)	1015 (70)	1800
VP5F-A	1,02 (16,7)	2030 (140)	1800
VP5F-B	1,34 (22,2)	2030 (140)	1800



PUMPS

HYDRAULIC HAND PUMPS

- Available with integrated relief
- 4-way control and shut-off valve
- Modular design
- Tank size from 1 to 10 liters

EP	Displacement in ³ /rev (cm ³ /rev)	Max. pressure psi (bar)
EP 12	0,73 (12)	4568 (315)
EP 25	1,53 (25)	3625 (250)
EP 45	2,75 (45)	3190 (220)



BECAUSE EVERY INDUSTRY AIMS FOR EXCELLENCE

