



MINI POWER PACKS

MPP SERIES

- Completely assembled at Canimex
- Compact size simplifies mounting in small spaces
- Flexible centreblock design for extending various circuits
- Low-amp and high-torque DC motors for 12/24VDC systems from 1 to 3 HP
- CSA approved AC motors from 1 to 3 HP
- Multiple displacement gear pumps
- Tried, tested and true



MPP SERIES

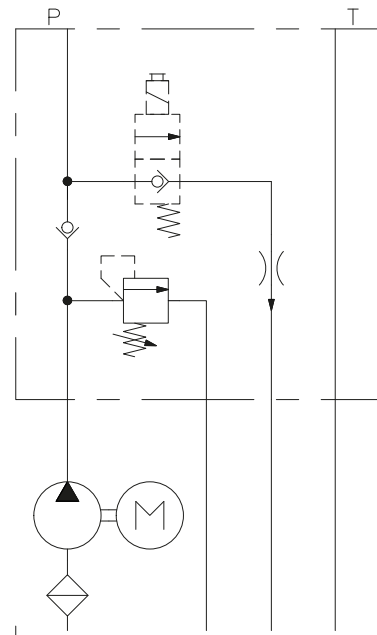
DC SINGLE-ACTING

Single-acting unit (power up/gravity down) powered by a 12VDC or a 24VDC motor

This unit combines an electrical cartridge valve with optional compensated flow control to maintain a constant return flow. Plastic tanks are used to create a compact design suitable for outside applications such as dump trailers.

Pump disp. cc/rev	Flow USgpm (lpm)						Press. relief psi (bar)
	Motor 1.6 kW-12 VDC			Motor 2.2 kW-24 VDC			
	1000 psi	2000 psi	2500 psi	1000 psi	2000 psi	2500 psi	
	70 bar	140 bar	170 bar	70 bar	140 bar	170 bar	
1,1	0,82 (3,1)	0,63 (2,4)	0,55 (2,1)	1,22 (4,6)	1,03 (3,9)	0,98 (3,7)	2900 (200)
1,6	1,27 (4,8)	0,96 (3,6)	0,85 (3,2)	1,66 (6,3)	1,32 (5,0)	1,22 (4,6)	
2,1	1,53 (5,8)	1,03 (3,9)	0,87 (3,3)	1,88 (7,1)	1,56 (5,9)	1,43 (5,4)	
2,3	1,61 (6,1)	1,08 (4,1)	0,92 (3,5)	2,09 (7,9)	1,66 (6,3)	1,53 (5,8)	
2,7	1,69 (6,4)	1,22 (4,6)	-	2,25 (8,5)	1,80 (6,8)	1,59 (6,0)	
3,2	1,80 (6,8)	1,37 (5,2)	-	2,48 (9,4)	1,88 (7,1)	1,69 (6,4)	
3,7	-	-	-	2,59 (9,8)	1,98 (7,5)	1,77 (6,7)	
4,2	-	-	-	2,64 (10)	2,06 (7,8)	1,82 (6,9)	

* Flows are approximative



MPP SERIES

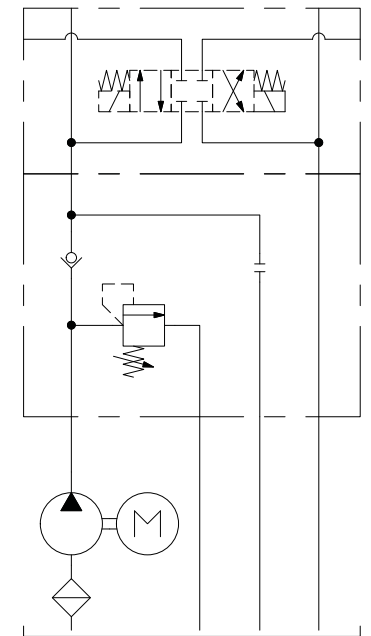
DC DOUBLE-ACTING

Double-acting unit (power up/power down) powered by a 12VDC or a 24VDC motor

This unit can be assembled with up to 3 directional and multiple modular valves. Plastic tanks are used to create a compact design suitable for outside applications.

Pump disp. cc/rev	Flow USgpm (lpm)						Press. relief psi (bar)
	Motor 1.6 kW-12 VDC			Motor 2.2 kW-24 VDC			
	1000 psi	2000 psi	2500 psi	1000 psi	2000 psi	2500 psi	
	70 bar	140 bar	170 bar	70 bar	140 bar	170 bar	
1,1	0,82 (3,1)	0,63 (2,4)	0,55 (2,1)	1,22 (4,6)	1,03 (3,9)	0,98 (3,7)	2900 (200)
1,6	1,27 (4,8)	0,96 (3,6)	0,85 (3,2)	1,66 (6,3)	1,32 (5,0)	1,22 (4,6)	
2,1	1,53 (5,8)	1,03 (3,9)	0,87 (3,3)	1,88 (7,1)	1,56 (5,9)	1,43 (5,4)	
2,3	1,61 (6,1)	1,08 (4,1)	0,92 (3,5)	2,09 (7,9)	1,66 (6,3)	1,53 (5,8)	
2,7	1,69 (6,4)	1,22 (4,6)	-	2,25 (8,5)	1,80 (6,8)	1,59 (6,0)	
3,2	1,80 (6,8)	1,37 (5,2)	-	2,48 (9,4)	1,88 (7,1)	1,69 (6,4)	
3,7	-	-	-	2,59 (9,8)	1,98 (7,5)	1,77 (6,7)	
4,2	-	-	-	2,64 (10)	2,06 (7,8)	1,82 (6,9)	

* Flows are approximative



MPP SERIES

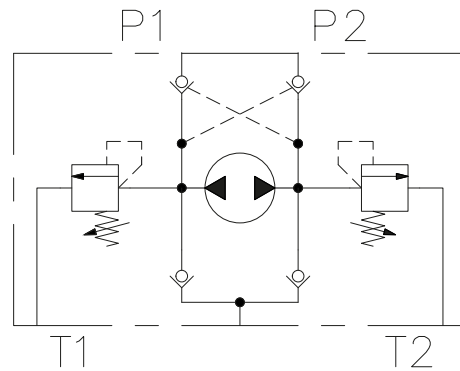
DC BIDIRECTIONAL

Bidirectional power unit powered by a 12VDC motor

The compact design of this unit eliminates the need for a directional valve. Ideal for smaller applications such as accessories on ATVs, small tractors or RVs. Single-acting unit is also available.

Pump disp. cc/rev	Flow USgpm (lpm)			Press. Relief psi (bar)
	Motor 0.8 kW-12 VDC			
	1000 psi	2000 psi	2500 psi	
	70 bar	140 bar	170 bar	
0,2	0,26 (1,0)	0,26 (1,0)	0,24 (0,9)	2900 (200)
0,3	0,32 (1,2)	0,29 (1,1)	0,26 (1,0)	
0,5	0,55 (2,1)	0,50 (1,9)	0,45 (1,7)	
0,7	0,79 (3,0)	0,66 (2,5)	0,58 (2,2)	
1,1**	1,00 (3,8)	0,77 (2,9)	0,71 (2,7)	

* Flows are approximative
 ** Only bidirectional pump



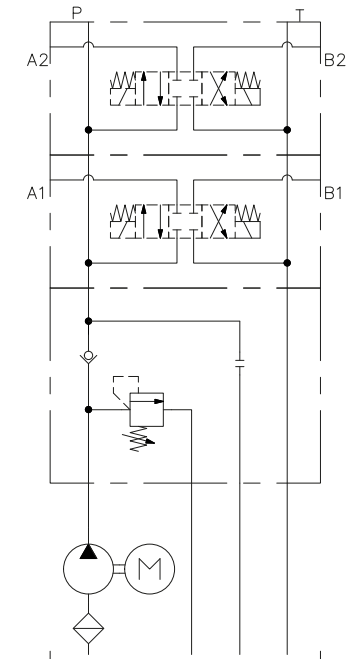
MPP SERIES

AC POWER UNIT

Single or double-acting unit powered by 1-phase 115/230 VAC or 3-phase 230/460 VAC motors

This unit can be assembled with up to 3 directional and multiple modular valves. Steel tanks are mainly used in industrial applications.

Pump disp. cc/rev	Motors @ 3450 RPM			
	Flow USgpm (lpm)	1 HP	2 HP	3 HP
		Pressure psi (bar)	Pressure psi (bar)	Pressure psi (bar)
1,1	1,00 (3,8)	1454 (100)	2900 (200)	2900 (200)
1,6	1,46 (5,5)	999 (69)	1998 (138)	2900 (200)
2,1	1,91 (7,2)	762 (53)	1522 (105)	2284 (157)
2,3	2,10 (7,9)	695 (48)	1390 (96)	2085 (144)
2,7	2,46 (9,3)	592 (41)	1184 (82)	1777 (122)
3,2	2,92 (11,1)	500 (35)	999 (69)	1499 (104)
3,7	3,37 (12,8)	-	864 (60)	1296 (89)
4,2	3,83 (14,5)	-	762 (53)	114 (79)
4,8	4,37 (16,5)	-	666 (46)	999 (69)
5,8	5,29 (20,0)	-	552 (38)	827 (57)



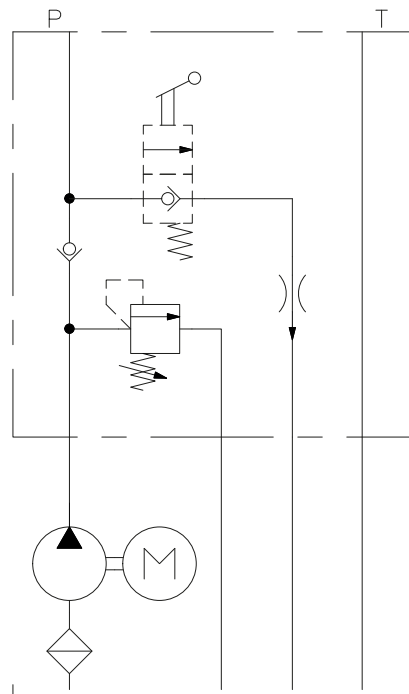
MPP SERIES

AC CAR HOIST

Designed for smaller low-rise auto hoists, this power unit is powered by a 2 HP/1-phase 230VAC electric motor.

A pushbutton on the motor starts the unit to raise the vehicle on the lift. To lower it, a manually operated cartridge release valve is used for fingertip control of the lowering speed. It also has an adjustable pressure-compensated flow control valve to regulate the lowering speed.

Pump disp. cc/rev	Motor @ 3450 RPM	
	Flow USgpm (lpm)	2 HP Pressure psi (bar)
1,6	1,46 (5,5)	1998 (138)



BECAUSE EVERY INDUSTRY AIMS FOR EXCELLENCE

