



ACCESSORIES

ACCESSORIES

HIGH PRESSURE BALL VALVE



- 2- and 3-way configurations
- Full passage for unrestricted flow
- Floating ball design for positive seal
- 1/4 turn positive operation
- Fixing holes available

Description	Type	Threads		Pressure psi (bar)
		NPT	SAE	
CRH2	2-way	1/4 to 1 1/2	4 to 24	7250 (500)
CRH2	2-way	1 1/4 to 2	-	5075 (350)
CRH3	3-way	3/8 to 1 1/4	4 to 24	7250 (500)

PUMP FLANGE



- SAE straight port connectors
- BSPP straight port connectors
- Split and closed flanges
- Complete with screws and seals

LIQUID FILLED PRESSURE GAUGE - PG



- Stainless steel case
- Available with 2 1/2" and 4" dial
- Glycerin or silicone filled
- Vacuum to 15 000 psi
- 1/4" NPT brass bottom or back connection
- PSI and BAR readings
- Different models available

ACCESSORIES

CLOGGING INDICATOR - PGF



- Used with our filter heads
- Coloured scale for easy reading
- NPT 1/8" threaded stem
- 1 1/2" and 2" face diameter
- For return or suction line

PRESSURE SWITCH - DN



- No drain line
- 1/4" NPT pressure connection
- With screw or graduated hand knob
- Unlimited mounting positions

ACCESSORIES

BH - PUMP/MOTOR MOUNTING ADAPTORS

- High-strength aluminum casting
- Lightweight
- Vertical or horizontal mounts
- Suitable for gas or electric motors

Description	Motor frame	SAE pump flange	Face-to-face (in)
BH-E1C-R8	56C to 145TC	4F17	3,5 ; 4,25 ; 4,40
BH-E1C-S0		SAE "AA" - 2 bolt	3,5 ; 4,25 ; 4,40
BH-E1C-S1		SAE "A" - 2 bolt	3,5 ; 4,25 ; 4,40
BH-V1C-S0		SAE "AA" - 2 bolt	5,12 ; 6,40
BH-V1C-S1		SAE "A" - 2 bolt	4,40 ; 5,12 ; 6,40
BH-E2C-R8	182TC to 256TC	4F17	5,0
BH-E2C-S0		SAE "AA" - 2 bolt	5,0
BH-E2C-S1		SAE "A" - 2 bolt	5,0 ; 5,81 ; 6,81
BH-E2C-S5		SAE "B" - 2 bolt	5,81 ; 6,81
BH-E2C-S7		SAE "C" - 2 bolt	5,81 ; 6,81
BH-V2C-S0		SAE "AA" - 2 bolt	5,12 ; 6,40
BH-V2C-S1		SAE "A" - 2 bolt	4,40 ; 5,12 ; 6,40
BH-E3C-S1	248TC to 286TSC	SAE "A" - 2 bolt	6,87 ; 7,87
BH-E3C-S3		SAE "B" - 2/4 bolt	6,87 ; 7,87
BH-E3C-S5		SAE "B" - 2 bolt	6,87
BH-E3C-S7		SAE "C" - 2 bolt	6,87 ; 7,87
BH-E4C-S3	324TC to 405TC	SAE "B" - 2/4 bolt	7,06 ; 8,75
BH-E4C-S8		SAE "C" - 2/4 bolt	7,06 ; 8,75
BH-E4C-D8		SAE "D" - 2/4 bolt	8,75
BH-G5H-R8	Ø = 1 5/8" BC = 3 5/8"	4F17	4,44
BH-G5H-S0		SAE "AA" - 2 bolt	4,44
BH-G5H-S1		SAE "A" - 2 bolt	4,69
BH-G9H-R8	Ø = 5 3/4" BC = 6 1/2"	4F17	5,625
BH-G9H-S0		SAE "AA" - 2 bolt	5,125 ; 5,625
BH-G9H-S1		SAE "A" - 2 bolt	5,125 ; 5,625 ; 6,00 ; 6,75 ; 7,75
BH-G9S-S1	Ø = 6-7/16 " BC = 6 1/2 "	SAE "A" - 2 bolt	6,75
BH-G9G-S1	Ø = 7" BC = 7 3/4 "	SAE "A" - 2 bolt	6,75 ; 7,75



248

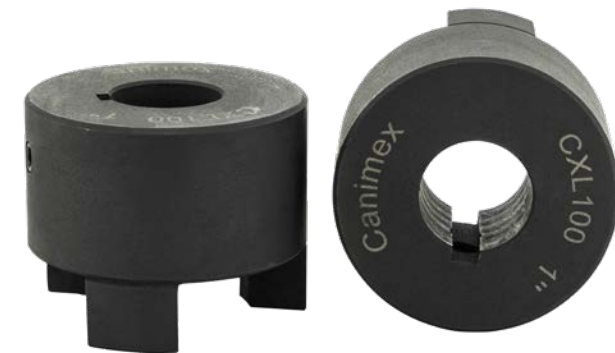
ACCESSORIES

CXL - JAW COUPLINGS

Series	HP		Bore (in)	
	1800 RPM	3600 RPM	Min.	Max.
CXL050	0,76	1,52	3/16"	5/8"
CXL070	1,24	2,48	3/16"	3/4"
CXL075	2,57	5,14	3/16"	1"
CXL090	4,10	8,20	3/16"	1-1/8"
CXL095	5,54	11,08	3/8"	1-1/8"
CXL099	9,08	18,16	1/2"	1-1/4"
CXL100	11,92	23,84	7/16"	1-3/8"
CXL110	22,63	45,26	1/2"	1-7/8"
CXL150	35,46	70,82	5/8"	1-7/8"
CXL190	49,36	98,72	5/8"	2-1/4"
CXL225	66,83	133,66	3/4"	2-5/8"

Type	Material	Power factor
N	NBR	1
U	Urethane	1,5
H	Hytrell	2,5

Recommended service factor			
Application	Electric motor	Gas engine	
		1 cyl.	2 cyl.
Gear pump	1,25	2,00	1,60



249