



**RD / RE / RC / ED / EE - BRIDES SAE ET EUROPÉENNES**

**RD / RE / RC / ED / EE - FLANGES SAE ET EUROPÉENNES**

***Hydraulic  
Electronic***

# | TABLE DES MATIÈRES - INDEX

Nomenclature	1	Ordering Code	1
Dimensions	3	Dimensions	3
Notes	11	Notes	11
Garantie	13	Warranty	13

## | RD / RE / SF / ED / EE

## INTRODUCTION

**Note :** Toutes les spécifications dans cette brochure se rapportent au produit standard en date d'aujourd'hui.  
Canimex se réserve le droit d'interrompre, de modifier ou de réviser les spécifications de cette brochure sans préavis.

**Note :** All specifications in this brochure refer to the standard product at this date.  
Canimex reserves the right to discontinue, modify or revise the specification shown in this brochure without notice.

**Attention :** Toutes les dimensions de cette brochure inscrites directement sur les dessins sont en millimètres et demeurent approximatives.  
Pour des applications où les dimensions sont critiques, contacter Canimex.

**Warning :** All dimensions in this brochure shown on drawings are in millimetres and are approximate dimensions.  
If your applications have space limitations, please contact Canimex.

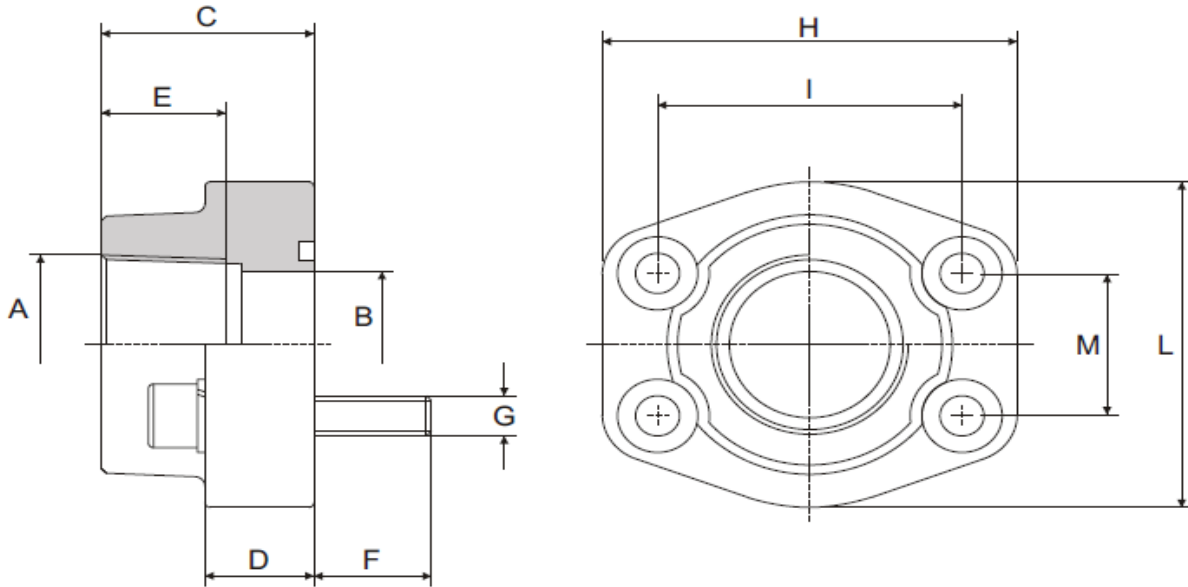
## NOMENCLATURE BRIDE SAE / SAE FLANGE ORDERING CODE

<b>R</b>	<b>D</b>	<b>2</b>	<b>-SE</b>	<b>/F</b>	<b>NH</b>	<b>-N</b>
Série Series	Type	Ensemble Kit	Montage SAE SAE mounting	Sortie Outlet	Filets Threads	Joints Seals
<b>R</b> (Bride standard/ Standard flange)  <b>S</b> (Demi-bride Standard/ Standard split flange)	<b>C</b> (Fermée/Closed)  <b>D</b> (Directe/Straight)  <b>E</b> (Coude 90°/ 90° Elbow)	<b>0</b> (Bride seulement /Flange only)  <b>2</b> (Avec vis, Rondelles et joints/ With screws, washers, o'ring)	<b>SA</b> (3000 psi, 1/2") <b>VA</b> (6000 psi, 1/2")	<b>F</b> (Femelle / Female)  <b>M</b> (Mâle / Male)	<b>ND</b> (1/2" NPT) <b>OC</b> (SAE10) <b>JB</b> (JIC8) <b>JC</b> (JIC10) <b>JD</b> (JIC12) <b>NE</b> (3/4" NPT) <b>OC</b> (SAE10) <b>OD</b> (SAE12) <b>JC</b> (JIC10) <b>JD</b> (JIC12) <b>JF</b> (JIC16) <b>NF</b> (1" NPT) <b>OD</b> (SAE12) <b>OF</b> (SAE16) <b>JD</b> (JIC12) <b>JF</b> (JIC16) <b>JG</b> (JIC20) <b>NG</b> (1-1/4" NPT) <b>OF</b> (SAE16) <b>OG</b> (SAE20) <b>JF</b> (JIC16) <b>JG</b> (JIC20) <b>JH</b> (JIC24) <b>NH</b> (1-1/2" NPT) <b>OG</b> (SAE20) <b>OH</b> (SAE24) <b>JG</b> (JIC20) <b>JH</b> (JIC24)	<b>N</b> (Buna) <b>V</b> (Viton)
			<b>SB</b> (3000 psi, 3/4") <b>VB</b> (6000 psi, 3/4")		<b>OC</b> (SAE10) <b>OD</b> (SAE12) <b>JC</b> (JIC10) <b>JD</b> (JIC12) <b>JF</b> (JIC16)	
			<b>SC</b> (3000 psi, 1") <b>VC</b> (6000 psi, 1")		<b>OF</b> (SAE16) <b>JD</b> (JIC12) <b>JF</b> (JIC16)	
			<b>SD</b> (3000 psi, 1-1/4") <b>VD</b> (6000 psi, 1-1/4")		<b>OG</b> (SAE20) <b>JF</b> (JIC16) <b>JG</b> (JIC20)	
			<b>SE</b> (3000 psi, 1-1/2") <b>VE</b> (6000 psi, 1-1/2")		<b>JH</b> (JIC24)	
			<b>SF</b> (3000 psi, 2") <b>VF</b> (6000 psi, 2")		<b>NL</b> (2" NPT)	
			<b>SG</b> (3000 psi, 2-1/2")		<b>NM</b> (2-1/2" NPT)	
			<b>SH</b> (3000 psi, 3")		<b>NN</b> (3" NPT)	
			<b>SI</b> (3000 psi, 3-1/2")		<b>NZ</b> (3-1/2" NPT)	
			<b>SJ</b> (3000 psi, 4")		<b>NO</b> (4" NPT)	
			<b>SK</b> (3000 psi, 5")		<b>NP</b> (5" NPT)	

## NOMENCLATURE BRIDE EUROPÉENNE / EUROPEAN FLANGE ORDERING CODE

<b>E</b>	<b>E</b>	<b>2</b>	<b>-EA</b>	<b>/F</b>	<b>GD</b>	<b>-N</b>
Série Series	Type	Ensemble Kit	Diamètre trou x cercle de localisation (mm) Size - hole diameter x bolt circle (mm)	Sortie Outlet	Filets Threads	Joints Seals
<b>E</b> (Européen/ European) <b>B</b> (Bosch)	<b>D</b> (Direct) <b>E</b> (Coude 90° 90° Elbow)	<b>0</b> (Bride seulement Flange only) <b>2</b> (Avec vis, rondelles et joints with screws, washers, o'ring)	<b>EA</b> (13X30)	<b>F</b> (Femelle / Female) <b>M</b> (Mâle / Male)	<b>GC</b> (BSPP 3/8")	<b>N</b> (Buna) <b>V</b> (Viton)
			<b>EB</b> (19X40)		<b>GD</b> (BSPP 1/2")	
			<b>ED</b> (27X51)		<b>GE</b> (BSPP 3/4")	
			<b>EF</b> (33X62)		<b>GF</b> (BSPP 1")	
			<b>EG</b> (38X72)		<b>GG</b> (BSPP 1-1/4")	
			<b>BB</b> (13X30)		<b>GC</b> (BSPP 3/8") <b>GD</b> (BSPP 1/2")	
			<b>BC</b> (15X35)		<b>GD</b> (BSPP 1/2")	
			<b>BE</b> (20X40)		<b>GE</b> (BSPP 3/4")	
			<b>BM</b> (27X55)		<b>GF</b> (BSPP 1")	

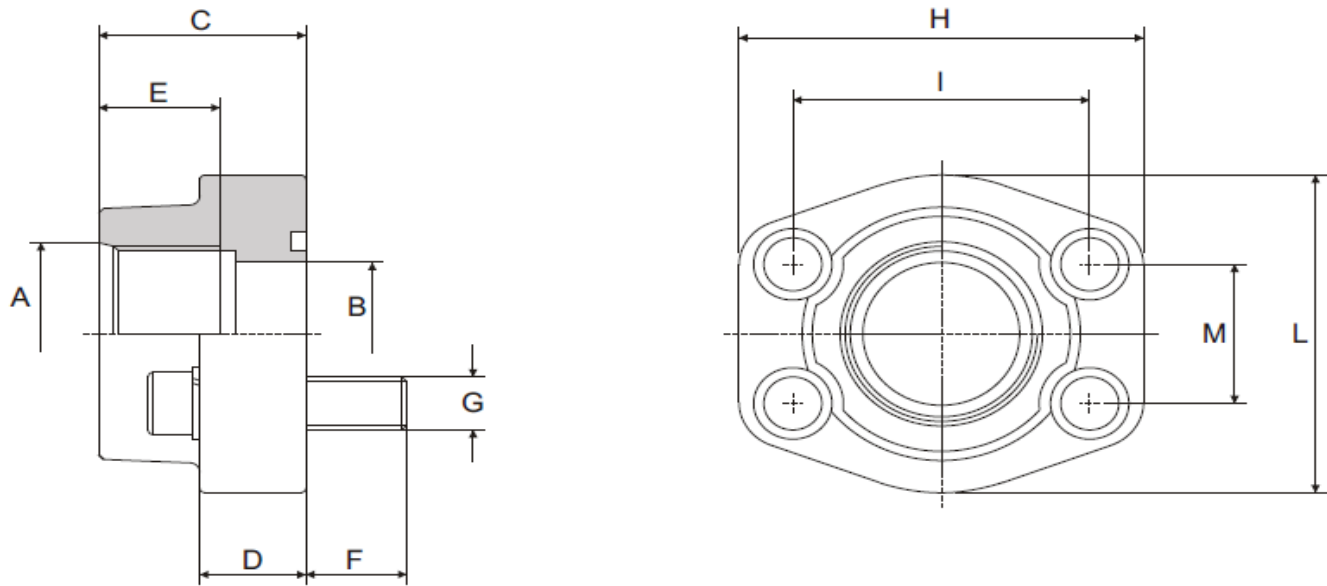
**RD2-S\*/FN\*; RD2-V\*/FN\***



Série Series	P <sub>max</sub> (bar)	Dimensions (mm/in)										
		A SAE	B	C	D	E	F	G (UNC)	H	I	L	M
RD2-S	348	1/2"	13.0/0.5	36.0/1.4	16.0/0.6	19.0/0.7	14.0/0.6	5/16"	57.0/2.2	38.0/1.5	47.0/1.9	17.5/0.7
	348	3/4"	19.0/0.7	36.0/1.4	18.0/0.7	19.0/0.7	16.0/0.6	3/8"	66.0/2.6	47.6/1.9	49.0/1.9	22.2/0.9
	348	1"	25.0/1.0	38.0/1.5	18.0/0.7	19.0/0.7	16.0/0.6	3/8"	71.0/2.8	52.4/2.1	53.0/2.1	26.2/1.0
	278	1-1/4"	31.0/1.2	41.0/1.6	21.0/0.8	22.0/0.9	18.0/0.7	7/16"	80.0/3.1	58.7/2.3	69.0/2.7	30.2/1.2
	210	1-1/2"	38.0/1.5	44.0/1.7	25.0/1.0	24.0/0.9	18.0/0.7	1/2"	94.0/3.7	69.9/2.8	77.0/3.0	35.7/1.4
	210	2"	50.0/2.0	45.0/1.8	25.0/1.0	26.0/1.0	18.0/0.7	1/2"	103.0/4.1	77.8/3.1	89.0/3.5	42.9/1.7
	175	2-1/2"	63.0/2.5	50.0/2.0	25.0/1.0	30.0/1.2	18.0/0.7	1/2"	115.0/4.5	89.0/3.5	101.0/4.0	50.8/2.0
	138	3"	73.0/2.9	50.0/2.0	27.0/1.1	34.0/1.3	25.0/1.0	5/8"	135.0/5.3	106.4/4.2	124.0/4.9	62.0/2.4
	35	3-1/2"	89.0/3.5	50.0/2.0	27.0/1.1	36.0/1.4	25.0/1.0	5/8"	152.0/6.0	120.7/4.8	136.0/5.4	70.0/2.8
	35	4"	99.0/3.9	50.0/2.0	27.0/1.1	36.0/1.4	25.0/1.0	5/8"	162.0/6.4	130.0/5.1	146.0/5.7	77.8/3.1
35	5"	120.0/4.7	50.0/2.0	28.0/1.1	36.0/1.4	25.0/1.0	5/8"	184.0/7.2	152.4/6.0	180.0/7.1	92.0/3.6	

Série Series	P <sub>max</sub> (bar)	Dimensions (mm/in)										
		A SAE	B	C	D	E	F	G (UNC)	H	I	L	M
RD2-V	420	1/2"	13.0/0.5	36.0/1.4	16.0/0.6	19.0/0.7	14.0/0.6	5/16"	57.0/2.2	40.5/1.6	47.0/1.9	18.3/0.7
		3/4"	19.0/0.7	36.0/1.4	19.0/0.7	22.0/0.9	16.0/0.6	3/8"	71.0/2.8	50.8/2.0	53.0/2.1	23.8/0.9
		1"	25.0/1.0	44.0/1.7	24.0/0.9	24.0/0.9	19.0/0.7	7/16"	80.0/3.1	57.1/2.2	69.0/2.7	27.8/1.1
		1-1/4"	31.0/1.2	44.0/1.7	27.0/1.1	25.0/1.0	22.0/0.9	1/2"	94.0/3.7	66.7/2.6	77.0/3.0	31.6/1.2
		1-1/2"	38.0/1.5	51.0/2.0	30.0/1.2	28.0/1.1	24.0/0.9	5/8"	106.0/4.2	79.4/3.1	89.0/3.5	36.5/1.4
		2"	50.0/2.0	70.0/2.8	37.0/1.5	33.0/1.3	32.0/1.3	3/4"	135.0/5.3	96.8/3.8	116.0/4.6	44.4/1.7

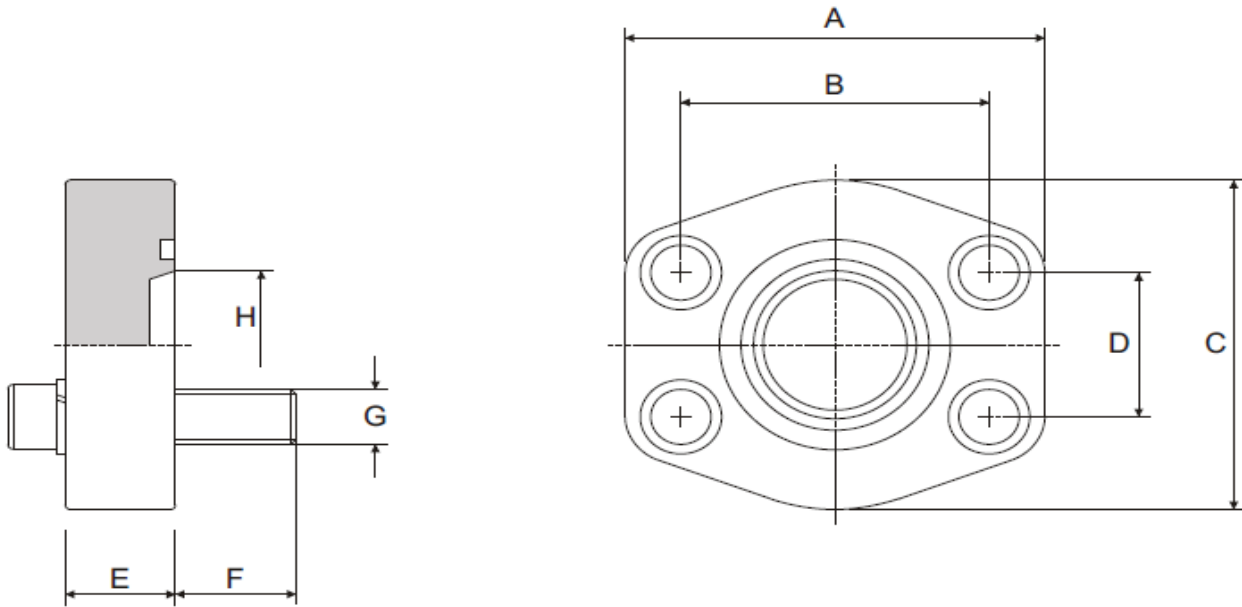
**RD2-S\*/FO\*; RD2-V\*/FO\***



Série Series	P <sub>max</sub> (bar)	Dimensions (mm/in)										
		A SAE	B	C	D	E	F	G (UNC)	H	I	L	M
RD2-S	348	7/8"-14	19.0/0.7	36.0/1.4	18.0/0.7	17.0/0.7	16.0/0.6	3/8"	66.0/2.6	47.6/1.9	49.0/1.9	17.5/0.7
		1-1/16"-12				23.0/0.9						
	348	1-1/16"-12	25.0/1.0	38.0/1.5	18.0/0.7	23.0/0.9	16.0/0.6	3/8"	71.0/2.8	52.4/2.1	53.0/2.1	26.2/1.0
		1-5/16"-12										
278	1-5/16"-12	31.0/1.2	41.0/1.6	21.0/0.8	23.0/0.9	18.0/0.7	7/16"	80.0/3.1	58.7/2.3	69.0/2.7	30.2/1.2	
	1-5/8"-12											
210	1-5/8"-12	38.0/1.5	44.0/1.7	25.0/1.0	23.0/0.9	18.0/0.7	1/2"	94.0/3.7	69.9/2.8	77.0/3.0	35.7/1.4	
	1-7/8"-12											

Série Series	P <sub>max</sub> (bar)	Dimensions (mm/in)										
		A SAE	B	C	D	E	F	G (UNC)	H	I	L	M
RD2-V	420	7/8"-14	19.0/0.7	36.0/1.4	19.0/0.7	23.0/0.9	16.0/0.6	3/8"	71.0/2.8	50.8/2.0	53.0/2.1	23.8/0.9
		1-1/16"-12										
		1-1/16"-12	25.0/1.0	44.0/1.7	24.0/0.9	23.0/0.9	19.0/0.7	7/16"	80.0/3.1	57.1/2.2	69.0/2.7	27.8/1.1
		1-5/16"-12										
		1-5/16"-12	31.0/1.2	44.0/1.7	27.0/1.1	23.0/0.9	22.0/0.9	1/2"	94.0/3.7	66.7/2.6	77.0/3.0	31.6/1.2
		1-5/8"-12										
1-5/8"-12	38.0/1.5	51.0/2.0	30.0/1.2	23.0/0.9	24.0/0.9	5/8"	106.0/4.2	79.4/3.1	89.0/3.5	36.5/1.4		
1-7/8"-12												

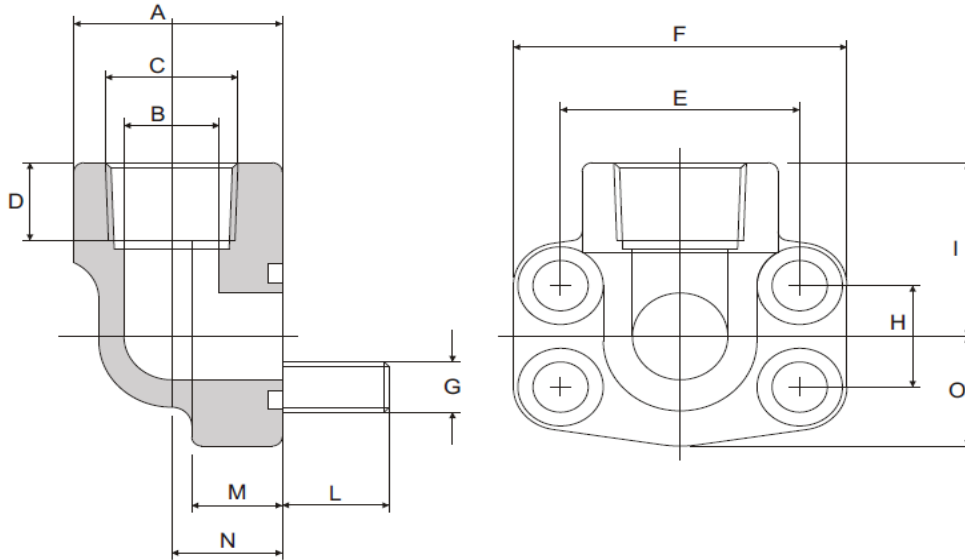
**RC2-S\*-N; RC2-V\*-N**



Série Series	P <sub>max</sub> (bar)	Dimensions (mm/in)								
		SAE	A	B	C	D	E	F	G (UNC)	H
RC2-S	348	1/2"	57.0/2.2	38.0/1.5	47.0/1.9	17.5/0.7	16.0/0.6	14.0/0.6	5/16"	10.0/0.4
	348	3/4"	66.0/2.6	47.6/1.9	49.0/1.9	22.2/0.9	18.0/0.7	16.0/0.6	3/8"	15.0/0.6
	348	1"	71.0/2.8	52.4/2.1	53.0/2.1	26.2/1.0	19.0/0.7	16.0/0.6	3/8"	18.0/0.7
	278	1-1/4"	80.0/3.1	58.7/2.3	69.0/2.7	30.2/1.2	21.0/0.8	18.0/0.7	7/16"	23.0/0.9
	210	1-1/2"	95.0/3.7	69.9/2.8	77.0/3.0	35.7/1.4	24.0/0.9	19.0/0.7	1/2"	28.0/1.1
	210	2"	103.0/4.1	77.8/3.1	89.0/3.5	42.9/1.7	24.0/0.9	19.0/0.7	1/2"	45.0/1.8
	175	2-1/2"	116.0/4.6	89.0/3.5	101.0/4.0	50.8/2.0	25.0/1.0	19.0/0.7	1/2"	58.0/2.3
	138	3"	136.0/5.4	106.4/4.2	124.0/4.9	62.0/2.4	25.0/1.0	27.0/1.1	5/8"	70.0/2.8
	35	3-1/2"	152.0/6.0	120.7/4.8	136.0/5.4	70.0/2.8	25.0/1.0	27.0/1.1	5/8"	85.0/3.3
	35	4"	162.0/6.4	130.0/5.1	146.0/5.7	77.8/3.1	25.0/1.0	27.0/1.1	5/8"	95.0/3.7
	35	5"	184.0/7.2	152.4/6.0	180.0/7.1	92.0/3.6	25.0/1.0	27.0/1.1	5/8"	110.0/4.3

Série Series	P <sub>max</sub> (bar)	Dimensions (mm/in)								
		SAE	A	B	C	D	E	F	G (UNC)	H
RC2-V	420	3/4"	71.0/2.8	50.8/2.0	53.0/2.1	23.8/0.9	19.0/0.7	16.0/0.6	3/8"	15.0/0.6
		1"	80.0/3.1	57.1/2.2	66.0/2.6	27.8/1.1	24.0/0.9	18.0/0.7	7/16"	22.0/0.9
		1-1/4"	94.0/3.7	66.7/2.6	77.0/3.0	31.6/1.2	27.0/1.1	24.0/0.9	1/2"	30.0/1.2
		1-1/2"	103.0/4.1	79.4/3.1	89.0/3.5	36.5/1.4	30.0/1.2	24.0/0.9	5/8"	35.0/1.4
		2"	135.0/5.3	96.8/3.8	123.0/4.8	44.4/1.7	35.0/1.4	31.0/1.2	3/4"	48.0/1.9

**RE2-S\*/FN\*; RE2-V\*/FN\***



Série Series	P <sub>max</sub> (bar)	Dimensions (mm/in)						
		C SAE	A	B	D	E	F	G (UNC)
RE2-S	348	1/2"	34.0/1.3	13.0/0.5	19.0/0.7	38.0/1.5	57.0/2.2	5/16"
	348	3/4"	38.5/1.5	19.0/0.7	19.0/0.7	47.6/1.9	68.0/2.7	3/8"
	348	1"	44.5/1.8	25.0/1.0	19.0/0.7	52.4/2.1	74.0/2.9	3/8"
	278	1-1/4"	53.5/2.1	31.0/1.2	22.0/0.9	58.7/2.3	81.0/3.2	7/16"
	210	1-1/2"	62.5/2.5	38.0/1.5	24.0/0.9	69.9/2.8	95.0/3.7	1/2"
	210	2"	77.0/3.0	50.0/2.0	26.0/1.0	77.8/3.1	105.0/4.1	1/2"
	175	2-1/2"	89.0/3.5	60.0/2.4	30.0/1.2	88.9/3.5	115.0/4.5	1/2"

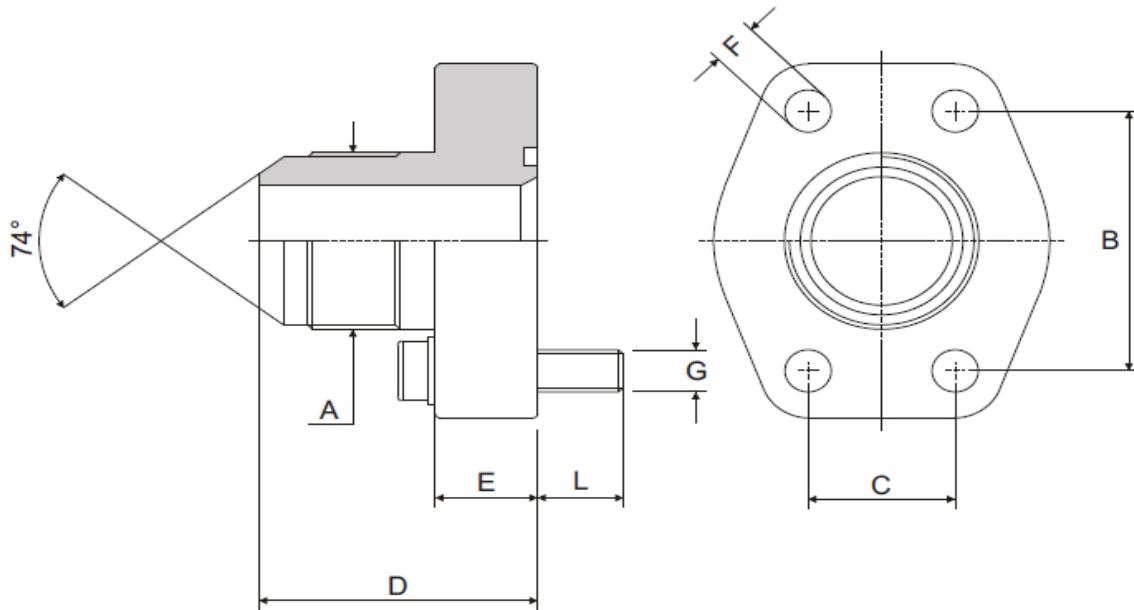
Dimensions (mm/in)						
H	I	O	M	N	L	
17.5/0.7	36.0/1.4	23.0/0.9	17.0/0.7	18.0/0.7	13.0/0.5	
22.2/0.9	38.0/1.5	25.0/1.0	18.0/0.7	22.0/0.9	15.0/0.6	
26.2/1.0	41.0/1.6	27.0/1.1	19.0/0.7	28.0/1.1	15.0/0.6	
30.2/1.2	50.0/2.0	34.0/1.3	22.0/0.9	30.0/1.2	17.0/0.7	
35.7/1.4	58.0/2.3	39.0/1.5	25.0/1.0	36.0/1.4	18.0/0.7	
42.9/1.7	65.0/2.6	44.0/1.7	25.0/1.0	41.0/1.6	18.0/0.7	
50.8/2.0	77.0/3.0	50.0/2.0	25.0/1.0	50.0/2.0	18.0/0.7	

Série Series	P <sub>max</sub> (bar)	Dimensions (mm/in)						
		C SAE	A	B	D	E	F	G (UNC)
RE2-V	420	1/2"	34.0/1.3	13.0/0.5	19.0/0.7	40.5/1.6	57.0/2.2	5/16"
		3/4"	44.5/1.8	19.0/0.7	22.0/0.9	50.8/2.0	72.0/2.8	3/8"
		1"	53.5/2.1	25.0/1.0	24.0/0.9	57.1/2.2	82.0/3.2	7/16"
		1-1/4"	62.5/2.5	31.0/1.2	25.0/1.0	66.7/2.6	95.0/3.7	1/2"
		1-1/2"	77.0/3.0	38.0/1.5	28.0/1.1	79.4/3.1	110.0/4.3	5/8"
		2"	87.0/3.4	50.0/2.0	34.0/1.3	96.8/3.8	134.0/5.3	3/4"

Dimensions (mm/in)						
H	I	O	M	N	L	
18.3/0.7	36.0/1.4	23.0/0.9	17.0/0.7	18.0/0.7	13.0/0.5	
23.8/0.9	41.0/1.6	27.0/1.1	20.0/0.8	28.0/1.1	15.0/0.6	
27.8/1.1	50.0/2.0	34.0/1.3	24.0/0.9	30.0/1.2	19.0/0.7	
31.6/1.2	58.0/2.3	39.0/1.5	25.0/1.0	36.0/1.4	21.0/0.8	
36.5/1.4	65.0/2.6	44.0/1.7	26.0/1.0	41.0/1.6	25.0/1.0	
44.4/1.7	75.0/3.0	58.0/2.3	35.0/1.4	45.0/1.8	32.0/1.3	



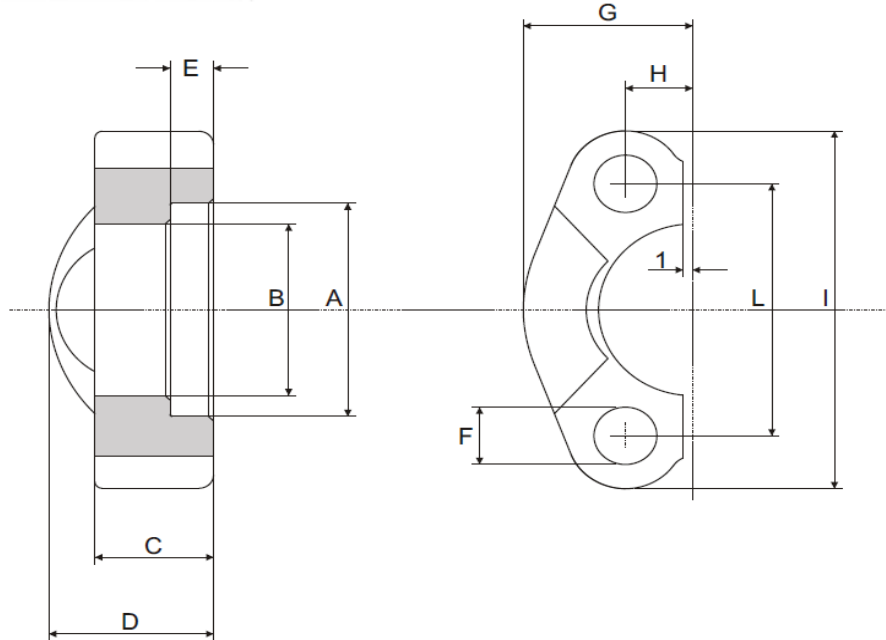
**RD2-S\*/MJ\*; RD2-V\*/MJ\***



Série Series	P <sub>max</sub> (bar)	Dimensions (mm/in)									
		SAE	A	B	C	D	E	F	G (UNC)	L	
RD2-S	348	1/2"	3/4"-16	38.0/1.5	17.5/0.7	41.0/1.6	16.0/0.6	9.0/0.4	5/16"	14.0/0.6	
			7/8"-14			41.0/1.6					
			1-1/16"-12			46.0/1.8					
	348	3/4"	3/4"	7/8"-14	47.6/1.9	22.2/0.9	47.0/1.9	18.0/0.7	11.0/0.4	3/8"	15.0/0.6
				1-1/16"-12			49.0/1.9				
				1-5/16"-12			50.0/2.0				
	348	1"	1"	1-1/16"-12	52.4/2.1	26.2/1.0	51.0/2.0	18.0/0.7	11.0/0.4	3/8"	15.0/0.6
				1-5/16"-12			52.0/2.0				
				1-5/8"-12			54.0/2.1				
	278	1-1/4"	1-1/4"	1-5/16"-12	58.7/2.3	30.2/1.2	56.0/2.2	21.0/0.8	11.5/0.5	7/16"	18.0/0.7
				1-5/8"-12			58.0/2.3				
				1-7/8"-12			61.0/2.4				
210	1-1/2"	1-1/2"	1-5/8"-12	69.9/2.8	35.7/1.4	64.0/2.5	24.0/0.9	13.5/0.5	1/2"	20.0/0.8	
			1-7/8"-12			67.0/2.6					

Série Series	P <sub>max</sub> (bar)	Dimensions (mm/in)										
		SAE	A	B	C	D	E	F	G (UNC)	L		
RD2-V	420	3/8"	3/4"-16	40.5/1.6	18.3/0.7	42.0/1.7	16.0/0.6	9.0/0.4	5/16"	14.0/0.6		
			7/8"-14			45.0/1.8						
			1-1/16"-12			47.0/1.9						
		3/4"	3/4"	3/4"	7/8"-14	50.8/2.0	23.8/0.9	49.0/1.9	18.0/0.7	11.0/0.4	3/8"	15.0/0.6
					1-1/16"-12			51.0/2.0				
					1-5/16"-12			52.0/2.0				
		1"	1"	1"	1-1/16"-12	57.1/2.2	27.8/1.1	58.0/2.3	21.0/0.8	13.0/0.5	7/16"	18.0/0.7
					1-5/16"-12			59.0/2.3				
					1-5/8"-12			61.0/2.4				
		1-1/4"	1-1/4"	1-1/4"	1-5/16"-12	66.7/2.6	31.6/1.2	64.0/2.5	24.0/0.9	15.0/0.6	1/2"	20.0/0.8
					1-5/8"-12			66.0/2.6				
					1-7/8"-12			69.0/2.7				
1-1/2"	1-1/2"	1-1/2"	1-5/8"-12	79.4/3.1	36.5/1.4	70.0/2.8	27.0/1.1	17.0/0.7	5/8"	20.0/0.8		
			1-7/8"-12			73.0/2.9						

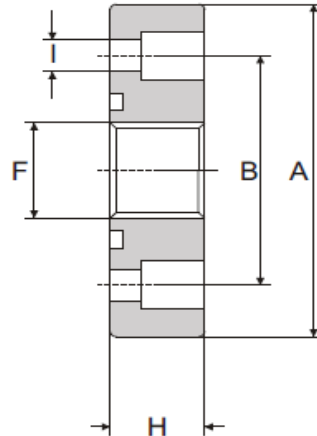
**SD2-S\*-N; SD2-V\*-N**



Série Series	P <sub>max</sub> (bar)	Dimensions (mm/in)										
		SAE	A	B	C	D	E	F	G	H	I	L
SD2-S	210	1/2"	31.0/1.2	24.3/1.0	13.0/0.5	20.0/0.8	6.2/0.2	8.8/0.3	23.0/0.9	8.7/0.3	54.0/2.1	38.1/1.5
	210	3/4"	38.9/1.5	32.1/1.3	14.0/0.6	22.0/0.9	6.2/0.2	10.5/0.4	26.0/1.0	11.1/0.4	65.0/2.6	47.6/1.9
	210	1"	45.2/1.8	38.5/1.5	16.0/0.6	24.0/0.9	7.5/0.3	10.5/0.4	29.2/1.1	13.1/0.5	70.0/2.8	52.4/2.1
	210	1-1/4"	51.6/2.0	43.7/1.7	14.0/0.6	22.0/0.9	7.5/0.3	12.0/0.5	36.3/1.4	15.1/0.6	80.0/3.1	58.7/2.3
	210	1-1/2"	61.1/2.4	50.8/2.0	16.0/0.6	25.0/1.0	7.5/0.3	13.5/0.5	41.1/1.6	17.9/0.7	94.0/3.7	69.9/2.8
	210	2"	72.2/2.8	62.7/2.5	16.0/0.6	26.0/1.0	9.0/0.4	13.5/0.5	48.2/1.9	21.4/0.8	102.0/4.0	77.8/3.1
	175	2-1/2"	84.9/3.3	74.9/2.9	19.0/0.7	38.0/1.5	9.0/0.4	13.5/0.5	54.0/2.1	25.4/1.0	115.0/4.5	88.9/3.5
	138	3"	102.4/4.0	90.9/3.6	22.0/0.9	41.0/1.6	9.0/0.4	17.0/0.7	65.3/2.1	31.0/1.0	135.0/4.5	106.4/3.5
	35	3-1/2"	115.0/4.5	102.4/4.0	23.0/0.9	45.0/1.8	10.7/0.4	17.0/0.7	70.0/2.6	34.9/1.2	152.0/5.3	120.7/4.2
	35	4"	127.8/5.0	115.1/4.5	25.0/1.0	48.0/1.9	10.7/0.4	17.0/0.7	75.0/2.8	38.9/1.4	160.0/6.0	130.2/4.8
	35	5"	153.2/6.0	140.5/5.5	28.0/1.1	50.0/2.0	10.7/0.4	17.0/0.7	82.0/3.0	46.0/1.5	183.0/6.3	152.4/5.1

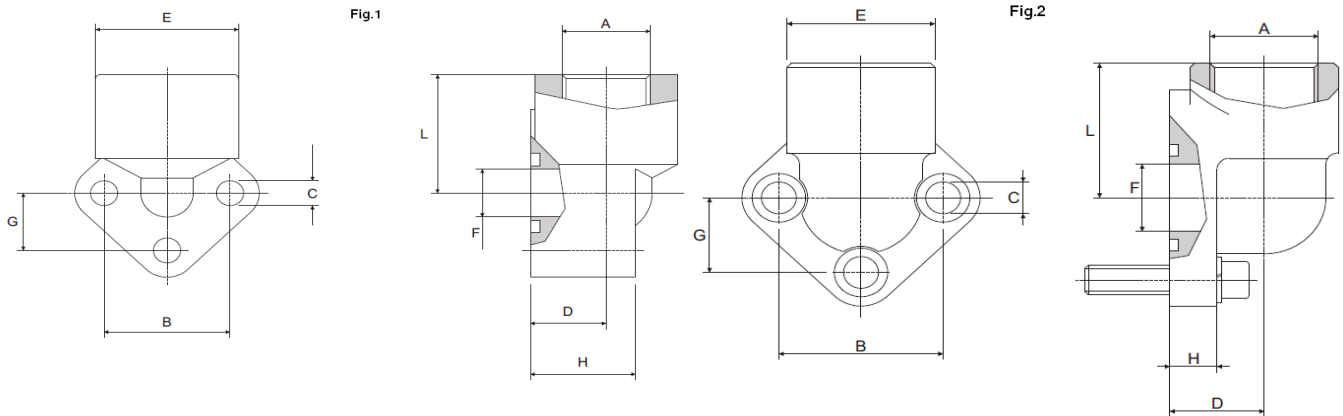
Série Series	P <sub>max</sub> (bar)	Dimensions (mm/in)										
		SAE	A	B	C	D	E	F	G	H	I	L
SD2-V	420	1/2"	32.5/1.3	24.6/1.0	16.0/0.6	22.0/0.9	7.2/0.3	8.8/0.3	24.0/0.9	9.1/0.4	57.0/2.2	40.5/1.6
		3/4"	42.0/1.7	32.5/1.3	19.0/0.7	28.0/1.1	8.3/0.3	10.5/0.4	30.0/1.2	11.9/0.5	72.0/2.8	50.8/2.0
		1"	48.4/1.9	38.9/1.5	24.0/0.9	32.0/1.3	9.0/0.4	13.0/0.5	35.0/1.4	13.9/0.5	81.0/3.2	57.0/2.3
		1-1/4"	54.8/2.2	44.5/1.8	27.0/1.1	38.0/1.5	9.8/0.4	15.0/0.6	39.0/1.5	15.9/0.6	96.0/3.8	66.7/2.6
		1-1/2"	64.3/2.5	51.6/2.0	30.0/1.2	42.0/1.7	12.1/0.5	17.0/0.7	48.0/1.9	18.3/0.7	113.0/4.4	79.4/3.1
		2"	80.2/3.2	67.6/2.7	37.0/1.5	52.0/2.0	12.1/0.5	21.0/0.8	57.0/2.2	22.2/0.9	134.0/5.3	96.8/3.8

**ED2**



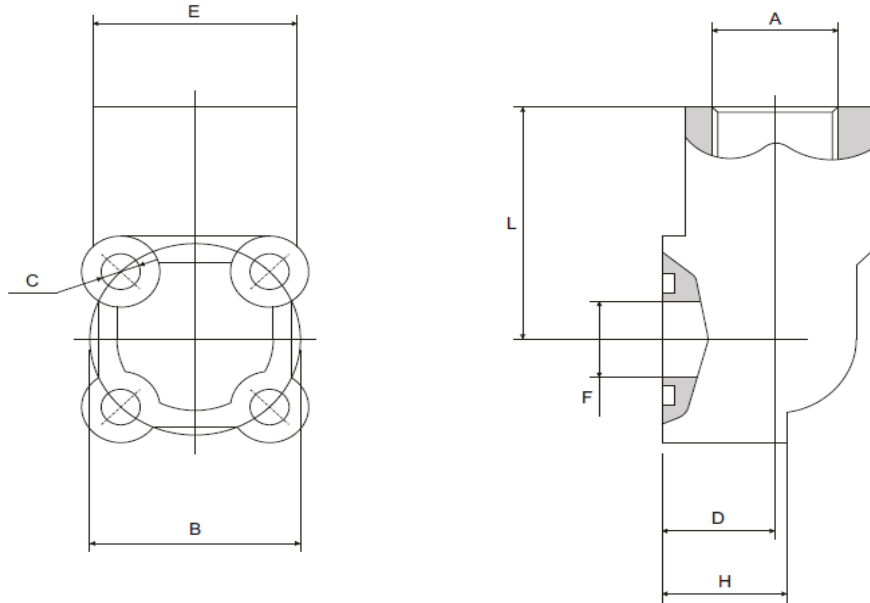
Série Series	Dimensions (mm/in)				Trous Holes	Boulons Bolts
	A	B	F	H		
ED2-EA	45.0/1.8	30.0/1.2	3/8"	13.0/0.5	4	M6X16
ED2-EB	58.0/2.3	40.0/1.6	1/2"	15.0/0.6	4	M8X20
ED2-ED	75.0/3.0	51.0/2.0	3/4"	18.0/0.7	4	M10X25
ED2-EF	88.0/3.5	62.0/2.4	1"	20.0/0.8	4	M10X25

**EE2**



Série Series	P <sub>max</sub> (bar)	Dimensions (mm/in)									Boulons Bolts	Fig.
		A	B	C	D	E	F	G	H	L		
EE2 (Acier/ Steel)	180	3/8"	30.0/1.2	6.5/0.3	18.0/0.7	34.0/1.3	12.5/0.5	15.0/0.6	26.0/1.0	31.0/1.2	M6X35	1
		1/2"										
		1/2"	40.0/1.6	8.5/0.3	21.5/0.8	42.0/1.7	18.0/0.7	20.0/0.8	31.0/1.2	40.0/1.6	M8X45	1
		3/4"										
3/4"	56.0/2.2	11.0/0.4	26.0/1.0	49.0/1.9	24.5/1.0	28.0/1.1	42.0/1.7	46.0/1.8	M10X60	1		
1"												
EE2 (Aluminium)		1-1/4"	62.0/2.4	13.0/0.5	35.0/1.4	55.0/2.2	31.0/1.2	31.0/1.2	14.0/0.6	55.0/2.2	M12X35	2
		1-1/2"										

**BE2**



Série Series	P <sub>max</sub> (bar)	Dimensions (mm/in)								Trous Holes	Boulons Bolts
		A	B	C	D	E	F	H	L		
BB2	180	3/8"	30.0/1.2	6.5/0.3	18.0/0.7	33.0/1.3	11.5/0.5	20.0/0.8	39.0/1.5	4	M6X30/M6X40
		1/2"									
		3/8"	35.0/1.4	6.5/0.3	18.0/0.7	34.0/1.3	14.0/0.6	20.0/0.8	42.5/1.7		
		1/2"									
		1/2"	40.0/1.6	6.5/0.3	24.0/0.9	41.0/1.6	18.0/0.7	28.0/1.1	47.5/1.9		
		3/4"									
3/4"	55.0/2.2	8.5/0.3	29.0/1.1	49.0/1.9	24.5/1.0	31.0/1.2	54.0/2.1				
1"											

# | NOTES

# | NOTES

## GARANTIE

---

Canimex inc. ne sera pas responsable des délais occasionnés par les exigences du distributeur, les difficultés ouvrières, les dommages à l'entrepôt, les accidents de toutes sortes, les fléaux de la nature, le manque de marchandises, les décisions gouvernementales ou toute autre cause de force majeure. La responsabilité de Canimex inc. sera limitée à la garantie émise par le fabricant. La garantie de Canimex inc. concernant tous les produits hydrauliques ne saurait en aucun cas excéder celle du fabricant. Ces produits sont garantis contre tout défaut pour une période d'un an à compter de la date de facturation de ces produits. En regard des produits qui auront été jugés défectueux pendant cette période, notre seule responsabilité est de remplacer ces produits sans frais, F.A.B. notre entrepôt. Cette garantie ne s'applique pas si le défaut est dû à un emploi abusif; à la négligence (incluant, mais non limité à, un mauvais entretien ou un entreposage inadéquat); à un accident; à une mauvaise installation; à une modification (incluant, mais non limité à, l'utilisation de pièces non conformes); à un mauvais ajustement ou à une mauvaise réparation; à une huile inadéquate; à la détérioration due à une réaction chimique; à l'usure due à la présence d'un produit. Aucune de ces circonstances ne saurait constituer un défaut au sens de la garantie. Canimex inc. ne peut être tenue responsable des dommages directs ou indirects, y compris ceux de nature accidentelle ou consécutifs d'un défaut. Canimex inc. ne sera pas responsable des délais causés par un défaut quelconque, ni pour les réparations effectuées par autrui. Les réparations faites par quelqu'un d'autre que Canimex inc. ne sauraient lier Canimex inc., et rendront toutes les garanties nulles et sans effet.

## WARRANTY

---

Canimex Inc. shall not be responsible for delays caused by distributor's request, labour troubles, damage to warehouse, accidents of any kind, acts of God, shortage in merchandise, governmental regulations or other causes similar or otherwise beyond Canimex Inc.'s control. Canimex Inc.'s responsibility shall be limited to the warranty of the manufacturer. Canimex Inc.'s warranty regarding all hydraulic products shall not exceed manufacturer's warranty. Those products are guaranteed against defects in workmanship and material for the period of one year upon invoicing goods. As to products or parts thereof, which Canimex Inc. finds to have been defective during the warranty period, Canimex Inc.'s sole responsibility hereunder shall be to replace the defective hydraulic parts without charge, F.O.B. Canimex Inc.'s warehouse. This warranty shall not apply to any product which has been subjected to misuse; misapplication, neglect (including but not limited to improper maintenance and storage); accident, improper installation, modification (including but not limited to use of unauthorized parts of attachment), adjustment or repair; inappropriate type of oil; deterioration by chemical action and wear, caused by the presence of abrasive materials, and/or by regular use of the product. None of these circumstances shall constitute a defect pertaining to the mentioned warranty. Canimex Inc. is not liable for damages of any sort whatsoever, including incidental or consequential damages. Canimex Inc. will not be liable for delays caused by said defects and will not be responsible for work or repairs done by others will automatically void the guarantee.



## At CANIMEX we redefine the meaning of service every day.

The top-quality products we import, design, assemble and produce are supported by our proactive involvement.

More than just the way we do business. It's the way we like to do business. And that makes all the difference in the world to our customers – and to us.



Canimex head office

***Hydraulic and  
Electronic Division***

CANIMEX INC.  
285, Saint-Georges, Drummondville  
(Québec) Canada J2C 4H3  
1-855-777-1335 | 1-819-477-1335  
[canimex.com](http://canimex.com) | [hyd@canimex.com](mailto:hyd@canimex.com)

