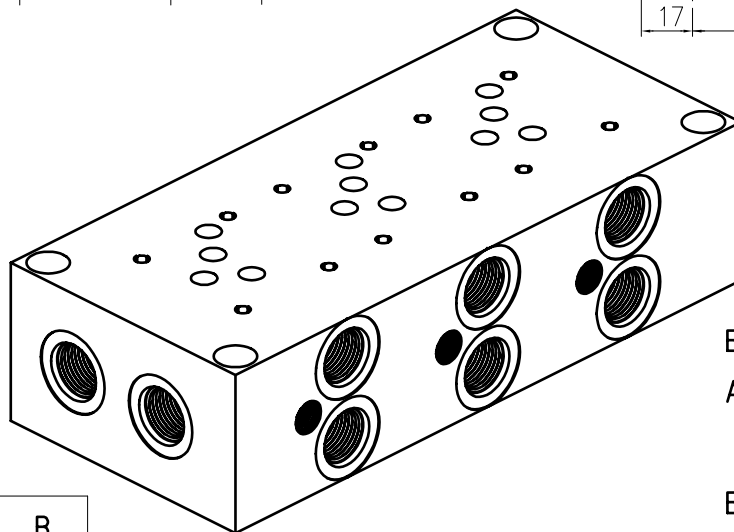


FILETTATURE

P-T=SAE 12
A-B=SAE 10

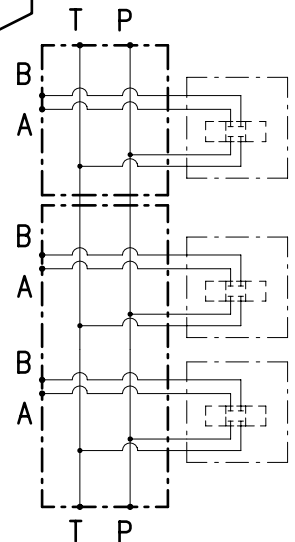
MATERIALE

CORPO : Alluminio



TIPO	A	B
PBLD05P/2	175	195
PBLD05P/3	250	270
PBLD05P/4	325	345
PBLD05P/5	400	420
PBLD05P/6	475	495

Pressione max. =350 Bar



N° R.S.	Approvazione	Disegnatore	Data	I.R.
-	C.F.	L.B.	17/10/96	1