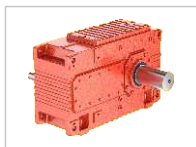
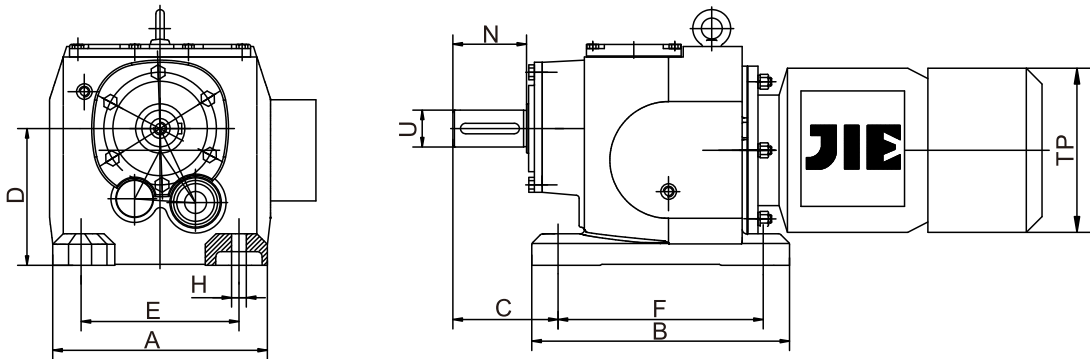


Excellence From Expertise



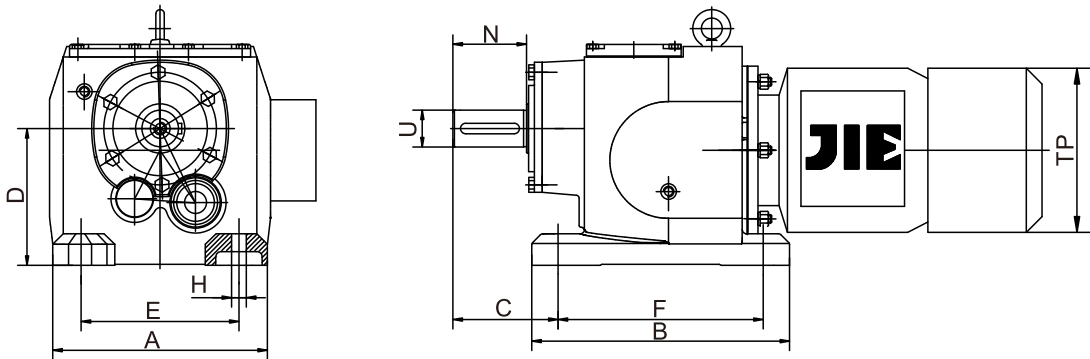
JIE Drives Interchange Guide



Size 27 Interchange Data — Inches

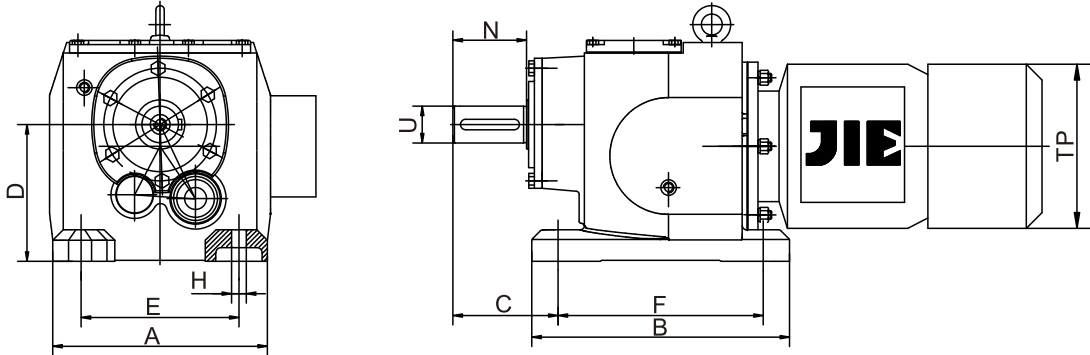
Manufacturer	Size	Torque (lb.-in.)	A	B	C	D	E	F	H	N	U
JIE	JRTR27	743	5.95	5.98	2.95	3.54	4.33	5.12	0.35	1.97	0.98
SEW – Eurodrive	R27	743	5.95	5.98	2.95	3.54	4.33	5.12	0.35	1.97	0.98
Nord – Unicase	SK02	717	5.12	5.28	1.97	3.39	4.33	2.36	0.35	1.5	0.75
RADICON	M012	800	5.31	5.16	2.28	2.95	4.33	5.31	0.39	1.57	0.75
Falk Ultramite	03UCBN2	576	5.31	4.33	2.28	2.95	4.33	3.35	0.39	1.57	0.75
Sterling	H0302	576	5.31	4.33	2.28	2.95	4.33	3.35	0.39	1.57	0.75
David Brown	M0320 BM	576	5.31	4.33	2.28	2.95	4.33	3.35	0.39	1.57	0.75
Brook Hansen S3 Series	SFN03B	720	6.3	4.33	2.21	2.95	4.33	3.35	0.35	1.5	0.75
Morse – Powerline	2002	720	6.06	4.45	2.23	2.95	4.33	3.35	0.35	1.5	0.75
Leroy Somer NXT	N2002	720	6.06	4.45	2.23	2.95	4.33	3.35	0.35	1.5	0.75
Hansen J Series	JFN03B	720	6.06	4.45	2.23	2.95	4.33	3.35	0.35	1.5	0.75
Sumitomo SM – Cyclo	3090	525	7.09	5.12	2.36	3.94	5.9	3.54	0.43	1.38	1.12
Sumitomo SM – Cyclo	3095	775	7.09	5.12	2.36	3.94	5.9	3.54	0.43	1.38	1.12
Sumitomo SM – Cyclo	3097	866	7.09	5.12	2.36	3.94	5.9	3.54	0.43	1.38	1.12





Size 37/47 Interchange Data — Inches

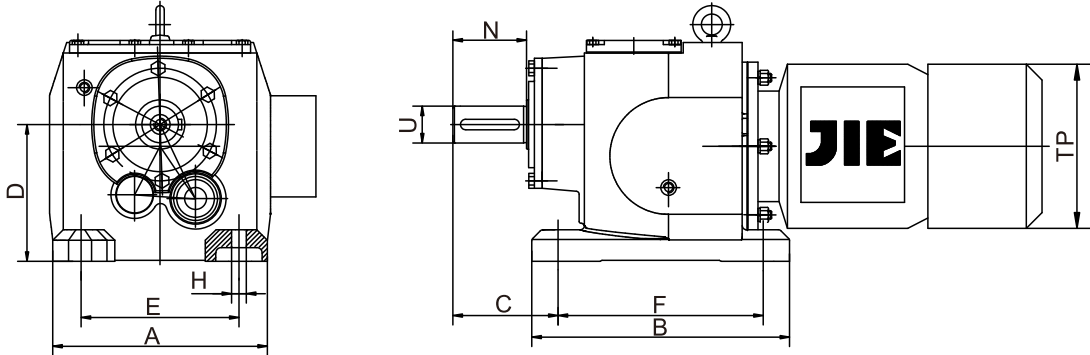
Manufacturer	Size	Torque (lb.-in.)	A	B	C	D	E	F	H	N	U
JIE	JRTR37	1143	5.71	6.3	2.95	3.54	4.33	5.12	0.35	1.97	0.98
JIE	JRTR47	1714	6.69	7.68	3.54	4.53	5.31	6.5	0.53	2.36	1.18
SEW – Eurodrive	R37	1143	5.71	6.3	2.95	3.54	4.33	5.12	0.35	1.97	0.98
SEW – Eurodrive	R47	1714	6.69	7.68	3.54	4.53	5.31	6.5	0.53	2.36	1.18
Nord – Unicase	SK12	1062	5.31	5.47	3.22	4.02	4.13	2.44	0.35	2.13	1
RADICON	M022	1410	5.71	5.98	2.95	3.54	4.33	5.71	0.39	1.97	1
Falk Ultramite	04UCBN2	1420	5.71	6.3	2.95	3.54	4.33	5.12	0.35	1.97	1
Sterling	H0402	1420	5.71	6.3	2.95	3.54	4.33	5.12	0.35	1.97	1
David Brown	M0420 BM	1420	5.71	6.3	2.95	3.54	4.33	5.12	0.35	1.97	1
Brook Hansen S3 Series	SFN15B	1600	5.71	6.3	2.95	3.54	4.33	5.12	0.39	1.97	1
Flender/Motox	Z30 (2 Red.)	752	5.71	6.3	2.95	3.54	4.33	5.12	0.35	1.97	1
Flender/Motox	D30 (3 Red.)	1062	5.71	6.3	2.95	3.54	4.33	5.12	0.35	1.97	1
Flender/Motox	D31 (3 REd.)	1593	5.71	6.3	2.95	3.54	4.33	5.12	0.35	1.97	1
Morse-Powerline	210	1280	6.38	7.68	2.63	3.15	4.33	6.5	0.35	2	1
Leroy Somer NXT	N21	1250	6.38	7.68	2.63	3.15	4.33	6.5	0.35	2	1
Hansen J Series	JFN13B	1250	6.38	7.68	2.63	3.15	4.33	6.5	0.35	2	1
Sumitomo SM – Cyclo	3100	1400	7.09	5.31	2.36	3.94	5.9	3.54	0.43	1.38	1.12



Size 57/67 Interchange Data — Inches

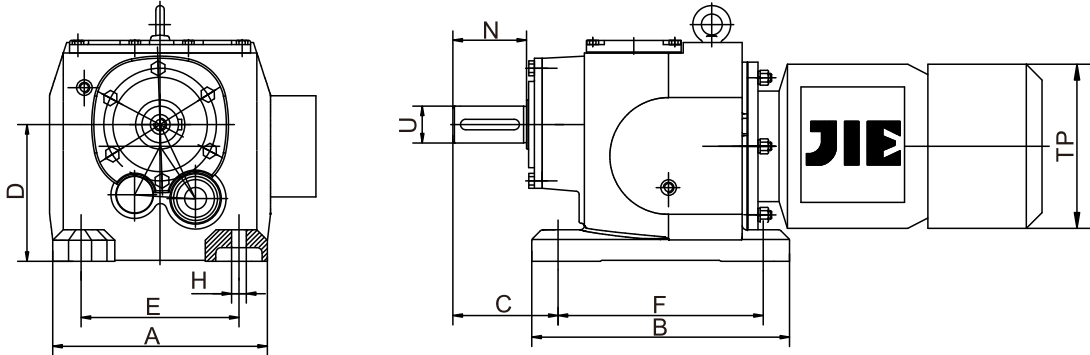
Manufacturer	Size	Torque (lb.-in.)	A	B	C	D	E	F	H	N	U
JIE	JRTR57	2571	7.48	7.87	3.54	4.53	5.31	6.5	0.53	2.76	1.38
JIE	JRTR67	3429	8.27	9.25	3.94	5.12	5.91	7.68	0.55	2.76	1.38
SEW – Eurodrive	R57	2571	7.48	7.87	3.54	4.53	5.31	6.5	0.53	2.76	1.38
SEW – Eurodrive	R67	3429	8.27	9.25	3.94	5.12	5.91	7.68	0.55	2.76	1.38
Nord – Unicase	SK22	1956	7.28	6.89	3.3	4.92	6.3	3.15	0.43	2.75	1.25
RADICON	M032	1850	5.71	5.98	2.95	3.54	4.33	5.71	0.39	1.97	1
RADICON	M042	3000	7.48	7.87	3.54	4.53	5.31	7.48	0.59	2.36	1.25
Falk Ultramite	06UCBN2	3070	7.48	7.87	3.54	4.53	5.31	6.5	0.59	2.36	1.25
Sterling	H0602	3070	7.48	7.87	3.54	4.53	5.31	6.5	0.59	2.36	1.25
David Brown	M0620 BM	3070	7.48	7.87	3.54	4.53	5.31	6.5	0.59	2.36	1.25
Brook Hansen S3 Series	SFN25B	3200	7.48	7.87	3.54	4.52	5.31	6.5	0.55	2.36	1.25
Flender/Motox	Z40 (2 Red.)	2213	7.68	7.87	3.54	4.53	5.31	6.5	0.55	2.36	1.25
Flender/Motox	D40 (3 Red.)	2213	7.68	7.87	3.54	4.53	5.31	6.5	0.55	2.36	1.25
Flender/Motox	Z41 (2 Red.)	885	7.68	7.87	3.54	4.53	5.31	6.5	0.55	2.36	1.25
Flender/Motox	D41 (3 Red.)	2921	7.68	7.87	3.54	4.53	5.31	6.5	0.55	2.36	1.25
Morse – Powerline	220	2735	7.52	8.58	3.01	3.94	5.31	7.56	0.55	2.5	1.25
Leroy Somer NXT	N22	2750	7.52	8.58	3.01	3.94	5.31	7.56	0.55	2.5	1.25
Hansen J Series	JFN23B	2750	7.52	8.58	3.01	3.94	5.31	7.56	0.55	2.5	1.25
Dodge – APG	DG3A	2852	8.38	8	3.58	5.37	7.12	7	0.44	2.51	1.25
Sumitomo SM – Cyclo	3110	2380	9.06	6.1	3.23	4.72	7.48	4.53	0.55	2.17	1.5
Sumitomo SM – Cyclo	3115	3270	9.06	6.1	3.23	4.72	7.48	4.53	0.55	2.17	1.5





Size 77 Interchange Data — Inches

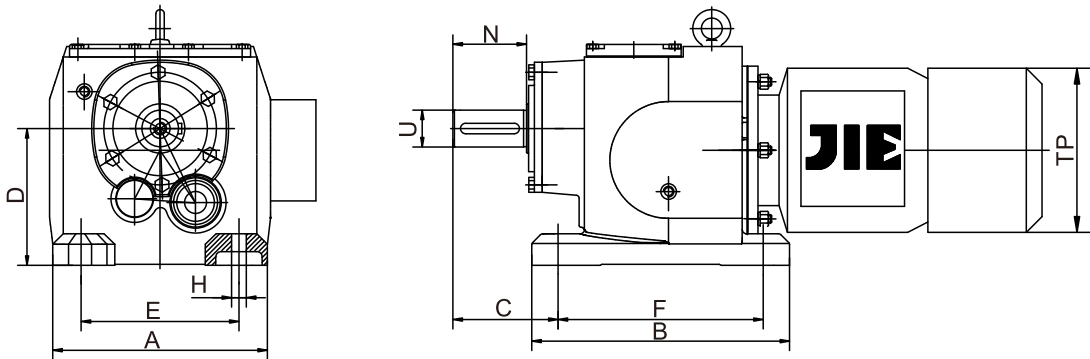
Manufacturer	Size	Torque (lb.-in.)	A	B	C	D	E	F	H	N	U
JIE	JRTR77	4686	9.06	9.65	4.53	5.51	6.69	8.07	0.69	3.15	1.575
SEW – Eurodrive	R77	4686	9.06	9.65	4.53	5.51	6.69	8.07	0.69	3.15	1.575
Nord – Unicase	SK32	3828	8.27	8.43	3.88	6.1	7.28	4.72	0.51	3.25	1.625
RADICON	M052	3980	7.48	7.87	3.94	4.53	5.31	7.48	0.59	2.76	1.375
RADICON	M062	5540	8.27	9.25	3.94	5.12	5.91	8.27	0.59	2.76	1.375
Falk Ultramite	07UCBN2	5410	9.06	9.65	4.53	5.51	6.69	8.07	0.75	3.15	1.625
Sterling	H0702	5410	9.06	9.65	4.53	5.51	6.69	8.07	0.75	3.15	1.625
David Brown	M0720 BM	5410	9.06	9.65	4.53	5.51	6.69	8.07	0.75	3.15	1.625
Brook Hansen S3 Series	SFN35B	6400	9.06	9.65	4.53	5.51	6.69	8.07	0.71	3.15	1.625
Flender/Motox	Z60	3540	9.06	9.65	4.53	5.51	6.69	8.07	0.71	3.15	1.625
Flender/Motox	D60	3540	9.06	9.65	4.53	5.51	6.69	8.07	0.71	3.15	1.625
Flender/Motox	Z61	3717	9.06	9.65	4.53	5.51	6.69	8.07	0.71	3.15	1.625
Flender/Motox	D61	5310	9.06	9.65	4.53	5.51	6.69	8.07	0.71	3.15	1.625
Morse – Powerline	230	5535	9.33	10.83	3.77	4.92	6.69	9.45	0.71	3	1.5
Leroy Somer NXT	N23	5400	9.33	10.83	3.77	4.92	6.69	9.45	0.71	3	1.5
Hansen J Series	JFN33B	5400	9.33	10.83	3.77	4.92	6.69	9.45	0.71	3	1.5
Dodge – APG	DG4A	3787	8.25	9	4.24	6.17	7	7.88	0.56	3.2	1.625
Sumitomo SM – Cyclo	3140	5160	13	7.68	3.94	5.9	11.42	5.71	0.71	2.76	1.875
Sumitomo SM – Cyclo	3145	5730	13	7.68	3.94	5.9	11.42	5.71	0.71	2.76	1.875



Size 87 Interchange Data — Inches

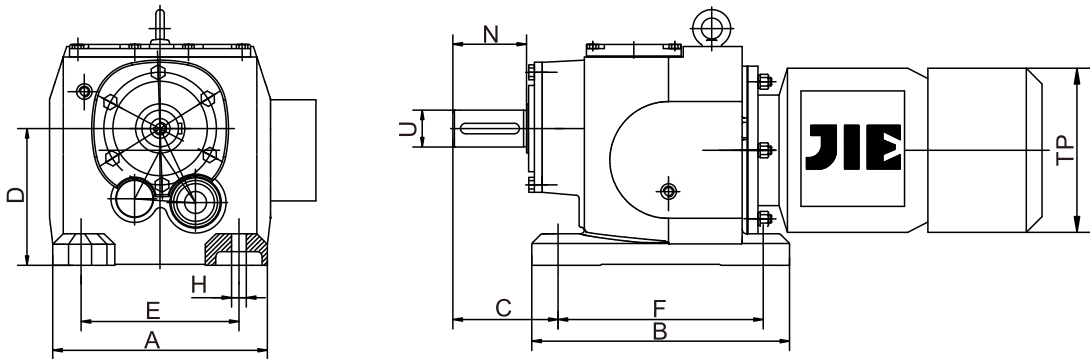
Manufacturer	Size	Torque (lb.-in.)	A	B	C	D	E	F	H	N	U
JIE	JRTR87	8857	11.42	12.20	5.51	7.09	8.46	10.24	0.69	3.94	1.969
SEW – Eurodrive	R87	8857	11.42	12.20	5.51	7.09	8.46	10.24	0.69	3.94	1.969
Nord – Unicase	SK42	8107	8.46	9.41	5.07	6.89	6.89	4.72	0.51	3.5	1.875
RADICON	M072	7800	9.06	9.65	4.53	5.51	6.69	9.06	0.75	3.15	1.625
Falk Ultramite	08UCBN2	10700	11.42	12.2	5.51	7.09	8.46	10.24	0.75	3.94	2.125
Sterling	H0820	10700	11.42	12.2	5.51	7.09	8.46	10.24	0.75	3.94	2.125
David Brown	M0820 BM	10700	11.42	12.2	5.51	7.09	8.46	10.24	0.75	3.94	2.125
Brook Hansen S3 Series	SFN45B	12500	11.42	12.2	5.51	7.08	8.46	10.24	0.75	3.94	2.125
Flender/Motox	Z80	7080	11.42	12.2	5.51	7.09	8.46	10.24	0.71	3.94	2.125
Flender/Motox	D80	7080	11.42	12.2	5.51	7.09	8.46	10.24	0.71	3.94	2.125
Flender/Motox	Z81	8850	11.42	12.2	5.51	7.09	8.46	10.24	0.71	3.94	2.125
Flender/Motox	D81	10620	11.42	12.2	5.51	7.09	8.46	10.24	0.71	3.94	2.125
Morse – Powerline	240	10260	11.81	11.02	4.48	6.3	9.06	9.25	0.71	3.5	1.75
Leroy Somer NXT	N24	9900	11.81	11.02	4.48	6.3	9.06	9.25	0.71	3.5	1.75
Hansen J Series	JFN43B	9900	11.81	11.02	4.48	6.3	9.06	9.25	0.71	3.5	1.75
Dodge – APG	DG5A	10541	12.25	10.31	5.06	7.74	10.76	9.06	0.72	3.98	2
Sumitomo SM – Cyclo	3160	8120	16.14	9.37	5.47	6.3	14.56	5.91	0.71	3.54	2.25
Sumitomo SM – Cyclo	3165	10800	16.14	9.37	5.47	6.3	14.56	5.91	0.71	3.54	2.25





Size 97 Interchange Data — Inches

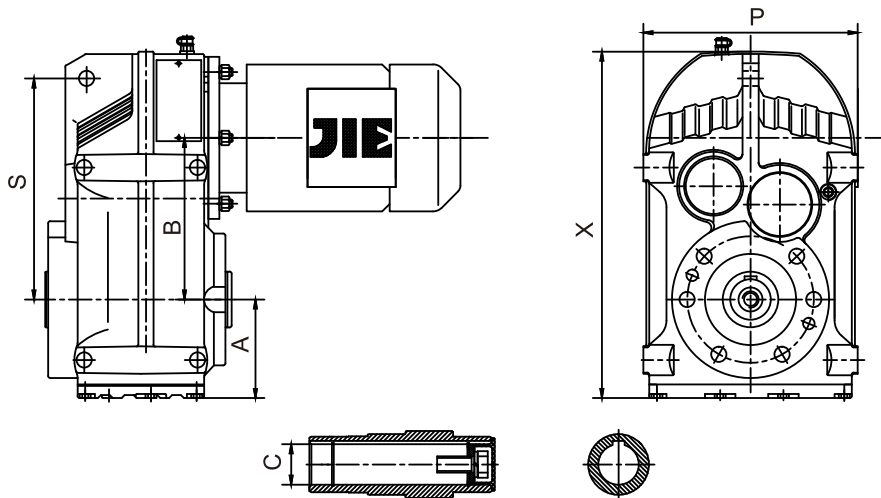
Manufacturer	Size	Torque (lb.-in.)	A	B	C	D	E	F	H	N	U
JIE	JRTR97	17143	13.39	14.37	6.30	8.86	9.84	12.20	0.87	4.72	2.362
SEW – Eurodrive	R97	17143	13.39	14.37	6.30	8.86	9.84	12.20	0.87	4.72	2.362
Nord – Unicase	SK52	13992	10.24	11.14	5.18	8.35	8.66	5.91	0.71	4	2.25
RADICON	M082	15000	11.42	12.2	5.51	7.09	8.46	11.42	0.75	3.94	2.125
Falk Ultramite	09UCBN2	19700	13.39	14.37	6.3	8.86	9.84	12.2	0.91	4.72	2.375
Sterling	H0902	19700	13.39	14.37	6.3	8.86	9.84	12.2	0.91	4.72	2.375
David Brown	M0920 BM	19700	13.39	14.37	6.3	8.86	9.84	12.2	0.91	4.72	2.375
Brook Hansen S3 Series	SFN55B	21000	13.39	14.37	6.3	8.85	9.84	12.2	0.87	4.72	2.375
Flender/Motox	Z100 (2 Red.)	14160	13.39	14.37	6.3	8.86	9.84	12.2	0.87	4.72	2.375
Flender/Motox	D100 (3 Red.)	14160	13.39	14.37	6.3	8.86	9.84	12.2	0.87	4.72	2.375
Flender/Motox	Z101 (2 Red.)	17700	13.39	14.37	6.3	8.86	9.84	12.2	0.87	4.72	2.375
Flender/Motox	D101 (3 Red.)	20355	13.39	14.37	6.3	8.86	9.84	12.2	0.87	4.72	2.375
Morse – Powerline	250	19900	14.17	13	5.85	7.87	11.02	11.02	0.94	4.75	2.375
Leroy Somer NXT	N25	19500	14.17	13	5.85	7.87	11.02	11.02	0.94	4.75	2.375
Hansen J Series	JFN43B	19500	14.17	13	5.85	7.87	11.02	11.02	0.94	4.75	2.375
Dodge – APG	DG6A	18675	12	12.88	5.75	9.85	10.26	11	0.88	4.75	2.375
Sumitomo SM – Cyclo	3170	16300	16.93	13.19	4.92	7.87	14.96	10.83	0.87	3.54	2.75
Sumitomo SM – Cyclo	3175	17700	16.93	13.19	4.92	7.87	14.96	10.83	0.87	3.54	2.75



Size ..7 Interchange Data — Inches

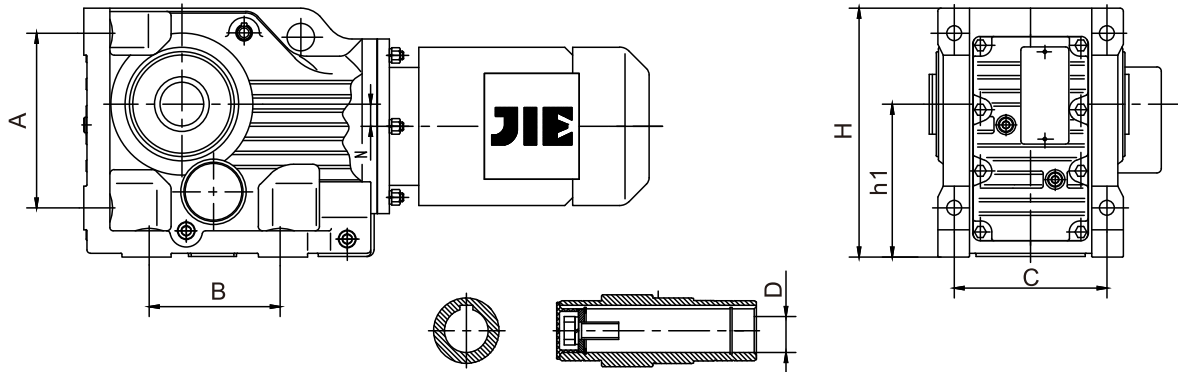
Manufacturer	Size	Torque (lb.-in.)	A	B	C	D	E	F	H	N	U
JIE	JRTR107	24571	15.75	17.32	7.28	9.84	11.42	14.57	1.02	5.51	2.756
JIE	JRTR137	45714	17.72	19.29	8.66	12.40	13.39	16.14	1.30	6.69	3.543
JIE	JRTR147	74286	20.87	23.23	10.24	13.98	14.96	19.69	1.54	8.27	4.331
JIE	JRTR167	102857	25.98	26.38	10.63	16.73	19.69	22.83	1.54	8.27	4.724
JIE	JRTR177	182857	29.92	28.43	12.40	20.47	22.44	23.70	1.54	9.84	6.299
JIE	JRTR187	285714	33.27	33.07	17.09	23.23	25.20	27.76	1.77	12.60	7.480
Manufacturer	Size	Torque (lb.-in.)	A	B	C	D	E	F	H	N	U
RADICON	M092/M093(1)	27500	13.39	14.37	6.3	8.86	9.84	12.2	0.91	4.72	2.375
RADICON	M092/M093(2)	27500	13.39	14.37	6.3	8.86	9.84	12.2	0.87	4.72	2.375
RADICON	M102/M103(1)	42300	15.75	17.32	7.28	9.84	11.42	14.57	1.06	5.51	2.875
RADICON	M102/M103(2)	42300	15.75	17.32	7.28	9.84	11.42	14.57	1.06	5.51	2.875
RADICON	M132/M133(1)	85900	17.72	19.29	8.66	10.43	13.39	16.14	1.34	6.69	3.625
RADICON	M132/M133(2)	85900	17.72	19.29	8.66	12.4	13.39	16.14	1.3	6.69	3.625
RADICON	M142/M143(1)	115000	20.87	23.23	10.24	11.81	14.96	19.69	1.61	8.27	4
RADICON	M142/M143(2)	115000	20.87	23.23	10.24	13.98	14.96	19.69	1.54	8.27	4





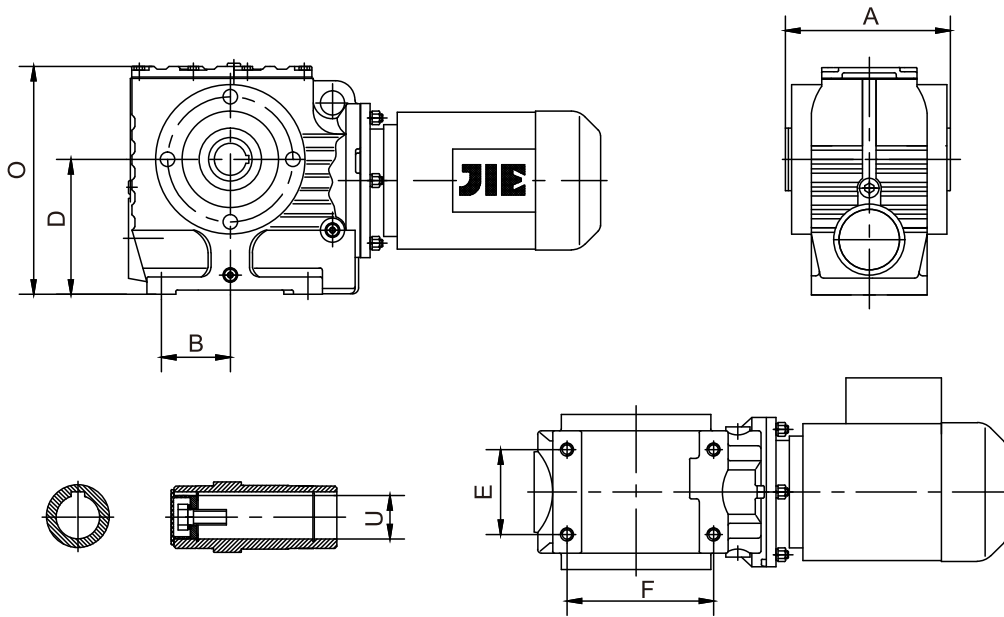
Size ..7 Interchange Data — Inches

Manufacturer	Size	Torque (lb.-in.)	A	B	C	X	P	S
JIE	JRTF37	1772	2.99	4.41	0.98	9.92	6.50	6.22
JIE	JRTF47	3544	3.03	5.04	1.18	10.59	7.09	6.69
JIE	JRTF57	5316	3.66	5.35	1.38	12.48	7.87	7.80
JIE	JRTF67	7265	3.82	6.28	1.57	13.50	8.35	8.58
JIE	JRTF77	13290	4.76	7.87	1.97	16.77	10.63	10.94
JIE	JRTF87	26580	5.98	9.71	2.36	20.91	12.99	13.62
JIE	JRTF97	38098	7.01	11.22	2.76	24.53	15.75	15.55
JIE	JRTF107	69462	7.87	13.09	3.54	28.23	17.72	19.09
JIE	JRTF127	106320	9.29	15.18	4.33	33.70	20.87	21.65
JIE	JRTF157	159480	11.26	17.60	4.72	40.20	25.98	25.98
JIE	JRTF167	283520	11.12	17.78		40.87	27.80	
JIE	JRTF177	443000	14.25	21.65		49.21	31.10	
Manufacturer	Size	Torque (lb.-in.)	A	B	C	X	P	S
RADICON	F02	1300	2.44	1.5	1.001/1.000	8.82	5.67	5.51
RADICON	F03	2210	3.03	3.31	1.251/1.250	9.92	6.5	6.22
RADICON	F04	3730	3.46	2.36	1.376/1.375	11.1	6.54	6.69
RADICON	F05	6200	3.82	4.53	1.501/1.500	12.8	7.87	7.8
RADICON	F06	7970	4.33	3.35	1.501/1.500	14.45	8.9	8.58
RADICON	F07	15000	5.28	4.53	2.001/2.000	17.68	10.47	10.94
RADICON	F08	27000	5.83	3.94	2.376/2.375	20.71	12.6	13.62
RADICON	F09	38000	6.89	8.86	2.751/2.750	24.09	15.12	15.55
RADICON	F10	71000	8.5	10.71	3.626/3.625	29.45	17.87	19.09



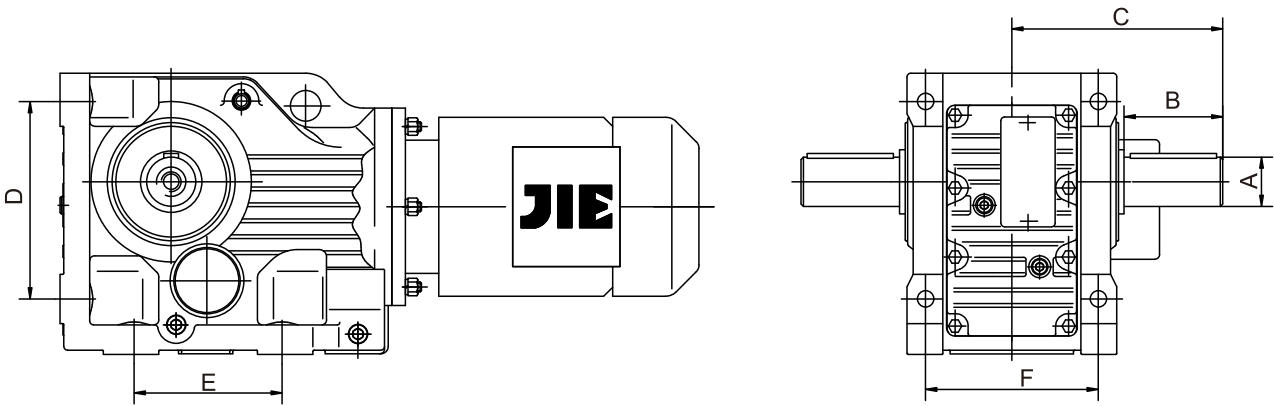
Size .7 Interchange Data — Inches

Manufacturer	Size	Torque (lb.-in.)	A	B	C	D	h1	N	H
JIE	JRTK37	1772	4.53	4.33	3.94	-	3.94	0.33	6.50
JIE	JRTK47	3544	5.12	5.12	4.72	1.38	4.41	0.28	7.28
JIE	JRTK57	5316	5.91	5.12	5.12	1.57	5.20	0.52	8.54
JIE	JRTK67	7265	6.30	4.72	5.51	1.57	5.51	0.79	8.98
JIE	JRTK77	13733	7.87	5.91	6.50	1.97	7.09	1.23	11.34
JIE	JRTK87	23922	9.17	7.09	7.09	2.36	8.35	1.02	13.39
JIE	JRTK97	38098	11.61	9.45	9.45	2.76	10.43	1.27	16.42
JIE	JRTK107	70880	14.17	11.02	10.63	3.54	12.40	2.05	19.80
JIE	JRTK127	115180	16.54	13.78	12.99	4.33	14.76	2.09	23.31
JIE	JRTK157	159480	19.69	14.96	16.54	4.72	17.72	2.82	27.76
JIE	JRTK167	283520	0.00	0.00	0.00	0.00	19.69	3.82	30.94
JIE	JRTK187	443000	0.00	0.00	0.00	0.00	23.62	4.41	37.09
Manufacturer	Size	Torque (lb.-in.)	A	B	C	D	h1	N	H
RADICON	K03	1990	4.53	4.33	3.94	1.251/1.250	3.94	0.63	6.57
RADICON	K04	3820	5.12	5.12	4.72	1.376/1.375	4.41	0.51	7.36
RADICON	K05	5790	5.91	5.12	5.12	1.501/1.500	5.2	0.2	8.54
RADICON	K06	7170	6.3	4.72	5.51	1.501/1.500	5.51	0.51	9.17
RADICON	K07	14200	7.87	5.91	6.5	2.001/2.000	7.09	0.98	11.34
RADICON	K08	24000	9.17	7.09	7.09	2.376/2.375	8.35	0.59	13.43
RADICON	K09	38000	11.61	9.45	8.27	2.751/2.750	10.43	0.39	16.54
RADICON	K10	63600	14.17	11.02	10.63	3.251/3.250	12.4	1.61	20.2
RADICON	K12	109000	16.54	13.78	12.99	4.001/4.000	14.76	2.56	23.23
RADICON	K15	186000	19.69	14.96	16.54	4.501/4.500	17.72	3.35	27.95
RADICON	K16	292000	21.26	21.26	18.9	5.252/5.250	19.69	3.94	31.5



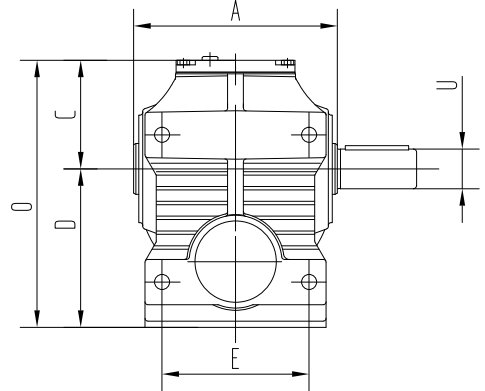
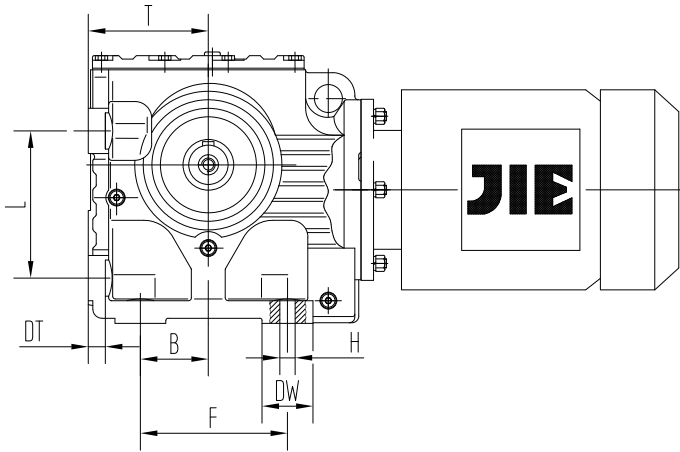
Size ..7 Interchange Data — Inches

Manufacturer	Size	Torque (lb.-in.)	A	B	D	E	F	U	O
JIE	JRTS37	797	4.82		3.23			0.79	5.16
JIE	JRTS47	1506	4.84	1.38	3.94	2.36	3.43	1.18/0.98	7.05
JIE	JRTS57	2658	6.02	2.30	4.41	2.36	4.61	1.38/1.18	7.44
JIE	JRTS67	4607	6.73	2.81	5.51	3.46	5.98	1.77/1.57	9.29
JIE	JRTS77	11252	8.39	3.35	7.09	4.02	6.69	2.36/1.97	11.85
JIE	JRTS87	20201	9.96	4.53	8.86	4.65	8.86	2.76/2.36	14.49
JIE	JRTS97	35440	11.57	5.31	11.02	6.30	9.76	3.54/2.76	17.91
Manufacturer	Size	Torque (lb.-in.)	A	B	D	E	F	U	O
RADICON	C03	1360	4.88	1.38	3.13	2.13	2.48	0.75	5.83
RADICON	C04	2400	5.12	1.38	3.66	2.2	3.15	1.25	6.61
RADICON	C05	4270	5.51	1.77	4.41	2.68	3.94	1.375	7.87
RADICON	C06	6780	7.09	2.2	5.49	3.15	4.8	1.5	9.57
RADICON	C07	11860	8.58	2.95	7.09	5.91	5.31	2	11.89
RADICON	C08	23000	9.84	3.62	8.86	7.87	7.09	2.375	14.76
RADICON	C09	49400	11.81	4.53	11.02	9.84	9.25	2.75	17.99
RADICON	C10	76700	13.78	6.69	13.19	11.81	12.2	3.25	22.24

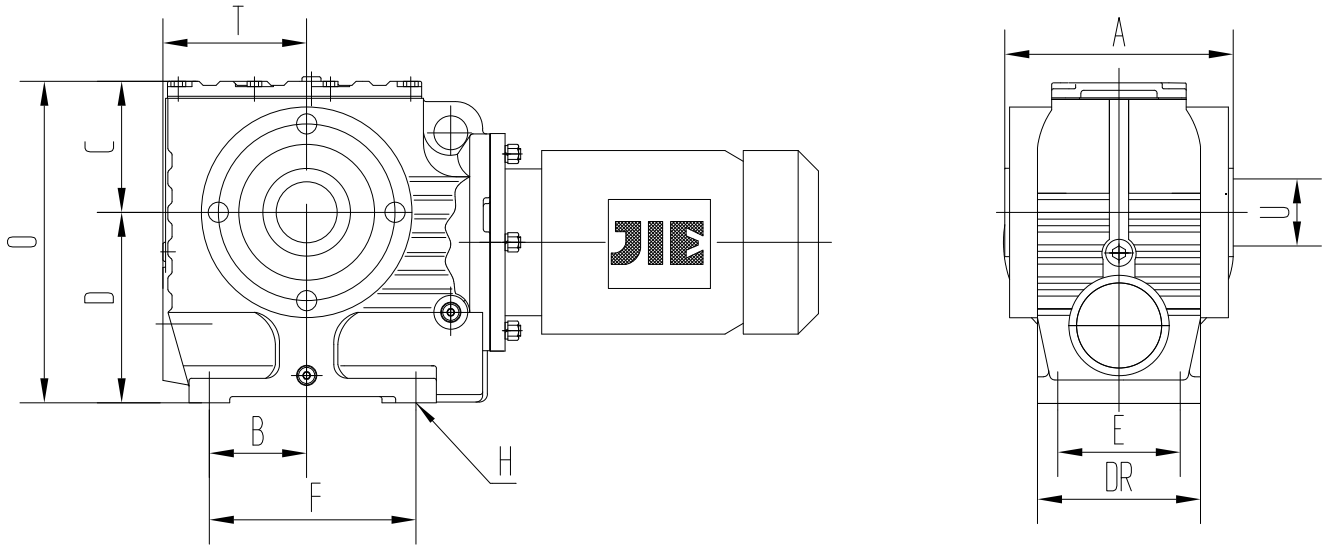


Size 37-77 Interchange Data — Inches

Manufacturer	Size	Torque (lb.-in.)	A	B	C	D	E	F
JIE	JRTK37	1772	25	50	110	115	110	100
SEW – Eurodrive	K37	1772	25	50	110	115	110	100
Stober	K10	1057	25	50	115	90	90	115
Stober	K20	1772	30	60	135	115	115	155
JIE	JRTK47	3540	30	60	135	130	130	120
SEW – Eurodrive	K47	3540	30	60	135	130	130	120
Stober	K30	3100	30	60	142	130	130	170
JIE	JRTK57	5310	35	70	153	150	130	130
SEW – Eurodrive	K57	5310	35	70	153	150	130	130
Stober	K40	4872	40	80	176	155	155	200
JIE	JRTK67	7257	40	80	171	160	120	140
SEW – Eurodrive	K67	7257	40	80	171	160	120	140
Stober	K51	7972	45	90	222	140	140	200

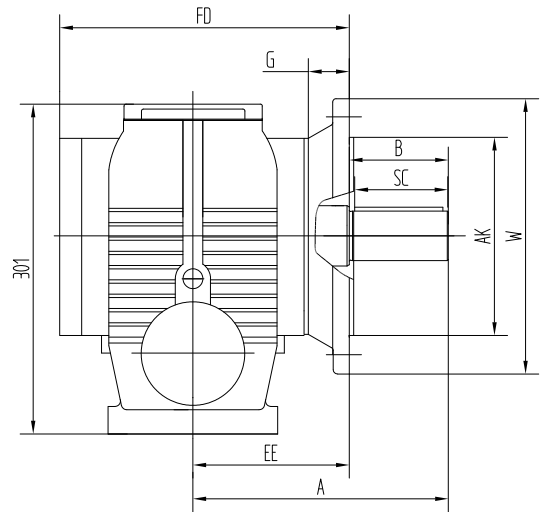
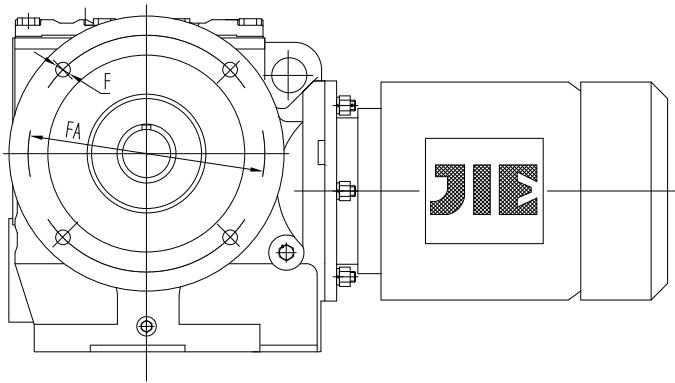


SIZE	Torque (lb.-in.)	A	B	C	D	E	F	H	O	L	T	U				
JIE JRTS37	690	4.72	1.38	2.48	3.15	3.54	2.48	0.35	5.63	3.14	2.48	0.75				
FALK 03UW SEW S32	843	4.64		2.68	2.8				5.81		2.13					
SEW S37	690	4.72		2.48	3.15				5.63		2.48					
JIE JRTS47	1292	4.72	1.38	2.56	3.94	3.94	3.15	0.43	6.5	3.15	2.95	1.25				
FALK 04UW SEW S42	1383	5.14		2.95	3.39				6.61		4.65 3.15		2.52			
SEW S47	1292	4.72		2.56	3.94				6.5		3.15		2.95			
JIE JRTS57	2320	5.91	1.77	3.03	4.41	4.34	3.94	0.43	7.44	3.94	3.15	1.375				
FALK 05UW SEW S52	3078	5.52		3.46	3.78				7.87		5.59 3.94		2.68			
SEW S57	2320	5.91		3.03	4.41				7.44		3.94		3.15			
JIE JRTS67	4032	6.61	2.36	3.78	5.51	5.12	5.12	0.53	9.29	5.12	3.15	1.5				
FALK 06UW SEW S62	5185	7.09					2.2	4.06	4.72		4.8		0.55	9.55	6.77	3.54
SEW S67	4032	6.61					3.78	5.51	5.12		0.53		9.29	5.12	3.15	

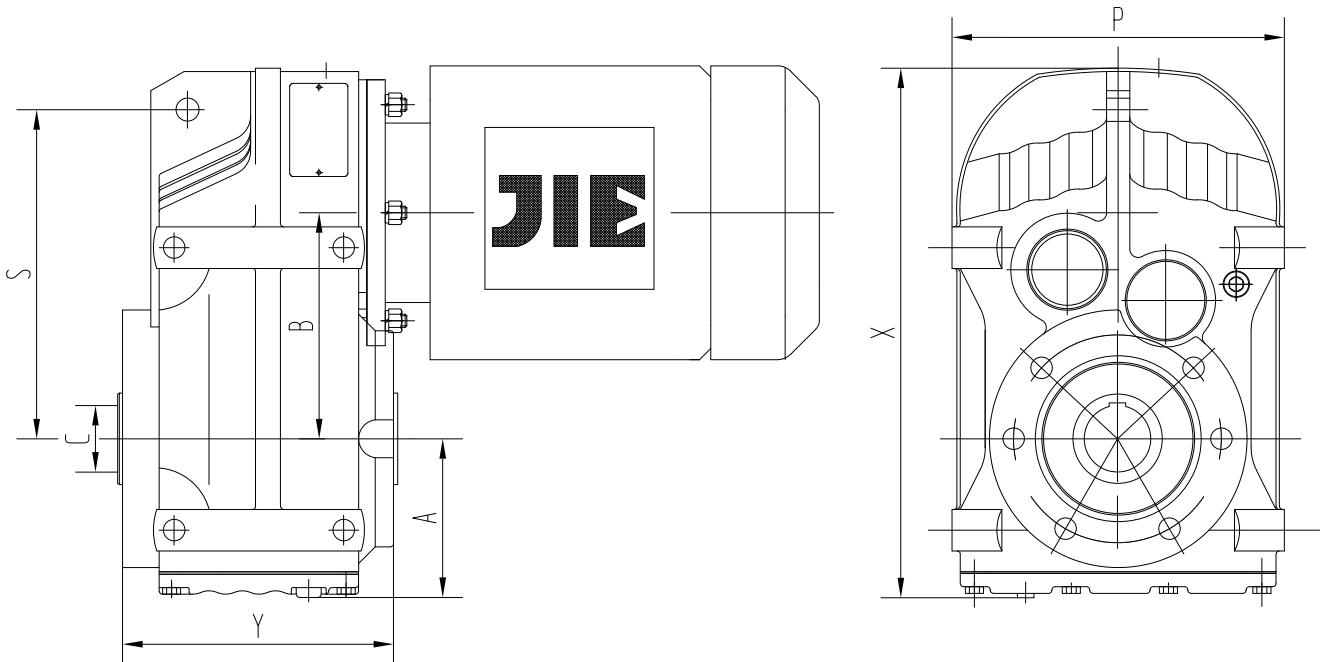


SIZE	Torque (lb.-in.)	A	B	C	D	E	F	H	O	L	T	U
JIE JR7S77	8450	8.27	2.95	4.76	7.09	7.28	5.9	5.31	0.69	11.85	4.92	2
FALK 07UW SEW S72	7049	8.58		4.8					0.71	11.9	5.63	
SEW S77	8450	8.27		4.76					0.69	11.85	4.92	
JIE JR7S87	11167	9.84	3.62	5.63	8.9	9.84	7.88	7.09	0.87	14.49	5.91	2.375
FALK 08UW SEW S82	13712	11		5.91						14.81	6.61	
SEW S87	11167	9.84		5.63						14.49	5.91	
JIE JR7S97	23900	11.42	4.53	6.89	11	11.81	9.84	9.25	1.02	17.91	7.09	2.75
FALK 09UW SEW S92	25275	13.26		6.97		12				17.97	7.68	
SEW S97	23900	11.42		6.89		11.81				17.91	7.09	

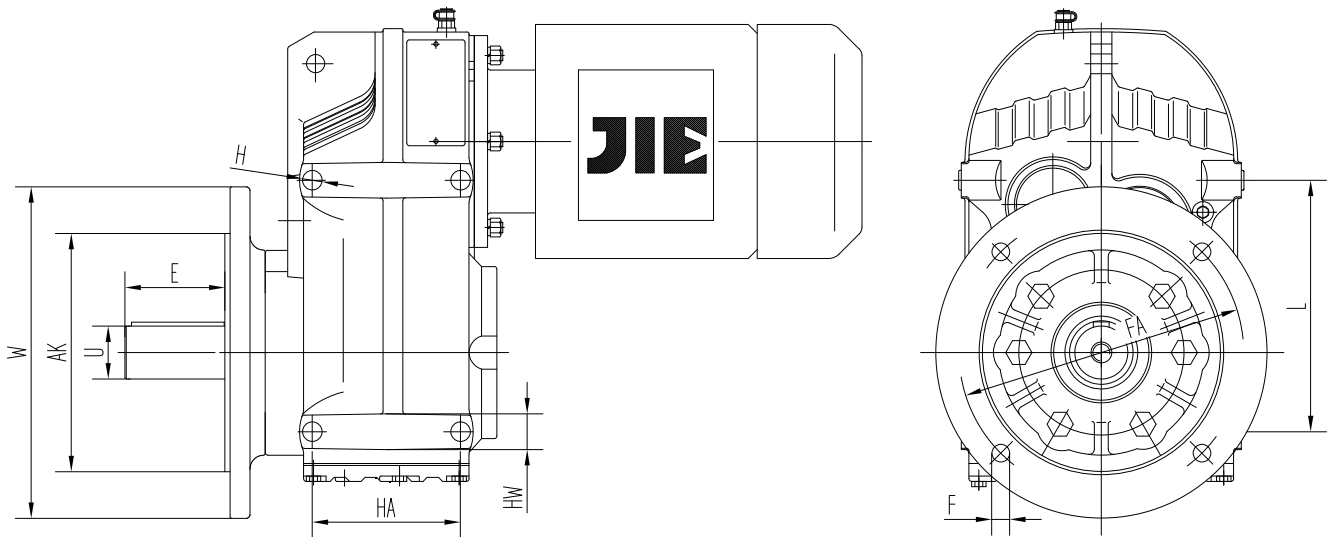




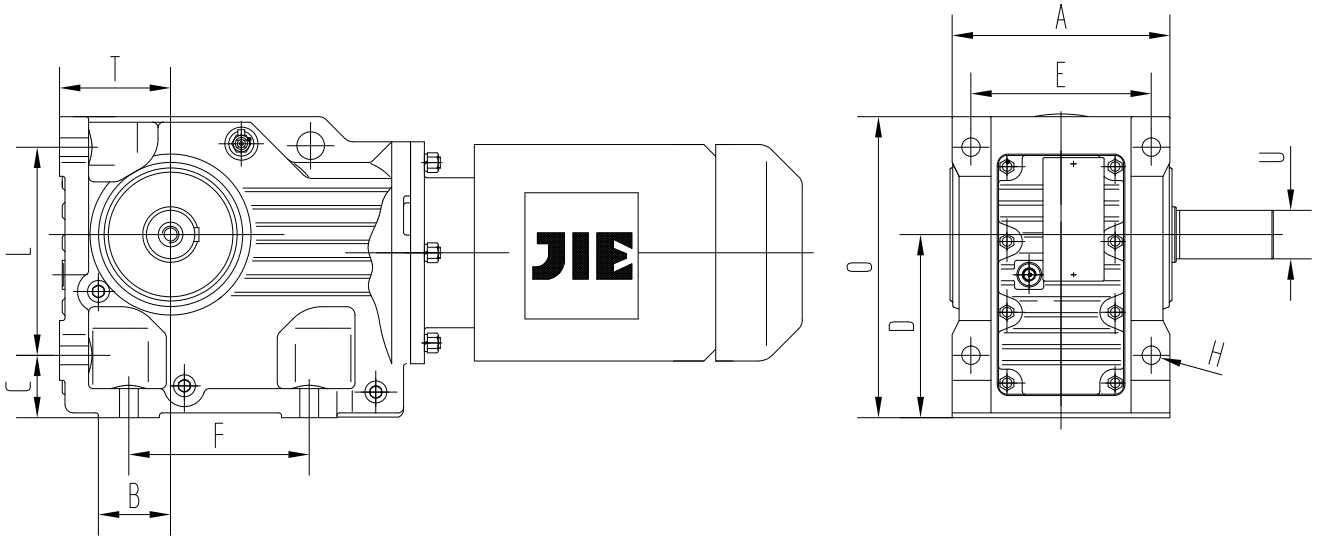
SIZE	A	B	Single Ext O/P Shaft	Double Ext O/P Shaft	SC	FD	EE	G	AK	W	FA	F	
JIE JRTS37	3.94	1.57	0.75	0.75	1.0625	5.57	3.31	0.39	4.33	6.3	5.12	0.35	
FALK 03UW SEW S32		1.38			1.1875	5.67				7.09			
SEW S37		1.57			1.0625	5.57				6.3			
JIE JRTS47	4.53	1.97	1	1	1.9375	6.77	3.94	0.47	5.12	7.87	5.12	0.43	
FALK 04UW SEW S42		1.81			1.5625	7.48							4.53
SEW S47		1.97			1.9375	6.77							3.94
JIE JRTS57	5.28	2.36	1.25	1.25	1.6875	7.36	4.21	0.59	7.09	9.84	6.5	0.53	
FALK 05UW SEW S52					2	7.44	4.17	0.63				0.55	
SEW S57					1.6875	7.36	4.21	0.59				0.53	
JIE JRTS67	6.73	2.76	1.375	1.375	1.8125	7.86	4.75	0.59	7.09	9.84	6.5	0.53	
FALK 06UW SEW S62	6.3	2.48			2.1872	8.66 7.94	5.12	0.63				0.55	
SEW S67	6.73	2.76			1.8125	7.86	4.75	0.59				0.53	
JIE JRTS77	8.11	3.54	1.75	1.75	2.75	9.57	5.59	0.63	9.06	11.81	8.46	0.53	
FALK 07UW SEW S72	7.68	2.99			2.6875	9.72 9.68		0.71	9.06	11.81		0.55	
SEW S77	8.11	3.54			2.75	9.57		0.63	9.06	11.81		0.53	
JIE JRTS87	10.04	4.72	2.375	2.375	3.625	11.34	5.91	0.71	9.84	13.78	11.81	0.69	
FALK 08UW SEW S82				2.3125	4.1875	11.22	6.5	0.71				0.71	
SEW S87				2.375	3.625	11.34	5.91	0.71				0.69	
JIE JRTS97	11.61	5.51	2.875	2.875	4.125	14.29	7.56	0.87	13.78	17.72	15.75	0.69	
FALK 09UW SEW S92		5.31		2.6875	4.6875	13.82	7.92	0.79				0.71	
SEW S97		5.51		2.875	4.125	14.29	7.56	0.87				0.69	



SIZE	Torque (lb.-in.)	A	B	X	S	P	With Straight Bore	
							Y	C
JIE JRTFA47	3203	3.03	5.04	10.59	6.69	7.28	6	1.375"
FALK 04UJ SEW FA40	3240	3.35	4.72	11.1		6.54	5.91	1.250"
SEW FA47	3203	3.03	5.04	10.59		7.28	6	1.375"
JIE JRTFA67	7236	3.82	6.28	13.5	8.58	8.54	7.2	1.500"
FALK 06UJ SEW FA60	6710	4.33	6.3	14.45		8.9	7.91	
SEW FA67	7236	3.82	6.28	13.5		8.54	7.2	
JIE JRTFA77	13,160	4.76	7.87	16.77	10.94	10.83	8.39	2.000"
FALK 07UJ SEW FA70	11,790	5.28	7.87	17.68		10.47	9.35	
SEW FA77	13,160	4.76	7.87	16.77		10.83	8.39	
JIE JRTFA87	22,260	5.98	9.71	20.91	13.62	13.23	9.57	2.375"
FALK 08UJ SEW FA80	20,330	5.83	8.9	20.71		12.6	10.43	
SEW FA87	22,260	5.98	9.71	20.91		13.23	9.57	
JIE JRTFA97	37,950	7.01	11.22	24.53	15.55	15.94	11.97	2.750"
FALK 09UJ SEW FA90	35,500	6.89	10.79	24.09		15.12	12.99	
SEW FA97	37,950	7.01	11.22	24.53		15.94	11.97	
JIE JRTFA107	67,007	7.87	13.09	28.23	19.09	17.72	13.94	3.250"
FALK 10UJ SEW FA100	47,580	8.5	13.07	29.45		17.87	1457 13.94	
SEW Fa107	67,007	7.87	13.09	28.23		17.72	13.94	

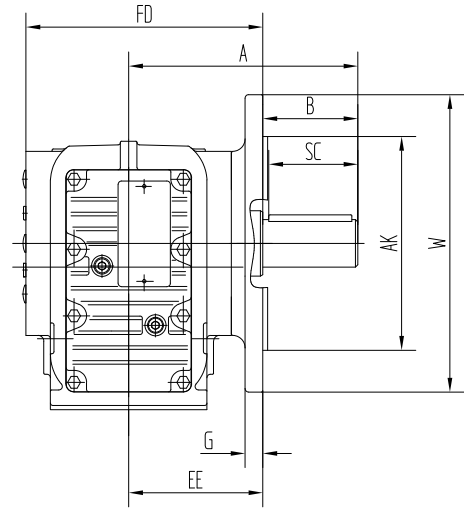
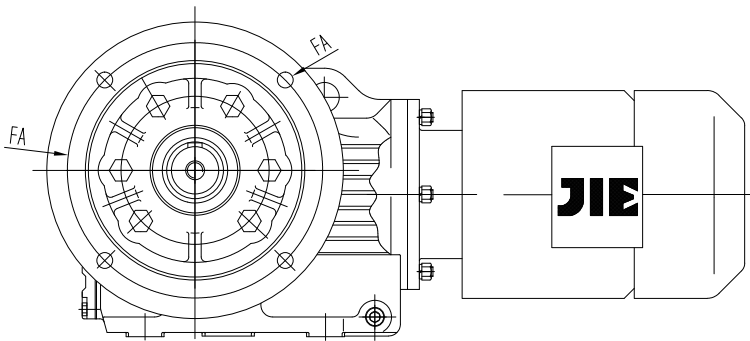


SIZE	ZY	AK	W	FA	F	E	U	HA	HW	H	L
JIE JRTFA47	6.77	5.12	7.87	6.5	0.43	2.1	1.250"	3.66	0.79	0.59	5.71
FALK 04UJ	7.44					1.81	1.000"	3.54	1.38	0.68	4.33
SEW FA47	6.77					2.1	1.250"	3.66	0.79	0.59	5.71
JIE JRTFA67	8.07	7.09	9.84	8.46	0.55	2.77	1.625"	4.41	0.98	0.67	7.48
FALK 06UJ	9.35					2.56	1.375"	4.92	1.97	0.79	5.91
SEW FA67	8.07					2.77	1.625"	4.41	0.98	0.67	7.48
JIE JRTFA77	9.84	9.05	11.81	10.43	0.53	3.3	2.000"	5.51	1.38	1.02	9.45
FALK 07UJ SEW	10.73					3.19	1.750"	5.91	2.36	0.98	7.78
SEW FA77	9.84					3.3	2.000"	5.51	1.38	1.02	9.45
JIE JRTFA87	10.71	7.09	9.84	8.46	0.55	4.21	2.375"	6.5	1.58	1.02	12.2
FALK 08UJ	12.17	9.05	11.81	10.43	0.53	4.49		6.69	2.36	0.94	7.88
SEW FA87	10.71	9.84	13.78	11.81	0.71	4.21		6.5	1.58	1.02	12.2
JIE JRTFA97	13.58	13.78	17.72	15.75	0.71	5.51	2.875"	8.07	1.97	1.1	13.78
FALK 09UJ	14.8					5.32		8.46	2.36	0.94	13.51
SEW FA97	13.58					5.51		8.07	1.97	1.1	13.78
JIE JRT107	15.51	13.78	17.72	15.75	0.71	6.69	3.625"	8.66	2.36	1.42	15.75
FALK 10UJ	16.71					6.77		9.84	2.95	1.06	19.63
SEW 107	15.51					6.69		8.66	2.36	1.42	15.75

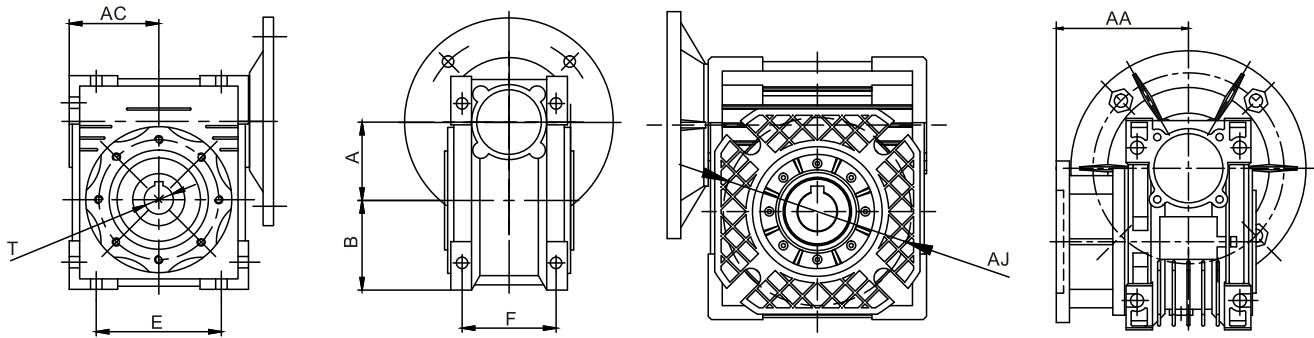


SIZE	Torque (lb.-in.)	A	B	C	D	E	F	H	O	L	T	U	
JIE JRTK37	1780	4.72	1.1	1.26	3.94	3.94	4.33	0.43	6.46	4.53	2.48	1.25	
FALK 03UB SEW K37	1792								6.57				
	1780								6.46				
JIE JRTK47	3705	5.71	1.38	1.46	4.41	4.72	5.12	0.43	7.32	5.12	2.8	1.375	
FALK 04UB SEW K46	3449								7.36				
SEW K47	3705								7.32				
JIE JRTK57	5412	6.18	1.18	1.77	5.2	5.12	5.12	0.53	8.54	5.91	3.15	1.5	
FALK 05UB	5514							0.55					
SEW K57	5412							0.53					
JIE JRTK67	7200	6.69	1.18	1.77	5.51	5.51	4.72	0.53	8.98	6.3	3.54	1.5	
FALK 06UB SEW K66	7732							0.55			9.17		3.54
SEW K67	7200							0.53			8.98		3.54
JIE JRTK77	13,620	7.87	1.57	2.17	7.09	6.5	5.91	0.69	11.34	7.87	4.41	2	
FALK 07UB SEW K76	14,120							0.71			11.34		4.41
SEW K77	13,620							0.69			11.34		4.41
JIE JRTK87	21,792	9.06	2.17	2.76	8.35	7.09	7.09	0.87	13.39	9.17	5.2	2.375	
FALK 08UB SEW K86	23,500							0.91			13.43		5.2
SEW K87	21,792							0.87			13.39		5.2





SIZE	A	B	Single Ext O/P Shaft Diameter	SC Single	Double Ext O/P Shaft Diameter	SC Double	FD	EE	G	AK	W	FA	F					
JIE JRTK37	4.33	1.97	1	1.3125	1	1.3125	5.57	3.31	0.39	4.33	6.3	5.12	0.35					
FALK 03UB		1.85		1.4375		1.4375	5.67				7.09							
SEW K37		1.97		1.3125		1.3125	5.57				6.3							
JIE JRTK47	5.31	2.36	1.25	1.3875	2	1.6875	6.77	3.94	0.47	5.12	7.87	6.5	0.43					
FALK 04UB SEW K46		2.2		1.3875		1.6875	6.77							4.53				
SEW K47		2.36		1.3875		1.6875	6.77							3.94				
JIE JRTK57	6.02	2.76	1.375	2.76	1.375	2.76	7.36	4.21	0.59	7.09	9.84	8.46	0.53					
FALK 05UB		2.6		2.375		2.375	7.44						4.17	0.63	0.55			
SEW K57		2.76		2.76		2.76	7.36						4.21	0.59	0.53			
JIE JRTK67	6.73	3.15	1.625	3.15	1.625	3.15	7.86	4.75	0.59	7.09	9.84	8.46	0.53					
FALK 06UB SEW K66	6.73	3	1.625	2.375	1.5	2.375	8.66	5.12	0.63				0.55					
SEW K67	6.73	3.15	1.625	3.15	1.625	3.15	7.86	4.75	0.59				0.53					
JIE JRTK77	8.11	3.94	2	3.94	2	3.94	9.57	5.59	0.63	9.06	11.81	10.43	0.53					
FALK 07UB SEW K76	8.11	3.74	2	2.75	2	2.75	9.72		0.71				9.06	11.81	10.43	0.55		
SEW K77	8.11	3.94	2	3.94	2	3.94	9.57		0.63				9.06	11.81	10.43	0.53		
JIE JRTK87	9.45	4.72	2.375	4.72	2.375	4.72	11.34	5.91	0.71	9.84	13.78	11.81	0.69					
FALK 08UB SEW K86		4.49		3.6875		2.375	3.6875	11.22	6.5				0.71	9.84	13.78	11.81	0.71	
SEW K87		4.72		4.72		2.375	4.72	11.34	5.91				0.71	9.84	13.78	11.81	0.69	
JIE JRTK97	11.46	5.51	2.875	5.51	2.875	5.51	14.29	7.56	0.87	13.78	17.72	15.75	0.69					
FALK 09UB SEW K96		5.32		4.625		2.875	3.6875	13.82	7.92				0.79	13.78	17.72	15.75	0.71	
SEW K97		5.51		5.51		2.875	5.51	14.29	7.56				0.87	13.78	17.72	15.75	0.69	
JIE JRTK107	13.66	6.69	3.625	6.69	3.625	6.69	15.4	8.51	0.87	13.78	17.72	15.75	0.69					
FALK 10UB SEW K106	13.31	6.42		5.9375		3.125	4.625	16.16					9.27	0.87	13.78	17.72	15.75	0.71
SEW K107	13.66	6.69		6.69		3.625	6.69	15.4					8.51	0.87	13.78	17.72	15.75	0.69
JIE JRTK127	16.46	8.27	4.375	8.27	4.375	8.27	18.07	10.08	0.98	17.72	21.65	19.69	0.69					
FALK 12UB SEW K126	15.94	7.87		6.5		3.875	6.5	18.52	10.46	0.87 0.98	13.78	17.72	15.75	0.71 0.71				
SEW K127	16.46	8.27		8.27		4.375	8.27	18.07	10.08	0.98	17.72	21.65	19.69	0.69				















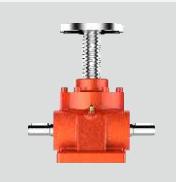


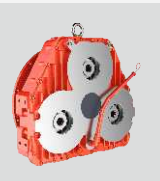
Manufacturer	SIZE	A	B	AC	T		F	E	AJ	AA
					(in)	(mm)				
JIE	30	30	40	40		14MM	44	54	68	54.5
LEESON BRAVO	30	30	55	46		14MM	65-66	50	68	50.5
Bonfiglioli VF	30	30	55	46		14MM	66	50	68	50.5
Motovario	30	30	40	40		14MM	44	65	68	54.5
Rossi	32	32	48	48		19MM	52	32	100	71
SITI / Lafert	30	30	42	42		14MM	55	52	---	---
STM	28	28	52	45		14MM	66	52	56	49
Unirid	30	30	37	45		14MM	55	50	80	65
Varvel	28	28	52	40		14MM	66	52	68	50.5
JIE	40	40	50	50		18MM	60	70	80	67
LEESON BRAVO	45	45	72	54.9	0.75	18MM	80-81	50-52	87	60.5
Bonfiglioli VF	44.6	44.6	72	54	---	18MM	81	52	87	60
Motovario	40	40	50	50	0.75	18MM	43	75	87	67
Nord Unibloc	40	40	50	50	1	—	60	70	75-101	75
Rossi	40	40	56	56	---	24MM	62	70	115	80
SITI / Lafert	40	40	71	59	---	19MM	84	70	87	60
STM	40	40	71	63	---	19(18)MM	84	70	87	69
Unirid	40	40	45	60	---	19MM	65	74	100	80
Varvel	40	40	71	60	---	19(18)MM	84	70	87	69



Manufacturer	SIZE	A	B	AC	T		F	E	AJ	AA
					(in)	(mm)				
JIE	50	50	60	60		25	70	80	85	90
LEESON BRAVO	50	50	82	65	1	25MM	98-100	63-65	90	85
Bonfiglioli VF	49.5	49.5	82	63	---	25MM	98.5	63	90	85
Motovario	50	50	60	60	1	25MM	49	85	90	90
Nord Unibloc	50	50	60	60	1.125	—	70	80	85-114	85
Rossi	50	50	67	67	---	28MM	75	86	130	80
SITI / Lafert	50	50	85	69	---	24MM	96	85	90	85
STM	50	50	85	72	---	24(25)MM	99	85	90	93
Unirid	50	50	55	72.5	---	24MM	80	95	115	100
Varvel	50	50	85	70	---	24(25)MM	99	85	90	93

JIE	63	63	72	72		25MM	85	100	150	82
LEESON BRAVO	63	63	100	79	1.125	25MM	110-111	95	150	86
Bonfiglioli VF	63	63	100	80	---	25MM	111	95	150	86
Motovario	63	63	72	72	1.125	25MM	67	95	150	82
Nord Unibloc	63	63	72	72	1.438	---	85	100	150	94
Rossi	63	63	80	80	---	32MM	90	102	165	100
SITI / Lafert	60	60	100	94	---	25MM	111	95	165	102
STM	63	63	100	81	---	25MM	111	95	150	85
Unirid	63	63	67	82.5	---	28MM	95	105	130	120
Varvel	60	60	100	78	---	25MM	111	95	150	86

JIE	90	90	103	103		35MM	100	140	175	111
LEESON BRAVO	85	85	142	98	1.5	35MM	140	140	176	108
Bonfiglioli VF	86	86	142	110	---	35MM	146	140	176	110.5
Motovario	90	90	103	103	1.375	35MM	74	130	175	111
Rossi	80	80	100	100	---	38MM	106	132	215	112
SITI / Lafert	80	80	142	105	---	35MM	147	140	165	120
STM	85	85	135	111	---	32(35)MM	140	140	165	100
Unirid	80	80	85	105	---	38MM	120	140	165	150
Varvel	85	85	135	111	---	32(35)MM	140	140	165	100

<p>JRT GEAR UNITS & GEARMOTORS</p>		<p>JRTR Series Helical Gearmotors Size:17-187 Ratio:3.37-289.74 Input power:0.12-250kW Output torque:2.4-55435N.m</p>	 <p>JRTF Series Parallel Shaft-Helical Gearmotors Size:37-177 Ratio:3.77-281.71 Input power:0.12-250kW Output torque:3.5-56845N.m</p>
<p>JRH INDUSTRY GEAR UNITS</p>		<p>JRHH Series Parallel Shaft Gear Units Size:3-28 Ratio:1.25-450 Input power:4.3-10515kW Output torque:2300-1400000N.m</p>	 <p>JRHB Series Helical-Bevel Gear Units Size:4-28 Ratio:5-400 Input power:2.8-4908kW Output torque:5500-1400000N.m</p>
<p>JRP PLANETARY GEAR UNITS</p>		<p>JRP Series Planetary Gear Units Size:9-36 Ratio:25-4000 Input power:0.4-12934kW Output torque:2600000N.m</p>	 <p>JRP Series Planetary Gear Units Size: 01-8 Ratio:3.08-3460 Input power:0.02-192kW Output torque:1000-13000N.m</p>
<p>JRST WORM GEAR UNITS</p>		<p>JRSTD Series Worm Gears Size:25-150 Ratio:7.5-100 Input power:0.06-15kW Output torque:2.6-2670N.m</p>	 <p>JRST Series Worm Gears Size:25-150 Ratio:7.5-100 Input power:0.1-15kW Output torque:2.6-2670N.m</p>
<p>WP WORM GEAR UNITS</p>		<p>WPA Series Worm Gears Size:40-250 Ratio:10-60 Input power:0.12-33.2kW Output torque: 6-6050N.m</p>	 <p>WPS Series Worm Gears Size:40-250 Ratio:10-60 Input power:0.12-33.2kW Output torque: 6-6050N.m</p>
<p>JD THREE PHASE ASYNCHRONOUS MOTORS</p>		<p>JD../E Series IEC Motors Size:63-315 Power:0.12-200kW Efficiency: IE2 & IE3(0.75-200kW)</p>	 <p>JD../P Series Gear Motors Size:63-315 Power:0.12-200kW Efficiency: IE2 & IE3(0.75-200kW)</p>
<p>OPTIONAL DRIVES</p>		<p>JRSS Series Screw Lifter Size: 35-150 Ratio:5-40 Input power: 0.19-16.3kW Lift Capacity: 500-26050Kg</p>	 <p>JRSM Series Spiral Bevel Right Angle Size:2-25 Ratio:1-5 Input power:0.014-335kW Input speed: 10-1450r/min</p>
	<p>JRGC1501 Transfer Case Ratio: 0.589,0.659,0.756,0.825 Max Output Torque (Pump):1390N.m Max Output Torque (Working Shift) :40000N.m</p>	 <p>JRGC1301 Transfer Case Input power:400 kW Single pump power:210kW Single pump maximum torque: 1000N.m Maximum input speed:3500rpm</p>	





**JRTK Series
Helical-Bevel Gearmotors**
Size:37-187
Ratio:3.98-197.37
Input power:0.12-200kW
Output torque:10-62800N.m



**JRTS Series
Helical-Worm Gearmotors**
Size:37-97
Ratio:6.8-288
Input power:0.12-22kW
Output torque:11-4650N.m



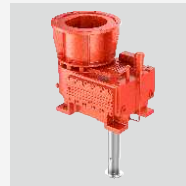
**JCM Frequency
Conversion Gearmotor**
Size:0004-0075
Power:0.37-7.5
Ingress Protection:IP54-IP65
Mains supply:3X380-440VAC
Out frequency :0-200Hz



**JRHD Series
Bucket Elevator Gear Units**
Size:5-16
Ratio:25-71
Input power:16-1305kW
Output torque:
11000-173000N.m



**JROKE Series
Palm Oil Gear Units**
Ratio:56, 80
Input power:106, 141kW
Output torque:75000N.m



**JRHA2SV
Air-Cooled Gear Units**
Size:166
Ratio:14
Input power:228kW
Output torque:21000N.m



**JRPH Series
Planetary Gear Units**
Size: 08-100
Ratio: 3.4-2000
Input power:75-250kW
Output torque:
8000-100000N.m



**JRPG Series Port Equipment
Planetary Gear Units**
Size: 09-30
Ratio: 25-280
Input power:6.2-5970kW
Output torque:
22000-1200000N.m



**JRPN Series
Mixer Planetary Gear Units**
Size:11-13
Ratio:27-100
Input power:30-75kW
Output torque:
12000-83000N.m



**JRSTDB Series
Worm Gears**
Size:25-150
Ratio:7.5-100
Input power:0.06-15kW
Output torque:2.6-2670N.m



**JRST W Series
Worm Gears**
Size:25-150
Ratio:7.5-100
Input power:0.1-15kW
Output torque:2.6-2670N.m



**JRSTD U Series
Worm Gears**
Size:25-150
Ratio:7.5-100
Input power:0.06-15kW
Output torque:2.6-2670N.m



**WPO Series
Worm Gears**
Size:40-250
Ratio:10-60
Input power:0.12-33.2kW
Output torque: 6-6050N.m



**WPX Series
Worm Gears**
Size:40-250
Ratio:10-60
Input power:0.12-33.2kW
Output torque: 6-6050N.m



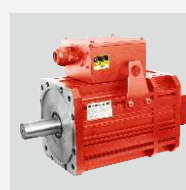
**WPW Series
Worm Gears**
Size:40-250
Ratio:10-60
Input power:0.12-33.2kW
Output torque: 6-6050N.m



**JD./BE Series
Brake Motors**
Size:63-315
Power:0.12-200kW
Efficiency:
IE2 & IE3(0.75-200kW)



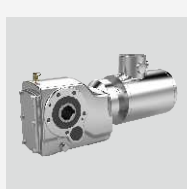
**JDB.. Series
Explosion-Proof Motors**
Size 80-315
Power:0.75-200kW
Explosive-Proof Grade:
Exib II BT4
Efficiency:IE2 & IE3



**JDC Series Servo
Motors**
Size: 01-13
Power:0.5-4.2kW
Rated torque:2-13N.m



**JRESR Series
Stainless Steel Gearmotors**
Size:37-67
Ratio:3.41-199.81
Input power:0.18-7.5kW
Output torque: 112-600N.m



**JRESK Series
Stainless Steel Gearmotors**
Size:37-67
Ratio:3.98-145.14
Input power:0.18-5.5kW
Output torque:125-820N.m



**JRESS Series
Stainless Steel
Worm Gears**
Size:40-63
Ratio:7.5-100
Input power:0.09-4kW
Output torque:19-458N.m



**JEC Series
Escalator Reducer**
Size:2-15, 2-25
Ratio:24.5
Efficiency:≥96%
Working lift:146000h
Output torque: 3530-5150N.m



**JN Series
Agricultural Machinery
Gear Units**
Ratio:0.364-2.33
Input speed:800rpm
Efficiency:≥96%

**Customized Products
Transmission Schemes**
Custom Solutions Available
on Request



JIE Drive, established in 1988, focus on one gear reducer for 100 years, to create the century enterprise with craftsman spirit in the gear industry;
JIE will serve the global market with the total drive solution for Gear reducer, Motor, Inverter and Transmission system, Drive systems. Control systems;
JIE insists on "Specialization, Intelligence, Globalization" Global Development plan and dedicated to intelligent factory, intelligent product, intelligent service.
JIE provides Excellent Product to Excellent Customers !



JIE USA INC.

493 Mission St.
Carol Stream, IL 60188
USA
Tel: +1 630 580-9986
Info@jie-drives.com
www.jie-drives.com