

### PRESSURE

MAX WORKING	8 bar [116 psi]
TESTING	12 bar [175 psi]
BURST	16 bar [230 psi]
ELEMENT COLLAPSE PRESSURE RATING (ISO 2941)	10 bar [145 psi]

### FLOW

MAX FLOW	50 l/min [13 gpm]
----------	-------------------

### MATERIALS

BODY	Conductive nylon
BOWL	Reinforced nylon
SEALS	Buna Viton
END CAPS	Zinc-plated steel
INNER TUBE	Zinc-plated steel

### FILTER MEDIA

MICROFIBER	FG010	10 µm
	FG025	25 µm
ANTISTATIC MICROFIBER	AF010	10 µm
	AF025	25 µm

### OPERATING TEMPERATURE

BUNA	-30 ± 90 °C [-22 ± 195 °F]
VITON	-20 ± 110 °C [-4 ± 230 °F]

### BY-PASS VALVE

ACTIVATION DIFFERENTIAL PRESSURE SETTING	1,7 bar - 3,5 bar [25 psi - 51 psi]
--	--

### FLUIDS COMPATIBILITY - ISO 2943 (N. ISO 6743/4)

MINERAL OILS (1)	HH - HL - HM - HR - HV - HG
WATER EMULSIONS (1)	HFAE - HFAS
GLYCOL WATER (1) (3)	HFC
SYNTHETIC FLUIDS (2)	HS - HFDR - HFDU - HFDS

(1) With Buna seals

(2) With Viton seals

(3) Without zinc-plated elements



### TECHNICAL FEATURES

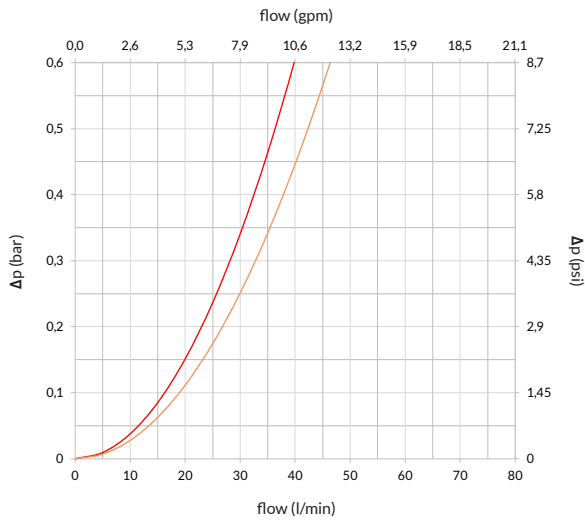
- Tank top filters to protect the circuit return line flows
- 360° adjustable connection
- "AF" microfiber and conductive plastics media to minimize the risk of electric discharges inside the element
- Wide range of accessories and clogging indicators

### APPLICATION FIELDS



## HF532 PRESSURE DROP CURVES

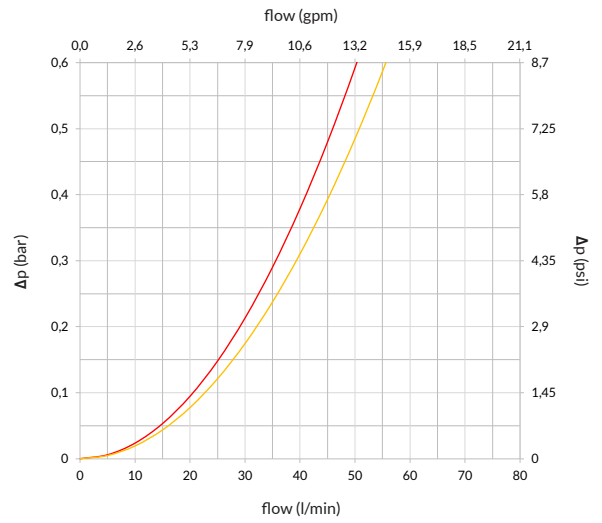
**HF532-10.062**



FG010 / AF010

FG025 / AF025

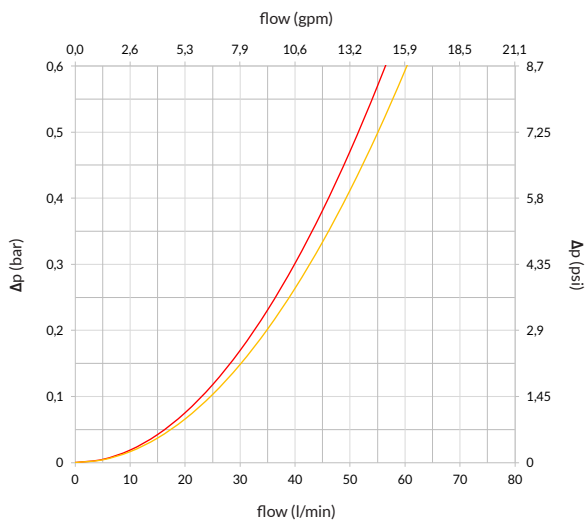
**HF532-10.112**



FG010 / AF010

FG025 / AF025

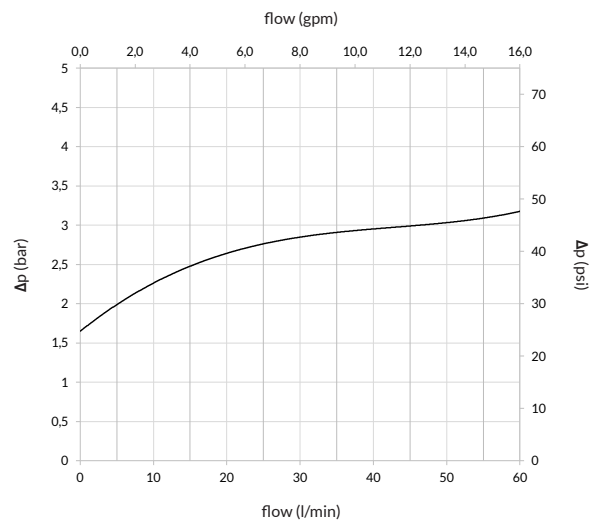
**HF532-10.162**



FG010 / AF010

FG025 / AF025

### BY-PASS VALVE PRESSURE DROP CURVE

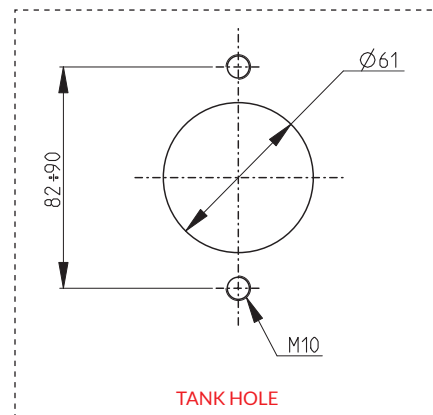
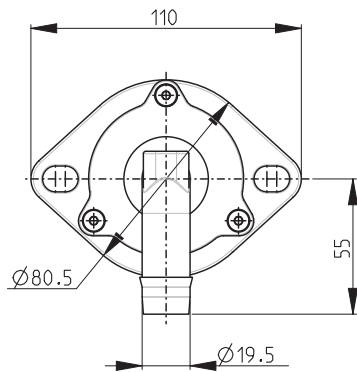
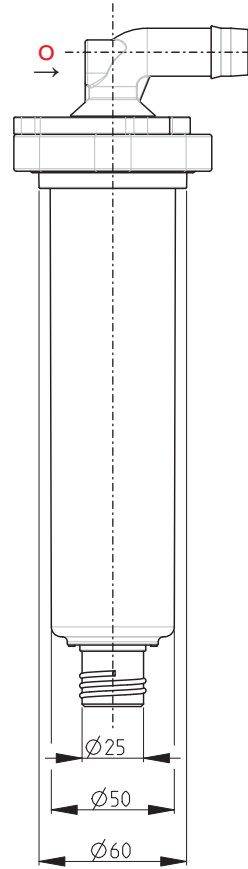
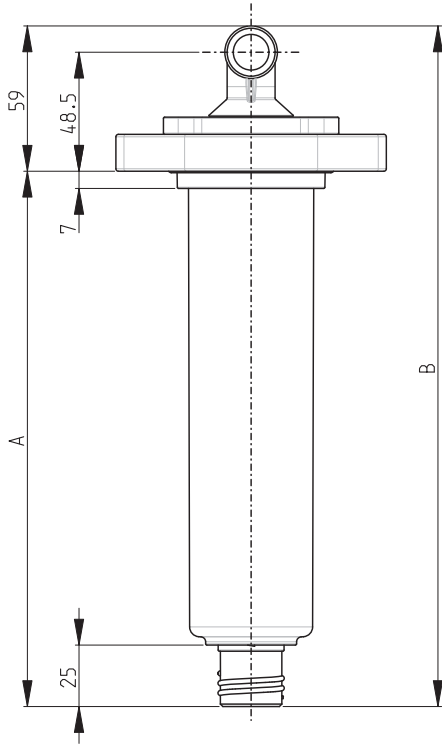


► Curves determined under the following conditions: SAE10 mineral oil - 30 cSt kinematic viscosity - 0,856 kg/dm<sup>3</sup> density

## FLWS CHART

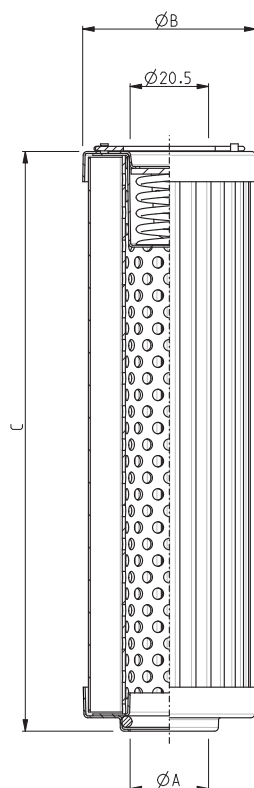
FILTER TYPE	INLET	FILTRATION DEGREE	
	Hose adaptor	FG010 / AF010	FG025 / AF025
	Ø	<i>l/min [gpm] with Δp = 0,4 bar [5,8 psi]</i>	
HF532-10.062	Ø 19,5 mm	33 [8,58]	37 [9,62]
HF532-10.112	Ø 19,5 mm	41 [10,66]	45 [11,70]
HF532-10.162	Ø 19,5 mm	46 [11,96]	50 [13,00]

## HF532 FILTER DIMENSIONS



FILTER TYPE	WEIGHT	A	B	○ INDICATOR PORT
	kg [lb]	mm [in]	mm [in]	
HF532-10.062	0,28 [0.62]	118 [4.72]	176 [7.04]	GAS - BSPP
HF532-10.112	0,33 [0.73]	168 [6.72]	226 [9.04]	G 1/8
HF532-10.162	0,38 [0.84]	218 [8.72]	276 [11.04]	

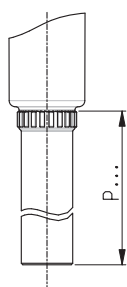
## HEK02 FILTER ELEMENT DIMENSIONS



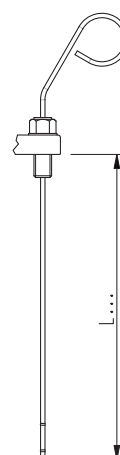
ELEMENT TYPE	WEIGHT	A	B	C
	kg [lb]	mm [in]	mm [in]	mm [in]
HEK02-08.062	0,088 [0.19]			68,5 [2.74]
HEK02-08.112	0,123 [0.27]	20,5 [0.82]	45 [1.80]	118,5 [4.74]
HEK02-08.162	0,158 [0.35]			168,5 [6.74]

## ACCESSORIES

### BOWL EXTENSION



### LEVEL DIPSTICK



► Specify bowl extension and level dipstick length when ordering

## OPERATING INSTRUCTIONS

### ASSEMBLY

After checking the integrity of the filter inside its package, proceed as follows:

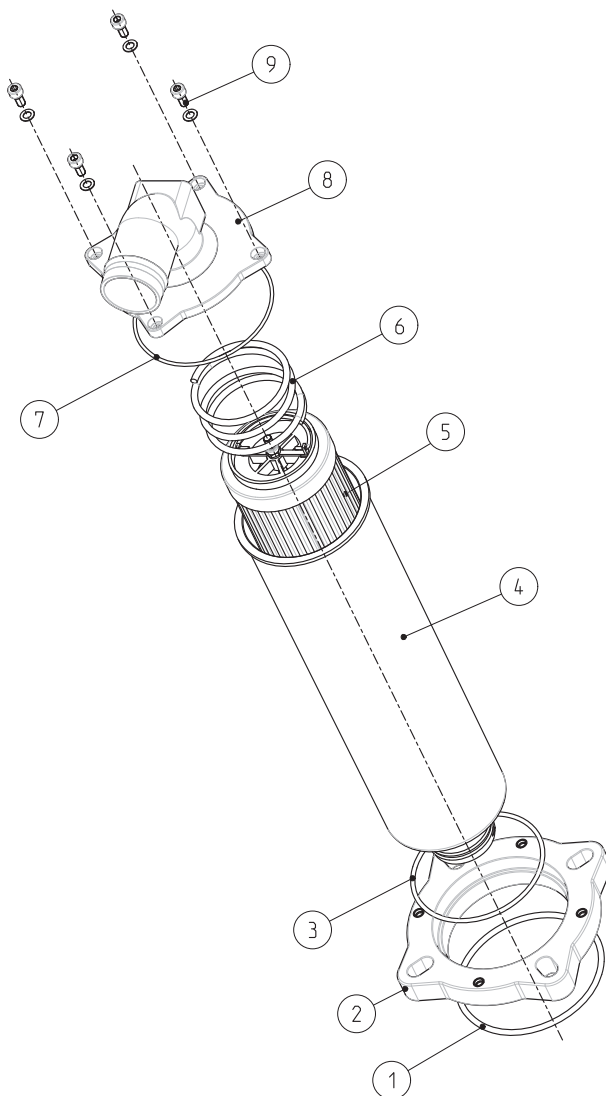
- Take the protection cap off the inlet port.
- Ensure the filter to the tank through the flange holes by using a torque of 5 Nm.
- Connect the circuit return pipes to the inlet port with the appropriate hose clamp.
- If the filter has a clogging indicator, take the protection cap off and screw the indicator into the dedicated seat to a torque of 30 Nm.
- Start the circuit for a few minutes.
- Make sure there are no leaks.

### ELEMENT REPLACEMENT

Proceed as follows:

- Stop the machine.
- Secure any shut-off valves in the hydraulic circuit.
- Unscrew the cover screws and take the closing cap off.
- Remove the clogged element and make sure no residual particles have settled on the bowl bottom.
- Make sure the seals are not damaged, otherwise replace them correctly.
- Insert the new element and lubricate the o-ring beforehand.
- Insert the placement spring in the dedicated seat of the body-cover and screw it at a torque of 5 Nm.
- Re-open any valves and start the machine for a few minutes.
- Make sure there are no leaks.

### EXPLODED VIEW



N.	COMPONENT
1	Fixing flange o-ring
2	Fixing flange
3	Bowl o-ring
4	Bowl
5	Filter element
6	Positioning spring
7	Cover o-ring
8	Body-cover
9	Bowl fixing screws

## BUILD YOUR FILTER

Write here  
↓↓↓

1	HF532	FILTER TYPE		
2		DIMENSION		
	Dimension	10.062	10.112	10.162
3		FILTER SURFACE		
	Standard	AS	AS	AS
4		FILTRATION DEGREE		
	10 [µm] Microfiber	FG010	FG010	FG010
	25 [µm] Microfiber	FG025	FG025	FG025
	10 [µm] Antistatic microfiber	AF010	AF010	AF010
	25 [µm] Antistatic microfiber	AF025	AF025	AF025
5		BY-PASS VALVE		
	1,7 bar setting	B17	B17	B17
	3,5 bar setting	B35	B35	B35
6		INLET		
	Ø 19,5 mm hose adaptor	19,5	19,5	19,5
7		SEALS		
	Buna	B	B	B
	Viton	V	V	V
8		INDICATOR PORTS		
	Without	XN*	XN*	XN*
	Rear	XD**	XD**	XD**
9		INDICATOR THREAD		
	G 1/8"	GA*	GA*	GA*
	G 1/8" plugged	DA*	DA*	DA*
10		INDICATORS*		
	Without	G**	G**	G**
	Rear manometer	M*	M*	M*
	Visual indicator	P*	P*	P*
	Electrical indicator	S*	S*	S*
11		ACCESSORIES		
	Without	K	K	K
	Bowl extension (choose length)	P...	P...	P...
	Level dipstick (choose length)	L...	L...	L...

●, ●, ●: available combinations  
\*: see dedicated catalog

► For special requests please contact our Sales Department.

## BUILD YOUR FILTER ELEMENT

Write here  
↓↓↓

<b>1</b>	<b>HEK02</b>	<b>ELEMENT TYPE</b>		
<b>2</b>		<b>DIMENSION</b>		
	Dimension	08.062	08.112	08.162
<b>3</b>		<b>FILTER SURFACE</b>		
	Standard	AS	AS	AS
<b>4</b>		<b>FILTRATION DEGREE</b>		
	10 [µm] Microfiber	FG010	FG010	FG010
	25 [µm] Microfiber	FG025	FG025	FG025
	10 [µm] Antistatic microfiber	AF010	AF010	AF010
	25 [µm] Antistatic microfiber	AF025	AF025	AF025
<b>5</b>		<b>VERSION</b>		
	With valve and spring	VM <sup>•</sup>	VM <sup>•</sup>	VM <sup>•</sup>
	Without valve and spring	00	00	00
<b>6</b>		<b>BY-PASS VALVE</b>		
	1,7 bar setting	B17 <sup>•</sup>	B17 <sup>•</sup>	B17 <sup>•</sup>
	3,5 bar setting	B35 <sup>•</sup>	B35 <sup>•</sup>	B35 <sup>•</sup>
<b>7</b>		<b>SEALS</b>		
	Buna	B	B	B
	Viton	V	V	V

•: only combination available

► For special requests please contact our Sales Department.









**SUCTION FILTERS**

**HF 410**  
**HF 431/434/437**

**RETURN FILTERS**

**HF 502/508**  
**HF 532**  
**HF 547**  
**HF 554**  
**HF 570/575/578**

**SPIN-ON FILTERS**

**HF 620/625**  
**HF 650**

**MEDIUM AND HIGH PRESSURE FILTERS**

**HF 690**  
**HF 705**  
**HF 710**  
**HF 725**  
**HF 731**  
**HF 735**  
**HF 741**  
**HF 745**  
**HF 749**  
**HF 760**

**HAND PUMPS**

**EP**

**ACCESSORIES**

**HB 02/50/70/110/120**

**AF 105/106**

**HL 91**

**INDICATORI DI INTASAMENTO**

**FLUX OIL IK 15/50**

**R 15/50**



Via C. Prampolini, 2  
43044 Lemignano di Collecchio  
Parma - Italy  
Phone: +39 0521 304911  
info@ikron.it  
[www.ikron.it](http://www.ikron.it)  