



## **SOLUTIONS FOR FORESTRY EQUIPMENT**

**MECHANICAL AND HYDRAULIC COMPONENTS**



Founded in 1969, Canimex remains THE reference in mechanical, hydraulic and electrical power transmission for forestry equipment manufacturers. We stay ahead of market trends through research and development, and let our partners benefit from our expertise with innovative products and procedures.

Our multidisciplinary and experienced team assists you from design to delivery, through quality control, merchandise packaging, storage, material handling, transportation and customs.

As a fine addition, Canimex features personalized shipping preparation and subassembly services for all types of applications. You are assured of the very best results while meeting your deadlines.

# MECHANICAL & HYDRAULIC SOLUTIONS

## FORESTRY APPLICATION



CONVEYING SYSTEM



CARRIAGE



FELLER BUNCHER



LOADER



MOBILE SAWMILL



WINCH ASSIST



WOOD PROCESSING

## MECHANICAL COMPONENTS - FORESTRY



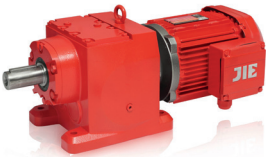
TRACK DRIVE



SLEWING RING



PLANETARY GEARBOX



GEARMOTOR



CHAIN AND SPROCKET

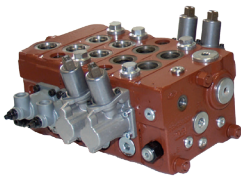


BEARING

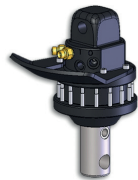
## HYDRAULIC COMPONENTS - FORESTRY



PISTON PUMPS



DIRECTIONAL CONTROL VALVES



ROTATORS



HEAT EXCHANGERS



FILTRATION



HANDLES AND JOYSTICKS

# CANIMEX GROUP IN BRIEF

**50**

Over **50 YEARS** of partnership and innovation

**7**

**7** business **UNITS**

**70**

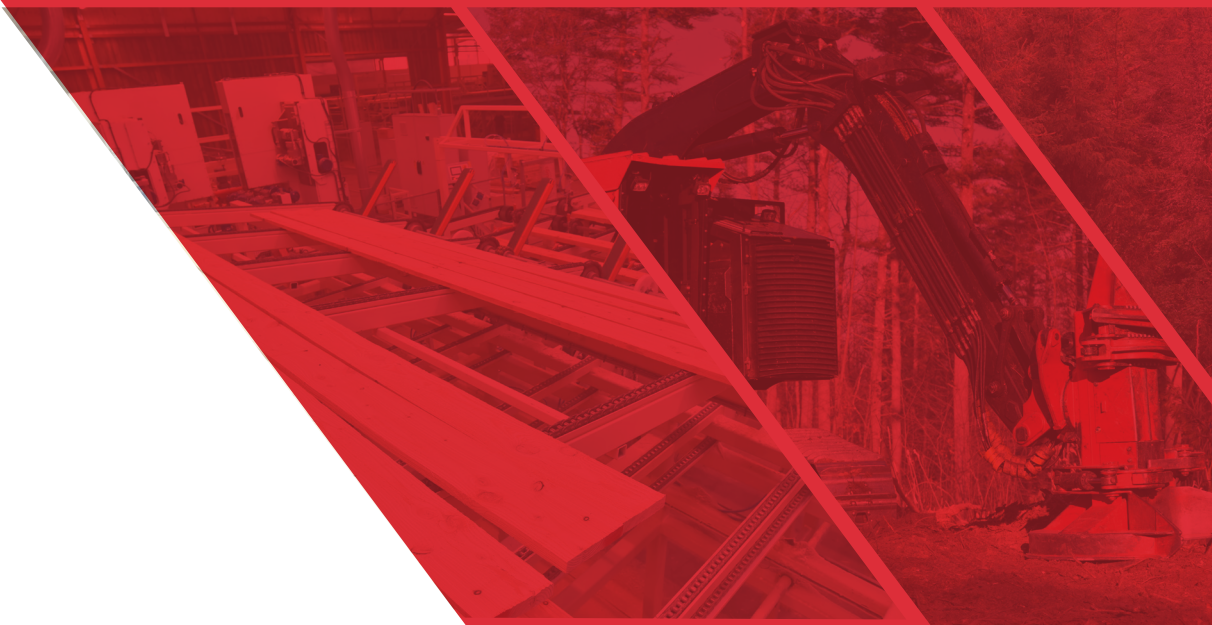
A world leader with a presence in more than **70 COUNTRIES**

**1,600,000**

Production and warehousing facilities in Drummondville totalling more than **1,600,000 SQUARE FEET**

**1969**

A tradition of excellence **SINCE 1969**



285, Saint-Georges, Drummondville, Québec, Canada J2C 4H3  
1-855-777-1335

[canimex.com](http://canimex.com) |   