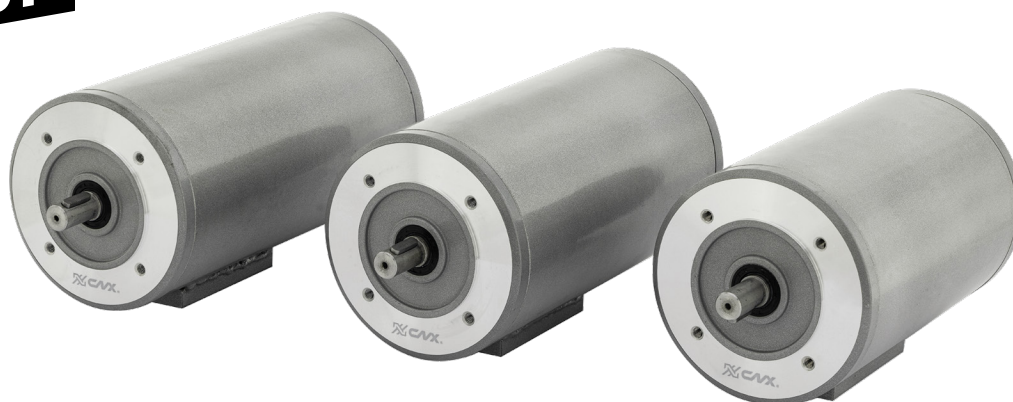


ELECTRIC MOTORS

# CNX 12 VDC MOTORS



**NEW  
PRODUCT**



## MOTOR FOR SPREADERS

- **COST-EFFECTIVE SOLUTION**
- **BUILT FOR WINTER SEASON**
- **COMPACT DESIGN**
- **VIRTUALLY MAINTENANCE-FREE**
- **SHAFTS MADE OF 40CR STEEL ARE MORE RESISTANT, MORE DURABLE**

CNX 12 VDC motors are designed in the North to cope with the worst winter conditions. They are made especially for spreaders.

CA P/N	#248647	#248648	#248649
Power	1/2 HP	3/4 HP	1 HP
Torque	2 Nm	3 Nm	4 Nm
Current	47 A	69 A	95 A
Voltage	12 VDC		
Speed	1750 RPM		
Duty	S2 - 15 min		
Protection	IP54		
Operating temperature	-30°C to 40°C (-22°F to 104°F)		
Insulation class	H		



canimex.com

© CNX is a registered trademark of Canimex Inc.

## WHO ARE WE?

In the snow and ice sector, having the support of a true leader is crucial to make your most ambitious projects a reality. That's why Canimex is the expert you need to help you plan and develop your power transmission projects.

With 55 years of experience in this field, we've gained a passion for bringing this industry's innovations to life. By working with us, you'll benefit from an exceptional level of service.

Contact us today to find out how we can help you reach your objectives and exceed your expectations.

## OUR SOLUTIONS

- Exclusive partnerships in the snow and ice industry
- Solid technical expertise
- Project management team
- Testing capabilities
- High quality standards

## SNOW AND ICE APPLICATIONS



Contact our expert:  
Richard Vachon, [vachonric@canimex.com](mailto:vachonric@canimex.com)

[canimex.com](http://canimex.com) | [f](#) [@](#) [in](#)