

DESIGNED  
BY  
CANIMEX

## SPREADER BLOCK VALVES FOR SNOW REMOVAL

- Tested, tried and proven
- Customized to your hydraulic needs
- Combined with load-sensing valve
- For load-sensing or gear pumps
- For spreader, plow and wings, and dump body
- Comes with built-in main relief
- Standard or high flow
- One block valve for all functions



# SPREADER BLOCK VALVES FOR SNOW REMOVAL

SBV - HSBV

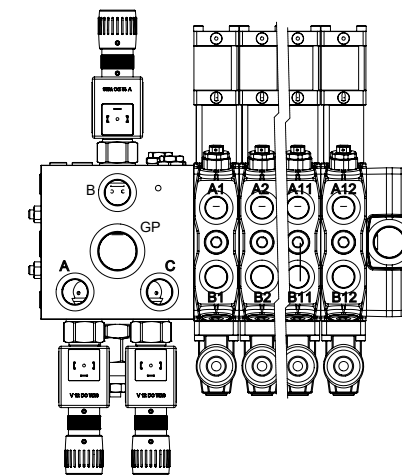
SBV - HSBV			
Maximum flow	Inlet	SBV	32 USgpm (120 lpm)
		HSBV	
	Conveyor A	SBV	0-13 USgpm (0-50 lpm)
		HSBV	0-24 USgpm (0-90 lpm)
	Spinner C	SBV	0-13 USgpm (0-50 lpm)
		HSBV	
	Wet line B	SBV	0-13 USgpm (0-50 lpm)
		HSBV	
	Plow functions	SBV	26 USgpm (100 lpm)
		HSBV	
Maximum pressure	psi		4600
	bar		315
Electrical characteristics	Voltage (V)		12
	Power (W)		15
	Current (A)		1,25
Fluid	Mineral oil (cSt)	SBV and HSBV	20-200
Fluid temperature	°C		-20°/+80°
	°F		-4°/+176°
Contamination level	-		ISO 4406
Material	Manifold		Steel zinc plated
	Internal		Hardened steel
Tie rod tightening torque	lb-ft		22,2
	Nm		30

# SPREADER BLOCK VALVES FOR SNOW REMOVAL

SBV - HSBV

PORTS	THREADS
GP	1-5/16-12 UN (SAE16) PLUGGED
A-B-C	7/8-14 UNF (SAE10)
A1-A12	7/8-14 UNF (SAE10)
B1-B12	7/8-14 UNF (SAE10)
T	1-1/16-12 UN (SAE12)
P	3/4-16 UNF (SAE8) PLUGGED
T1	9/16-18 UNF (SAE6) PLUGGED
T2	7/16-20 UNF (SAE4) PLUGGED
LS	9/16-18 UNF (SAE6)

## SBV - HSBV



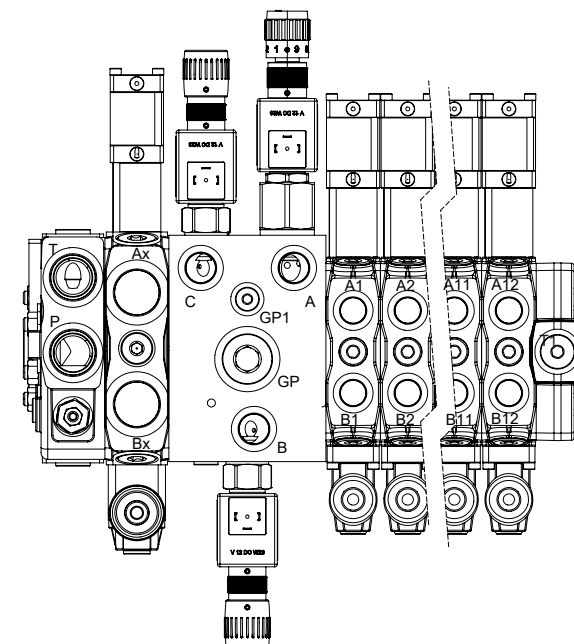
## SPREADER BLOCK VALVES FOR SNOW REMOVAL

## SBVN-HSBVN

SBVN - HSBVN			
Maximum flow	Inlet	SBVN	47 USgpm (180 lpm)
		HSBVN	
	Conveyor A	SBVN	0-13 USgpm (0-50 lpm)
		HSBVN	0-24 USgpm (0-90 lpm)
	Spinner C	SBVN	0-13 USgpm (0-50 lpm)
		HSBVN	
	Wet line B	SBVN	0-13 USgpm (0-50 lpm)
		HSBVN	
	Plow functions	SBVN	26 USgpm (100 lpm)
		HSBVN	
	Hi flow plow functions	SBVN	42 USgpm (160 lpm)
		HSBVN	
Maximum pressure	psi		4600
	bar		315
Electrical characteristics	Voltage (V)		12
	Power (W)		15
	Current (A)		1,25
Fluid	Mineral oil (cSt)		20-200
Fluid temperature	°C	SBVN - HSBVN	-20°/+80°
	°F		-4°/+176°
Contamination level	-		ISO 4406
Material	Manifold		Steel zinc plated
	Internal		Hardened steel
Tie rod tightening torque	lb-ft		22,2
	Nm		30

PORTS	THREADS
GP	1-5/16-12 UN (SAE16) PLUGGED
A-B-C	7/8-14 UNF (SAE10)
A1-A12	7/8-14 UNF (SAE10)
B1-B12	7/8-14 UNF (SAE10)
T	1-5/16-12 UN (SAE16)
P	1-5/16-12 UN (SAE16)
T1	7/8-14 UNF (SAE10)
AX	1-5/16-12 UN (SAE16)
BX	1-5/16-12 UN (SAE16)
GP1	9/16-18 UNF (SAE6) PLUGGED
LS	9/16-18 UNF (SAE6)

## SBVN-HSBVN



# INTEGRATED HYDRAULIC CIRCUIT BLOCKS



# INTEGRATED HYDRAULIC CIRCUIT BLOCKS

## DCG SERIES



### DCG SERIES

- Offered in aluminum, cast iron and steel
- NFPA D03, D05, D07 and D08
- Parallel circuit of up to 10 stations
- Configurable with any modular valve
- Incorporated relief and unloader valve available

## CX SERIES



### CX SERIES

Integrated hydraulic circuit blocks provide important advantages in terms of functionality, rationality, maintenance and compactness. They also offer considerable cost reductions and fewer external connections.

These are mainly used in mobile equipment for agriculture, snow and ice removal, and construction. Machined from aluminum or steel, they include and combine screw-in cartridges, flanged directional solenoid or manual control valves and filters.

Designed by our engineering team to meet your specific needs and exceed your requirements, our blocks will greatly enhance your machine.



BECAUSE EVERY INDUSTRY AIMS FOR EXCELLENCE

