

REDUCERS

- Modular design available
- Very efficient
- Compact
- Innovative
- Cast iron and aluminum available

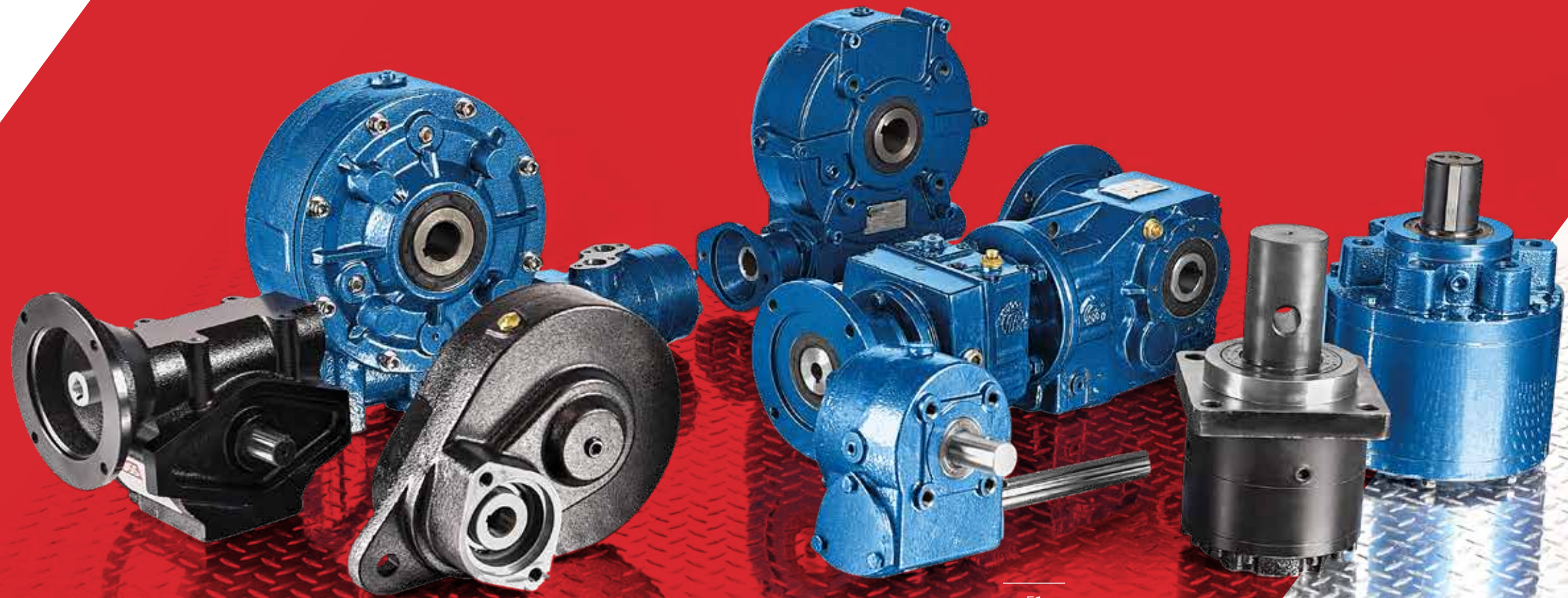


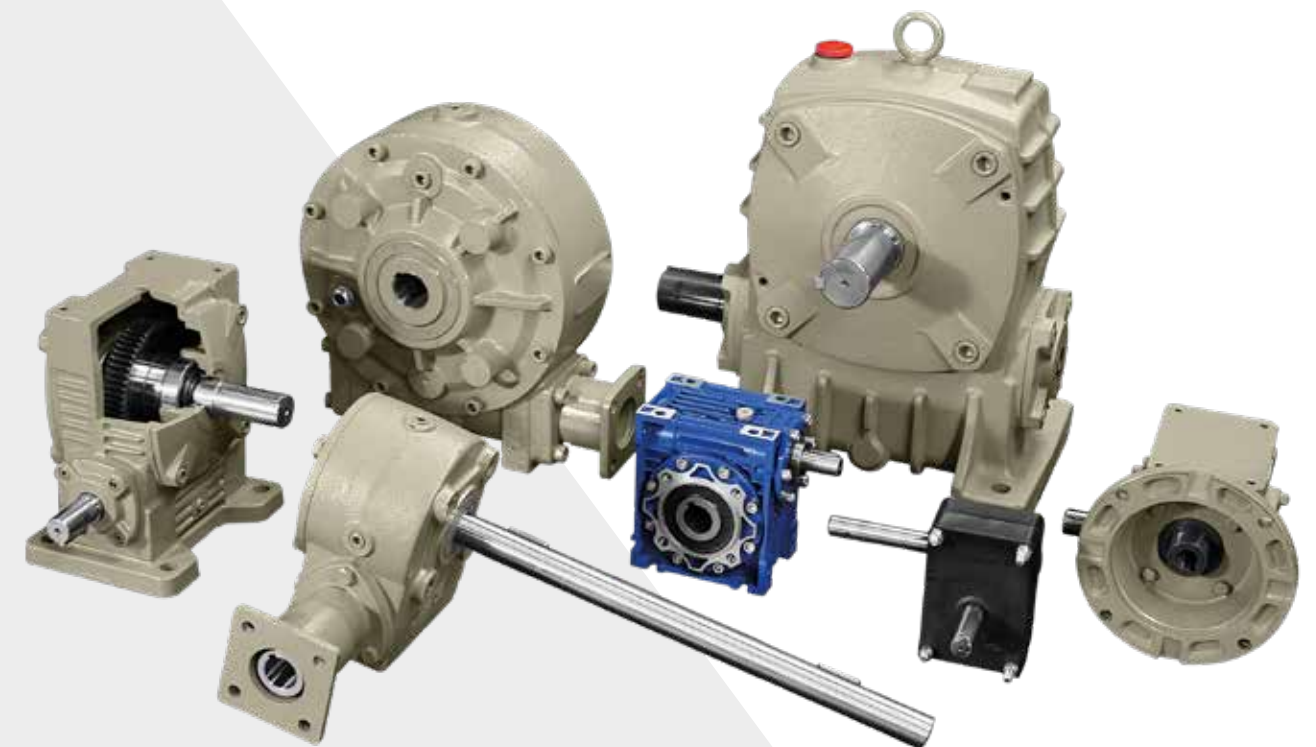
TABLE OF CONTENTS

WORM GEAR REDUCERS

C/CC series	54
UD series – Canimex foot-mounted worm gear	56
CF/CFC series – Canimex imperial worm gear	58
CMR/CCMR series – Universal worm gear reducers	61
P40 – Nylon worm gear reducer	63
C/CC131.3 series – Canimex worm gear	66
CK/CCK67.7 series – Canimex worm gear	67

WORM GEAR REDUCERS

- Universal, modular and imperial designs
- Available in cast iron and aluminum
- Ratios from 10:1 to 1500:1
- Output torque from 20 to 1100 Nm
- 40 to 100 C/CC series model
- 100 to 375 C/CFC series model
- 125 to 175 UD series model
- 40 to 150 CMR/CCMR series model
- P40 series model



WORM GEAR REDUCERS

C/CC SERIES – PERFORMANCE AT 1800 RPM



Model size	Ratio*	Input power	Output torque	Overhung load	Applications
CC mm	I	HP	lb-in	lb	
40	10	0.83	225.7	154.3	
	15	0.7	260.5	154.3	
	20	0.38	3182.3	154.3	
	30	0.43	286.5	154.3	
	40	0.26	217.0	154.3	
	50	0.25	243.1	154.3	
	60	0.2	208.4	154.3	
50	10	1.44	398.5	220.4	
	15	1.07	424.5	253.5	
	20	0.65	334.3	286.5	
	30	0.68	471.4	330.6	
	40	0.44	390.7	374.7	
	50	0.39	395.0	440.8	
60	10	2.32	645.9	216.0	
	15	1.72	686.7	255.7	
	20	1.21	620.8	304.2	
	30	1.14	808.3	332.8	
	40	0.82	718.0	392.3	
	50	0.77	842.1	440.8	
70	10	3.48	1380.4	282.1	
	15	2.53	1449.9	337.2	
	20	1.93	1311.0	392.3	
	30	1.69	1719.0	436.4	
	40	1.24	1519.3	513.5	
	50	1.12	1745.1	586.3	
80	10	4.93	972.4	397	
	15	3.57	1015.8	474	
	20	2.53	1015.8	558	
	30	2.38	1198.1	611	
	40	1.7	1137.3	719	
	50	1.57	1241.5	802	
100	10	8.73	2474.3	368.1	
	15	6.34	2595.9	449.6	
	20	5.02	2708.7	526.8	
	30	4.2	3108.1	584.1	
	40	3.17	3047.3	696.5	
	50	2.39	2761	802	
60	1.96	2639	882		

- Motorized carts
- Conveyors
- Bale choppers
- Silo unloaders
- Compressors
- Granulators
- Manure applications
- Barrier arms
- Sliding barriers
- Swing gates
- ...

*RHP available to achieve higher ratios

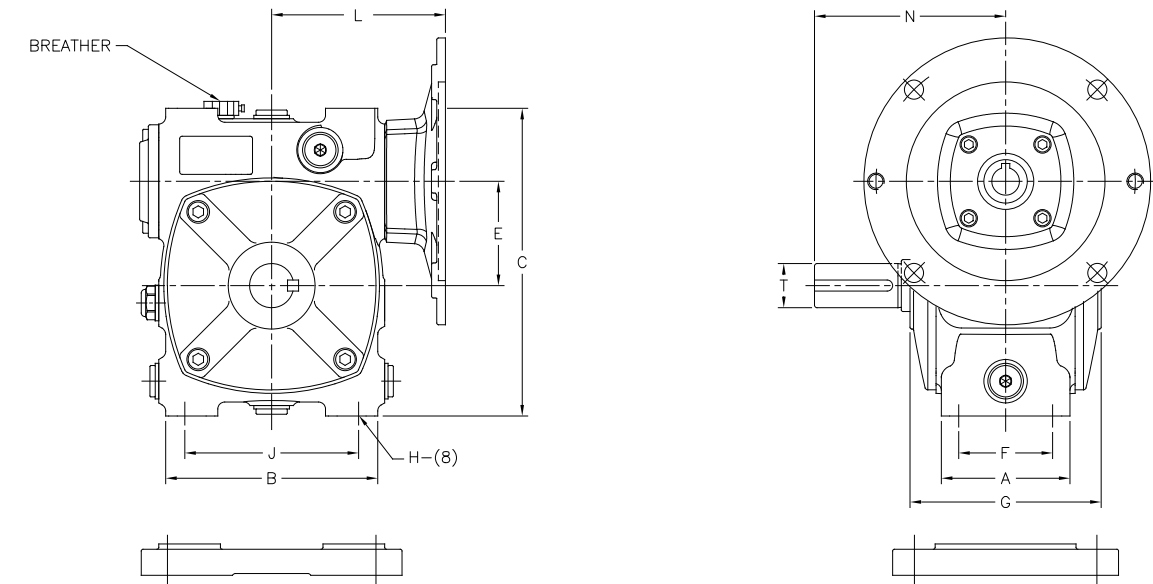
WORM GEAR REDUCERS

C/CC SERIES – DIMENSIONS

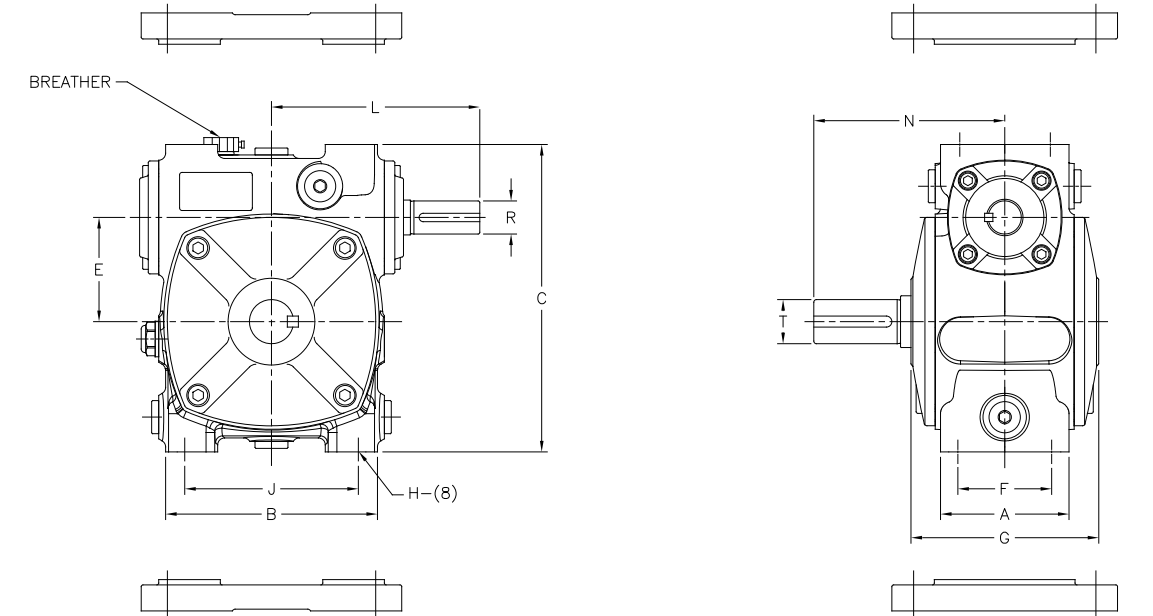


C/CC series	Dimensions (in)												Input flange LQ			Weight	
	A	B	C	E	F	G	J	R	H	L	N	T	56C	143TC	182TC	lb	
													145TC	184TC	C	CC	
40	2.68	4.21	5.00	1.58	2.13	2.795	3.15	0.50	M8	3.78	3.31	0.63	3.48	N/A	N/A	9.0	11.0
50	2.60	4.33	5.91	1.97	1.97	3.86	3.54	0.63	M8	4.15	3.74	0.75	3.74	N/A	N/A	10.3	12.7
60	2.91	4.80	6.97	2.36	2.13	4.33	3.94	0.75	M10	4.72	4.33	1.00	3.94	3.94	N/A	15.2	15.6
70	3.43	6.10	8.07	2.76	2.60	5.04	4.92	0.88	M10	5.51	5.12	1.13	4.72	4.72	4.72	26.2	28.6
80	3.74	6.69	9.13	3.15	2.95	5.43	5.71	1.13	M10	6.30	5.51	1.38	5.08	5.08	5.08	35.2	39.6
100	4.41	8.66	11.42	3.94	3.35	6.54	7.28	1.38	M12	7.48	6.69	1.50	6.50	6.50	6.50	77.0	79.2

CC



C



WORM GEAR REDUCERS

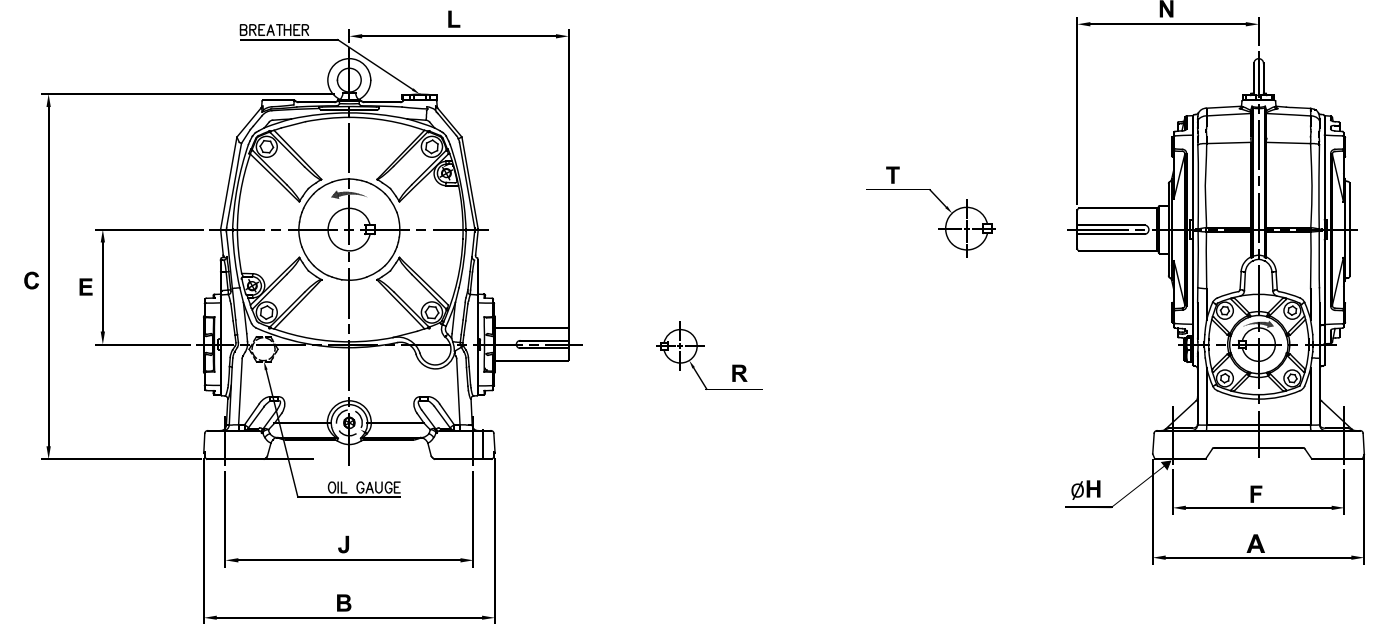
UD SERIES – CANIMEX FOOT-MOUNTED WORM GEAR – PERFORMANCE AT 1800 RPM

Model size	Ratio	Input power	Output torque	Overhung load	Applications
CC mm	I	HP	In-lb	lb	
120	10	13.8	3967.6	390.1	Motorized carts Conveyors Bale choppers Silo unloaders Compressors Granulators Manure applications Barrier arms Sliding barriers Swing gates ...
	15	10	4167.3	480.5	
	20	7.16	3820.0	595.1	
	30	6.66	4992.1	628.1	
	40	4.68	4401.7	786.8	
	50	3.93	4731.6	890.4	
	60	3.14	4245.4	998.4	
135	10	19.8	5730.0	670.0	
	15	14.7	6198.8	797.8	
	20	11.3	6294.3	938.9	
	30	9.68	7466.4	1031.5	
	40	6.98	7014.9	1247.5	
	50	5.28	6441.9	1432.6	
155	60	4.15	5816.8	1595.7	
	10	32.9	9916	3304	
	15	22.9	9204	3304	
	20	14.9	9250	3304	
	30	13.3	9736	3304	
	40	9.32	9205	3304	
175	50	7.13	8595	3304	
	60	5.85	8275	3304	
	10	46.8	13020	3969	
	15	33.0	13373	3969	
	20	22.8	12240	3969	
	30	19.0	14161.2	3969	
175	40	13.2	12940	3969	
	50	9.78	11719	3969	
	60	8.23	11461	3969	

WORM GEAR REDUCERS

UD SERIES – CANIMEX FOOT-MOUNTED WORM GEAR – PERFORMANCE AT 1800 RPM

UD series	Dimensions (in)											Weight
	A	B	C	E	F	J	R	H	L	N	T	lb
120	8.74	12	15	4.72	7.1	10.24	1.37	0.71	9.06	7.48	1.75	99
135	9.45	13.2	16.7	5.31	7.87	11.4	1.63	0.71	10.24	8.27	2.25	143
155	10.47	14.57	18.46	6.1	8.66	12.6	1.63	0.79	11.89	9.92	2.5	198
175	11.65	15.75	21.1	6.9	9.84	13.78	1.88	0.83	12.8	10.3	2.75	320



WORM GEAR REDUCERS

CF/CFC SERIES – CANIMEX IMPERIAL WORM GEAR – PERFORMANCE AT 1750 RPM



Model size	Ratio	Input power	Output torque	Overhung load	Applications
1/100 inch	I	HP	In-lb	lb	
1.33	5	1.249	202	300	
	7.5	0.910	216	300	
	10	0.699	216	300	
	15	0.543	228	300	
	20	0.414	230	300	
	25	0.350	231	300	
	30	0.334	234	300	
	40	0.262	242	300	
	50	0.204	216	300	
	60	0.180	202	300	
	80	0.121	186	300	
100	0.085	147	300		
1.54	5	1.706	275	500	Motorized carts Conveyors Bale choppers Silo unloaders Compressors Granulators Manure applications Barrier arms Sliding barriers Swing gates ...
	7.5	1.300	309	500	
	10	0.984	305	500	
	15	0.725	315	500	
	20	0.586	326	500	
	25	0.483	323	500	
	30	0.437	323	500	
	40	0.349	322	500	
	50	0.287	311	500	
	60	0.257	323	500	
	80	0.180	289	500	
100	0.121	230	500		
1.75	5	1.928	314	700	
	7.5	1.75	416	700	
	10	1.30	406	700	
	15	0.910	403	700	
	20	0.81	455	700	
	25	0.662	441	700	
	30	0.543	414	700	
	40	0.47	442	700	
	50	0.396	417	700	
	60	0.30	397	700	
	80	0.213	353	700	
100	0.14	281	700		
2.06	5	3.30	542	700	
	7.5	2.46	594	700	
	10	1.96	624	700	
	15	1.41	643	700	
	20	1.16	683	700	
	25	0.96	672	700	
	30	0.82	663	700	
	40	0.67	675	700	
	50	0.55	636	700	
	60	0.46	627	700	
	80	0.29	494	700	
100	0.20	397	700		

WORM GEAR REDUCERS

CF/CFC SERIES – CANIMEX IMPERIAL WORM GEAR – PERFORMANCE AT 1750 RPM

Model size	Ratio	Input power	Output torque	Overhung load	Applications
1/100 inch	I	HP	In-lb	lb	
2.38	5	3.962	653	920	
	7.5	3.65	867	920	
	10	2.80	894	920	
	15	2.07	953	920	
	20	1.68	987	920	
	25	1.40	992	920	
	30	1.19	970	920	
	40	0.98	984	920	
	50	0.81	955	920	
	60	0.63	881	920	
	80	0.42	747	920	
100	0.28	583	920		
2.62	5	5.37	887	1030	Motorized carts Conveyors Bale choppers Silo unloaders Compressors Granulators Manure applications Barrier arms Sliding barriers Swing gates ...
	7.5	4.66	1108	1030	
	10	3.43	1105	1030	
	15	2.43	1142	1030	
	20	2.16	1288	1030	
	25	1.77	1301	1030	
	30	1.46	1239	1030	
	40	1.23	1279	1030	
	50	1.10	1257	1030	
	60	0.84	1188	1030	
	80	0.54	975	1030	
100	0.34	747	1030		
3.00	5	6.79	1130	1300	
	7.5	6.40	1521	1300	
	10	4.98	1787	1300	
	15	3.82	2011	1300	
	20	2.94	1991	1300	
	25	2.51	2096	1300	
	30	1.46	1239	1300	
	40	1.23	1279	1300	
	50	1.10	1257	1300	
	60	0.84	1188	1300	
	80	0.54	975	1300	
100	0.34	747	1300		
3.25	5	16.26	2725	1350	
	7.5	14.40	3414	1350	
	10	11.39	3715	1350	
	15	8.33	3970	1350	
	20	6.69	4086	1350	
	25	5.58	4147	1350	
	30	2.81	2403	1350	
	40	2.30	2471	1350	
	50	1.93	2406	1350	
	60	1.54	2331	1350	
	80	1.02	1903	1350	
100	0.69	1510	1350		

REDUCERS

REDUCERS

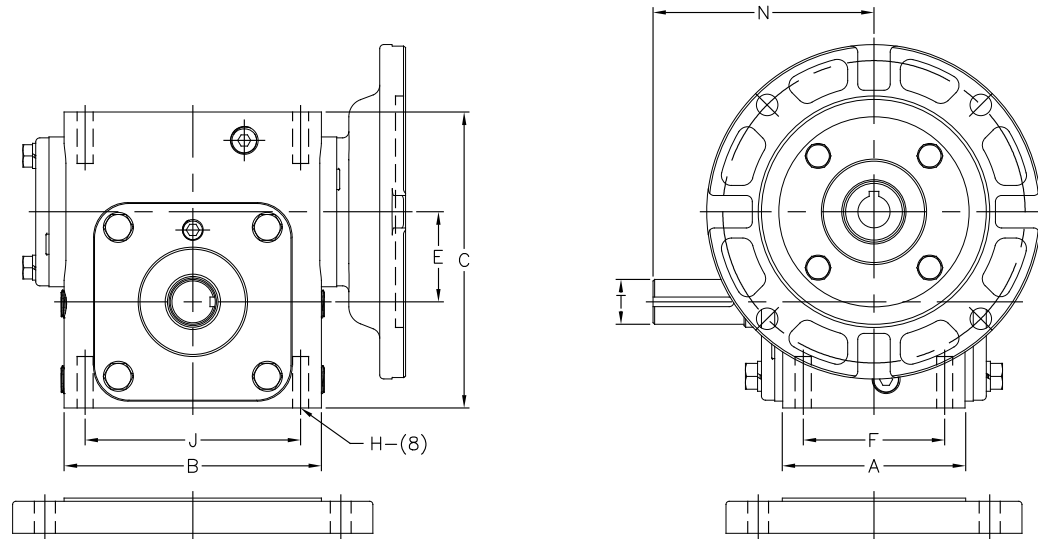
WORM GEAR REDUCERS

CF/CFC SERIES – CANIMEX IMPERIAL WORM GEAR – DIMENSIONS

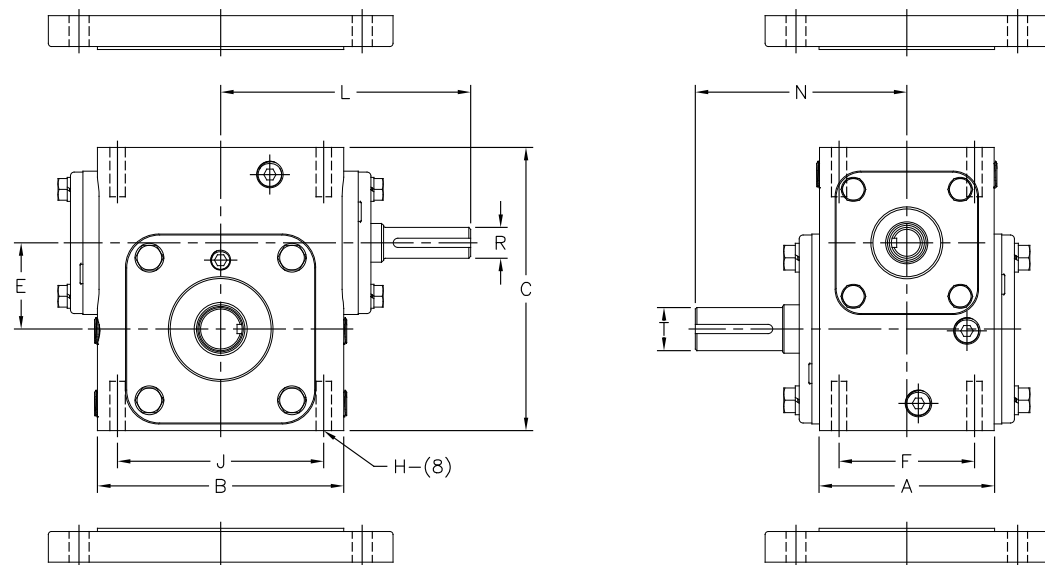


Model size CF	Dimensions (in)											Input flange LQ			Weight	
												56C	143TC	182TC	lb	
	A	B	C	E	F	J	R	H	L	N	T	145TC	184TC	CF	CFC	
133	2.88	4.25	4.64	1.33	2.00	3.25	0.50	5/16-18	3.91	4.00	0.625	3.94	3.94	N/A	11.0	12.0
154	3.69	5.13	5.38	1.54	2.75	4.19	0.625	5/16-18	4.69	4.31	0.75	4.50	4.50	N/A	18.0	18.0
175	3.69	5.50	5.75	1.75	2.75	4.19	0.625	5/16-18	4.88	4.31	0.875	4.69	4.69	N/A	20.0	20.0
206	3.81	6.00	6.38	2.06	2.88	5.00	0.625	3/8-16	5.13	4.69	1.00	5.06	5.06	N/A	25.0	25.0
238	4.06	6.38	6.94	2.38	2.88	5.00	0.75	3/8-16	5.75	5.09	1.125	5.25	5.25	5.69	31.0	31.0
262	4.44	7.38	8	2.625	3.38	6.38	0.75	3/8-16	6.31	5.63	1.125	5.75	5.75	6.19	43.0	46.0
325	5.88	9	9.38	3.25	4	7.5	0.875	7/16-14	7.44	7.06	1.375	6.56	6.56	7	72.0	84.0
375	6.38	10	10.44	3.75	4.75	8.5	1	1/2-16	8.38	7.75	1.625	7.06	7.06	7.5	105.0	117.0

CFC



CF



WORM GEAR REDUCERS

CMR/CCMR SERIES – UNIVERSAL WORM GEAR REDUCERS – PERFORMANCE AT 1750 RPM



Model	Output torque	Ratio	Input power	Overhung load	Applications
25-150	2.6– 2670 Nm 23-23631 lb-in	7.5-100	0.08-20 hp 0.06-15 kW	35-630 lb	<ul style="list-style-type: none"> Motorized carts Conveyors Bale choppers Silo unloaders Compressors Granulators Manure applications Barrier arms Sliding barriers Swing gates ...

Models 25-90: aluminum housing
Models 110-150: cast iron housing

Double and helical worms available for all sizes.
Output flanges, torque arms and foot mounts available for all sizes.
Male output shaft available in metric and imperial sizes.
Nema and IEC input flanges available for all sizes.

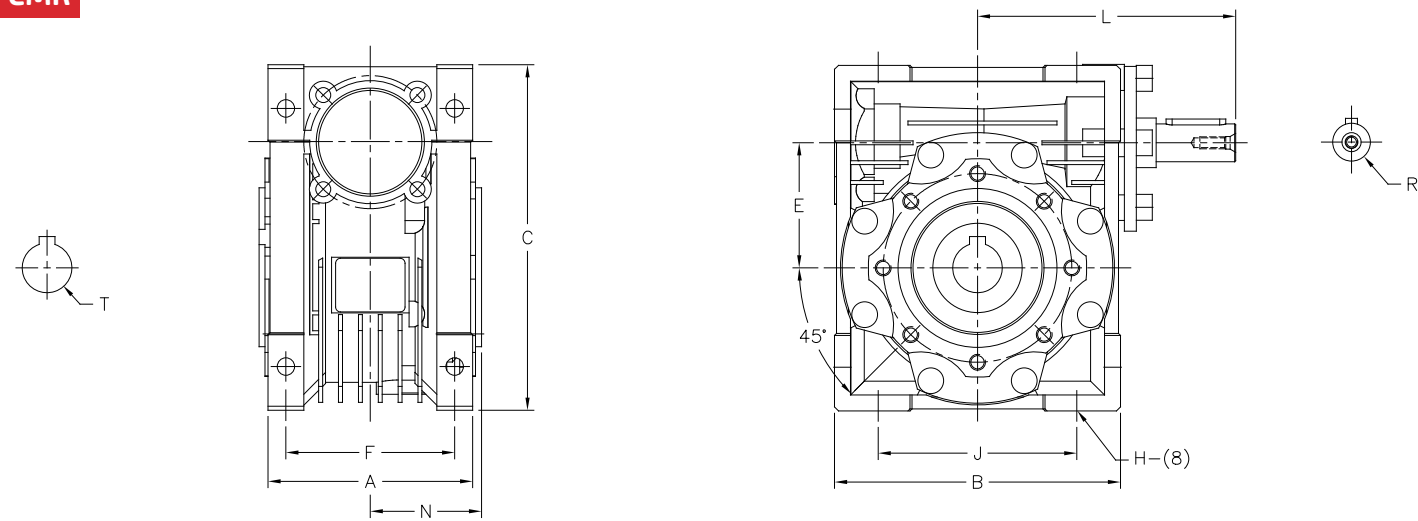
WORM GEAR REDUCERS

CMR/CCMR SERIES – UNIVERSAL WORM GEAR REDUCERS – DIMENSIONS

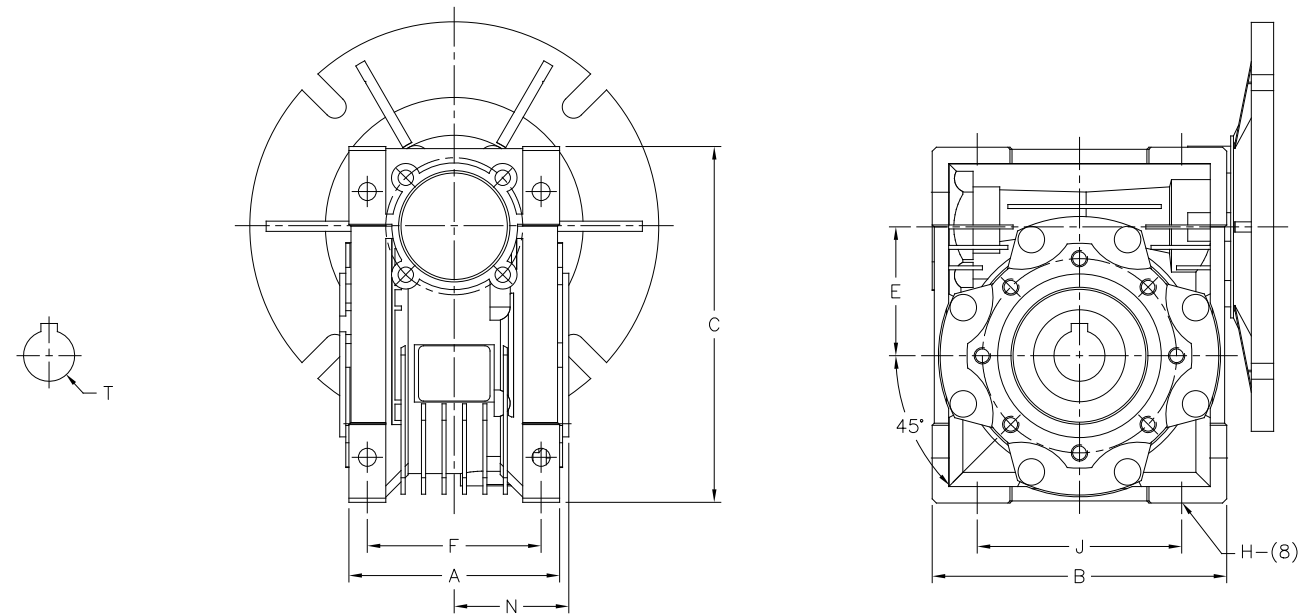


CMR model	Dimensions (mm)												Input flange LQ NEMA (mm)						Weight lb
	A	B	C	E	F	J	R	H	L	N	T	63	71	80	90	100	112	132	
40	71	100	121.5	40	60	70	11	6.5	162	39	18	71	71	-	-	-	-	-	2.1
50	85	120	144	50	70	80	14	8.5	110.5	46	25	80	80	-	-	-	-	-	3.5
63	103	144	174	63	85	100	18	8.5	235	56	25	-	95	95	95	-	-	-	6.0
75	112	172	205	75	90	120	24	11.5	526	60	28	-	-	112.5	112.5	112.5	112.5	-	9.0
90	130	206	238	90	100	140	24	13	694	70	35	-	-	130	130	130	130	-	14.0
110	144	255	295	110	115	170	28	14	668	78	42	-	-	-	160	160	160	160	35

CMR



CCMR



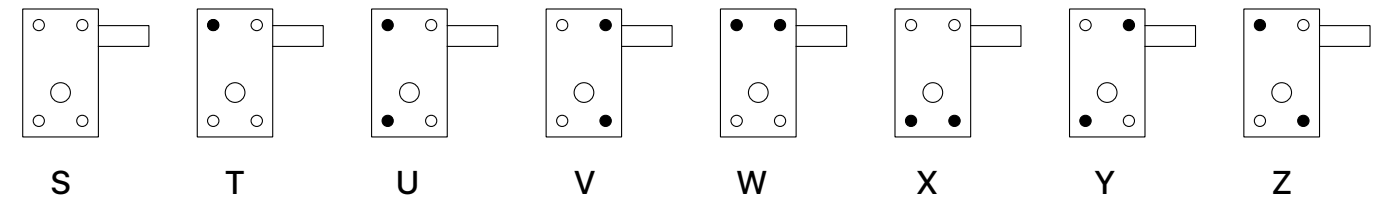
WORM GEAR REDUCERS

P40 – NYLON WORM GEAR REDUCER



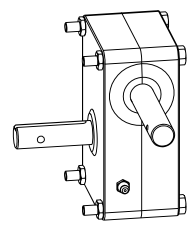
Maximum input speed	Maximum output torque (dynamic)	Maximum output torque (static)
RPM	In-lb	In-lb
50 to 100	500	800

Bolt sizes, lengths and positions				Applications
With base		Without base		
2 x 1/4 - 28 UNF - 2 1/2" long, zinc-plated	2 x 1/4 - 28 UNF - 2 3/4" (or 3") long, zinc-plated	2 or 4 x 1/4 - 28 UNF - 2 1/2" long, zinc-plated	2 or 4 x 1/4 - 28 UNF - 2 3/4" (or 3") long, zinc-plated	Equipment in greenhouses: Heating and cooling systems Ventilation Climate control

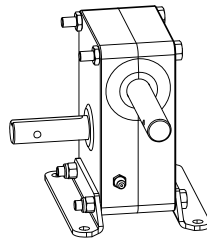


WORM GEAR REDUCERS

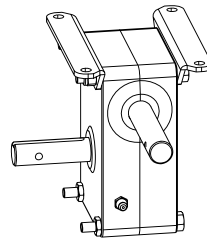
P40 – NYLON WORM GEAR REDUCER – MOUNTING



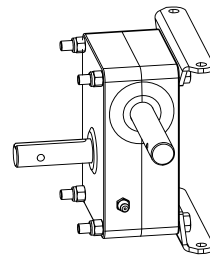
A



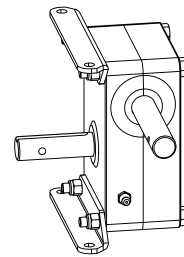
B



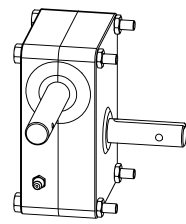
C



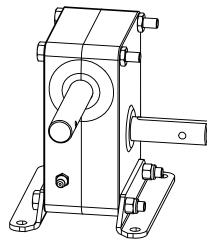
D



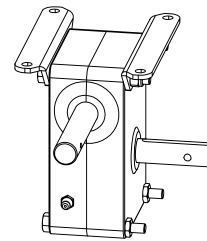
E



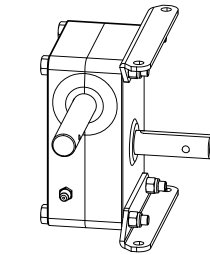
F



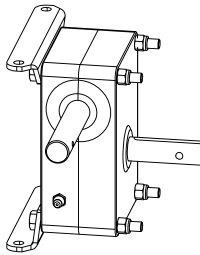
G



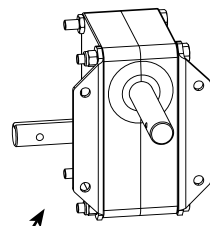
H



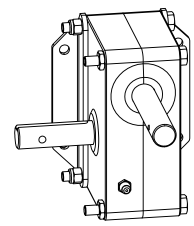
I



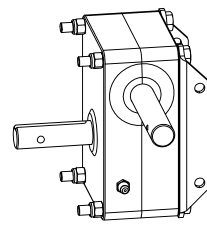
J



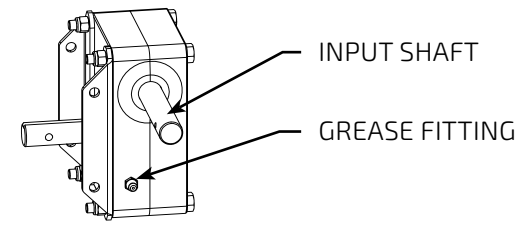
K



L

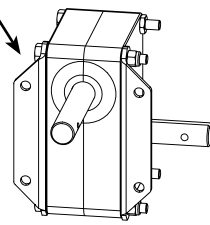


M

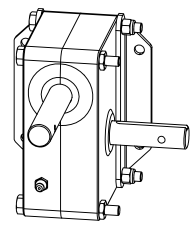


N

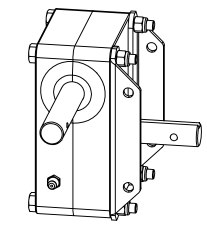
GREASE FITTING ON BACK



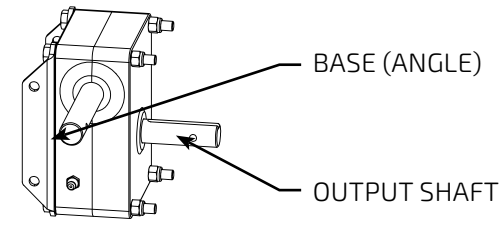
O



P



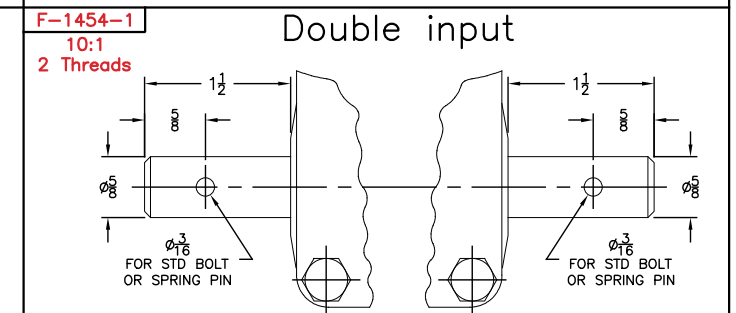
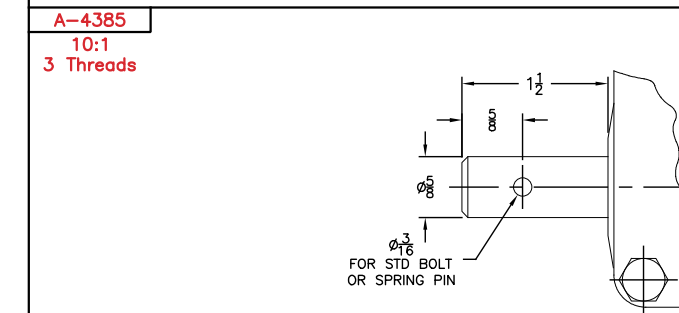
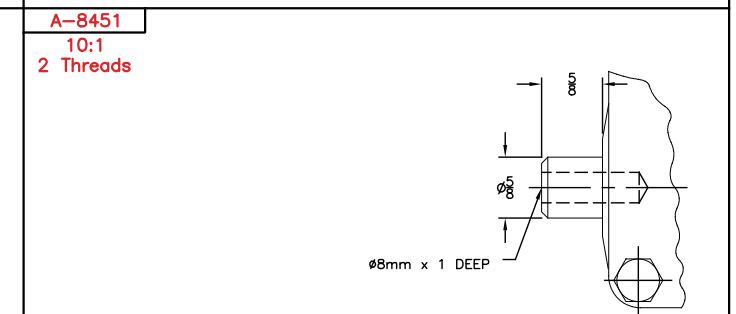
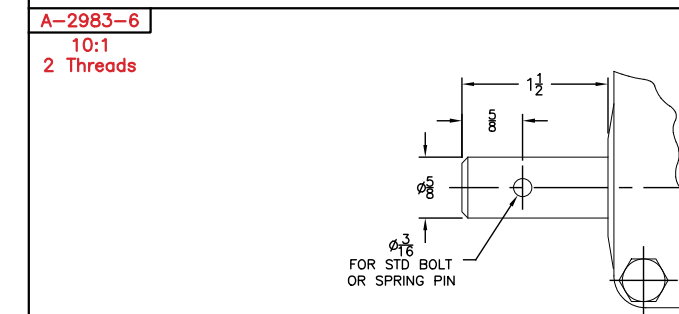
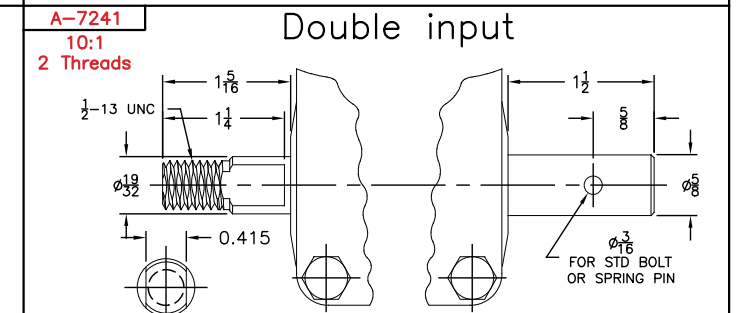
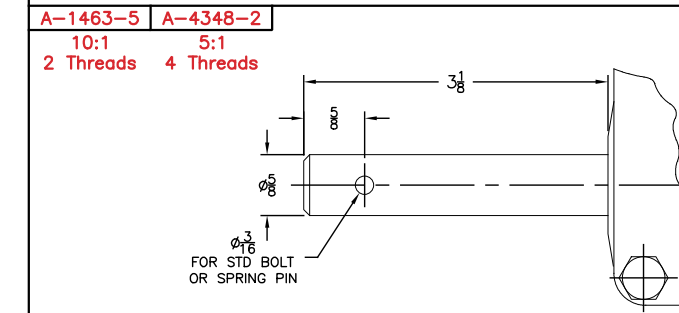
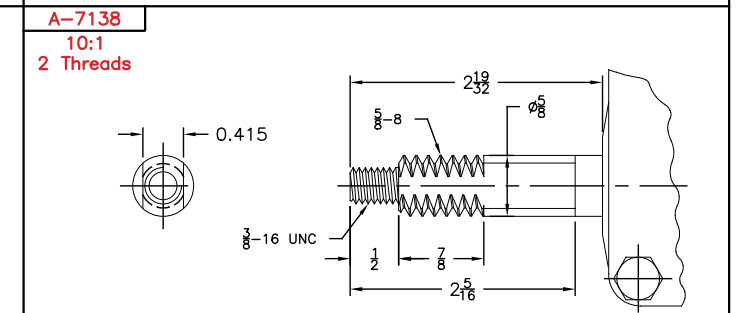
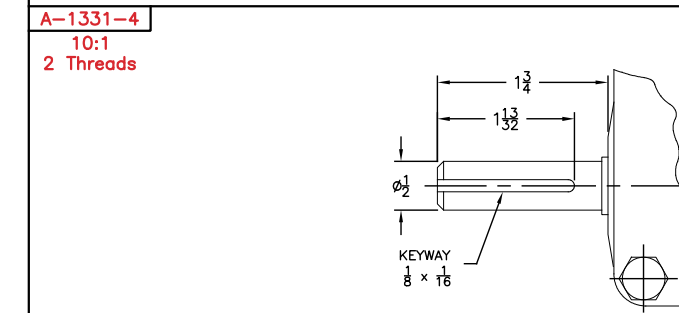
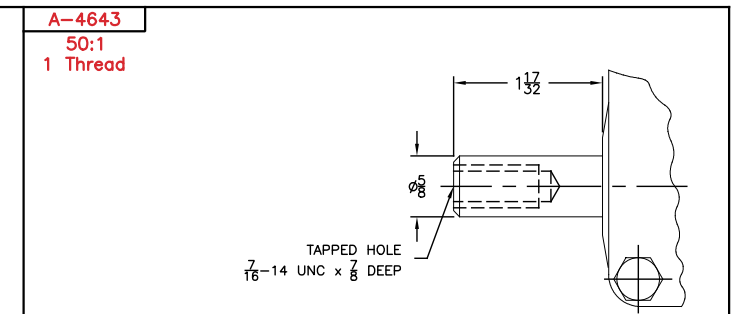
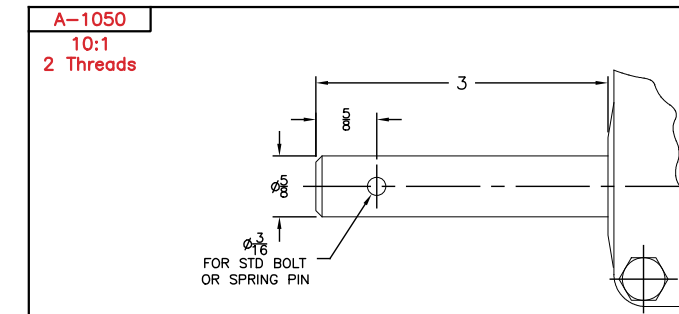
Q



R

WORM GEAR REDUCERS

P40 – NYLON WORM GEAR REDUCER – INPUT SHAFT DIMENSIONS



REDUCERS

REDUCERS

WORM GEAR REDUCERS

C/CC131.3 SERIES – CANIMEX WORM GEAR – PERFORMANCE AT 1750 RPM



Model size	Center distance	Ratio	Input power	Output torque	Overhung load	Applications
	mm	I	HP	lb-in	lb	
131	131	25:1	7.94	6221	N/A	Snow and ice
		50:1	4.44	6233	N/A	Salt spreader

C/CC131.3							
Ratio	Input	Extended input		Output			
	SAE A flange	Dia.	Length		Dia.	Length	
25	2-bolt flange				11/4	Hollow	
	4-bolt flange				11/2	Hollow 28 1/2 26 1/2	
	4-bolt flange	1	1/2 7/8 11/2	5/8 1 4	13/4	Hollow	29 5/8
		1			2	Hollow 28 1/2	3 1/2 29 5/8
50	2-bolt flange	1	4		11/2	26 3/8 28 1/2	
	4-bolt flange	1	5/8	11/2	13/4	Hollow	
							1
		1					

Dimensions are in inches.

Customized shafts available with large volume orders.

WORM GEAR REDUCERS

CK/CCK67.7 SERIES – CANIMEX WORM GEAR – PERFORMANCE AT 1750 RPM



Model size	Centre distance	Ratio	Input power	Output torque	Overhung load	Applications
	mm	I	HP	lb-in	lb	
67.7	67.7	5	5.26	882	N/A	Snow and ice Salt spreader
		10	3.18	1000		
		20	1.93	1085		
		50	1.04	1154		

Ratio	Standard Canimex shaft sizes											
	CK67.7					CCK67.7						
	Input		Output		Input	Extended input		Output				
	Dia.	Length	Dia.	Length	SAE A flange	Dia.	Length	Dia.	Length			
5	1 1/4	15 1/8	15 7/8	11/4	28 5/8	4-bolt flange	1	2	11/4	6		
10				1		4-bolt flange	1	2	1	15		
						4-bolt flange			11/4	2 5/8		
20	1	5 1/2 7 1/2 7 7/8 8 3/4	6 1/2 7 3/4 8 10 3/4	11/8	14 3/8 18 1/8 18 1/2	4-bolt flange	1	2	1	19 7/8		
						4-bolt flange			11/8	2		
											17	17 1/4
											11/4	18
						1	15	15 1/2				
50	1	2 6 1/2	3 3/4 8 3/4	11/8	14 1/2	18 1/8						
				11/4	14 19 3/4	18 1/4						