

GEARBOXES

- Full engineering support
- High inventory
- Innovative and highly efficient designs
- Designs adapted to specific applications
- Customized test bench
- Many options available

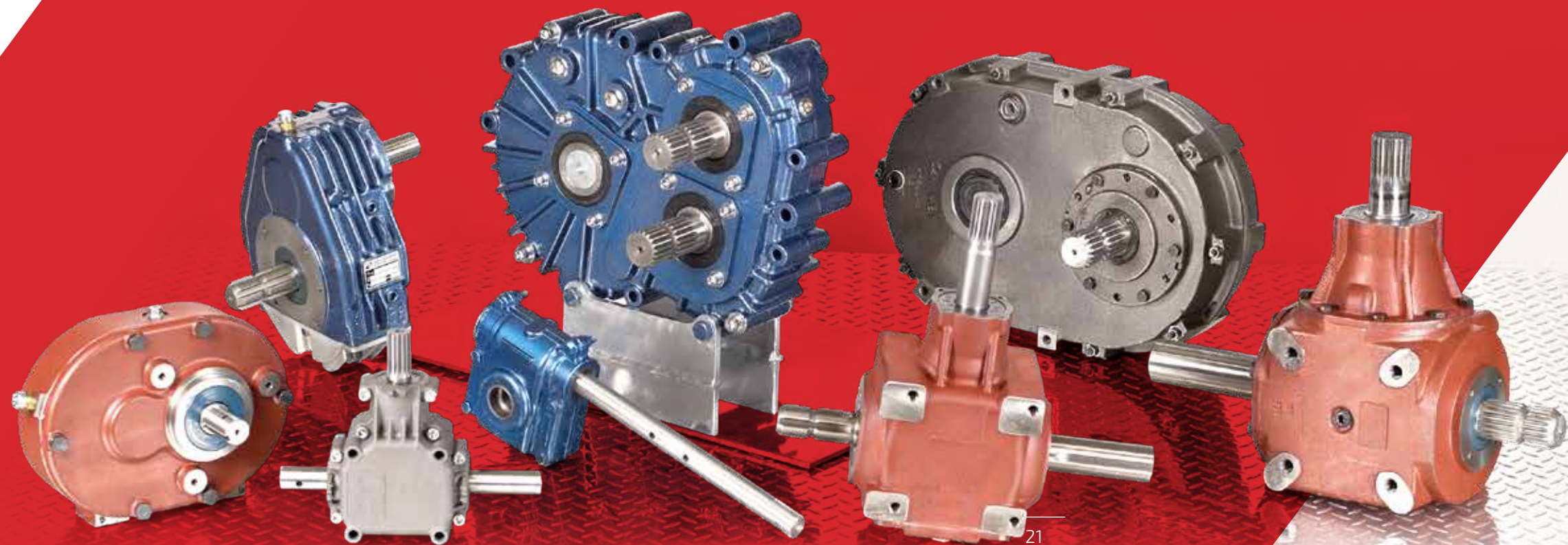


TABLE OF CONTENTS

GEARBOXES

Parallel axis series	24
Right angle series	27
Bevel helical reducer	29
In-line helical gearbox	32
Shaft-mount – PT helical reducer	34
Skew reducer – Right angle helical gearbox	37
Vertical mixer series	39
Canimex custom gearboxes	40
RXP series – Industrial shaft-mount parallel axis helical reducer	41
RXO series – Industrial bevel helical reducer	44
PG / PGA – Comer planetary gearbox	47
Vertical planetary mixer	48

GEARBOXES

- All-purpose gearboxes for both industrial and agricultural applications such as track drives, winch drives, mower bars and manure spreaders
- Ratios from 1:1 to 3000:1
- Output torque from 15 Nm to 100,000 Nm
- Parallel or angular configurations available



GEARBOXES

PARALLEL AXIS SERIES – COMER



Model size	Ratio	Input power	Output torque	Input RPM	Weight	Height	Width	Length	Applications
	I	HP	Lb-in	RPM	lb	cm	cm	cm	
A-1A	7.80	16.0	239	540	24	224.5	165	99	Miscellaneous applications
A-20A	1.88	75.0	8505	1000	57	287.5	260	240	Miscellaneous applications
RH-60Z	1.23 to 6.00	9.0 to 45.0	455 to 5530	540	40	287	214	137	Miscellaneous applications Post hole diggers Centrifugal pumps for irrigation Hammer mills Lagoon pumps
A-4A	1 to 7.00	12.0 to 90.0	1000 to 9500	540	90	348	292	134	Miscellaneous applications Hammer mills Centrifugal pumps for irrigation
A-624A	3.50 to 6.90	10.1 to 42.9	557 to 7753	540	38	319	253	111.5	Miscellaneous applications Centrifugal pumps for irrigation Hammer mills
A-624C	3.50 to 6.90	29.9 to 40.8	641 to 2186	540	48	391	308	186.5	P.T.O. generators
MR-90	1.0 to 1.90	42.0 to 87.0	5115 to 9505	540	60	347	220	131	Miscellaneous applications

GEARBOXES

PARALLEL AXIS SERIES – HELICAL REDUCERS – PERFORMANCE AT 1400 RPM



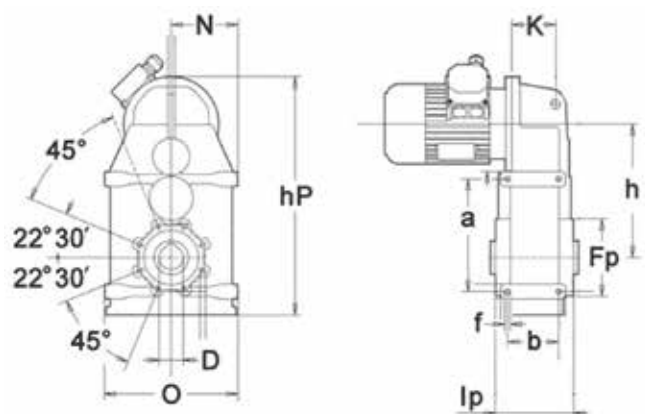
Model size	Ratio*	Input power	Output torque	Thermal limit w/o cooling	Applications		
	I	kW	Nm	HP			
25/3	17.2	0.91	100	5.5			
	27.4	0.58	100				
	42.6	0.37	100				
	75.5	0.21	100				
	135.3	0.12	100				
25/4	254.1	0.06	100				
	280.1	0.06	100				
	327.1	0.05	100				
	440.4	0.04	100				
	586.4	0.03	100				
	813.8	0.02	100				
45/3	1101	0.01	100	9			
	28.7	1.4	250				
	45.7	0.86	250				
	70.6	0.56	250				
	100.7	0.39	250				
	152.9	0.26	250				
45/4	232	0.17	250				
	301.6	0.13	250				
	430.4	0.09	250				
	566.8	0.07	250				
	653.3	0.06	250				
65/3	991.4	0.04	250			11	
	26.4	3.6	600				
	46	2.1	600				
	74.4	1.3	600				
	116.2	0.81	600				
85/3	197.9	0.48	600				
	23.8	5.3	800				
	74	2.6	1200				
	160	1.2	1200				
95/3	270	0.7	1200	15			
	23.6	10.7	1600				
	54.7	6	2100				
	86	4.4	2400				
	158.9	2.4	2400				
105/3	266.2	1.4	2400				
	20.6	19	2500				
	38.5	11.3	2800				
	70.7	6.4	2900				
115/3	110.5	4.7	3300			22	
	185.2	2.9	3500				
	26.9	24.3	4200				
	49.7	15.1	4800				
	87.2	8.8	4900				
	148.2	5.3	5000				
125/3	290	2.7	5000	30			
	22.4	48	6900				
	43.8	26.7	7500				
	97.6	12	7500				
135/3	189.1	6.2	7500			35	
	19.1	73.6	9000				
						54	

GEARBOXES

PARALLEL AXIS SERIES – HELICAL REDUCERS – PERFORMANCE AT 1400 RPM



Model size	Dimensions mm											Weight
PL series	hP	O	Ip	N	h	K	Fp	a	f	b	D	lb
25/3	225	122	96.5	61	125	95	100	115	M8 x 12	60	20	10
25/4	225	122	96.5	61	135	95	100	115	M8 x 12	60	20	10
45/3	276	154	118	77	155	112.5	110	130	M10 x 15	70	30	27
45/4	276	154	118	77	167.5	112.5	110	130	M10 x 15	70	30	28
65/3	355	196	115	98	196	124.5	120	165	M8 x 16	75	35	40
85/3	422	223	140	111.5	237	15.5	150	190	M12	95	45	81
95/3	528	273	163	136.5	298	151.5	200	240	M14	110	55	121
105/3	554	305	240	152.5	311	152	210	260	M16 x 30	140	60	224
115/3	666	345	265	172.5	372	197	240	285	M16 x 30	190	70	337
125/3	793	411	290	205.5	432	197	275	330	M20 x 35	230	90	587
135/3	886	460	330	230	487	197	310	400	M30 x 50	270	100	748



GEARBOXES

RIGHT ANGLE SERIES



Model size	Ratio	Input power	Output torque	Input RPM	Weight	Height	Width	Lenght	Applications
	I	HP	lb-in	RPM	lb	cm	cm	cm	
L-5A	1.35 to 5.00	3.9 to 14.9	265 to 2009	540	18	142	120	178	Miscellaneous applications Flail mowers Circular saws
L-25A	1.35 to 2.91	3.0 to 14.9	265 to 2009	540	9	148	96	171.5	Miscellaneous applications Flail mowers Circular saws
L-150	1.0	10.5	1212	540	70	148	84	128	Rotary cutters
LF-151A	2.54 to 3.00	45.0 to 48.0	1672 to 2106	540	46	257	180	175	Rotary mowers
LF-205J	1.47 to 1.92	30 to 40	1743 to 3044	540	35	240	162	155	Rotary cutters
LF-227J	1.22 to 1.83	75.0	4579 to 6860	540	87	280.5	217.4	198	Rotary cutters
T-19A	1.46 to 2.91	5 to 32	398 to 3743	540	31	211	144	170	Miscellaneous applications
T-22A	1.93 to 6.14	20.0 to 98.0	950 to 5926	540	64	250	202	370.5	Miscellaneous applications
T-269B	1.00 to 3.00	53.0 to 105.0	3160 to 17763	540	106	369.5	250	228	Miscellaneous applications Flail mowers
T-278A	1.00 to 2.91	29.0 to 55.0	1725 to 9638	540	81.4	302	190	202	Miscellaneous applications

GEARBOXES

RIGHT ANGLE SERIES



Model size	Ratio	Input power	Output torque	Input RPM	Weight	Height	Width	Lenght	Applications
	I	HP	lb-in	RPM	lb	cm	cm	cm	
T-279A	1.00 to 1.50	80.0 to 100.0	6700 to 13568	540	82	362	190	248	Miscellaneous applications
T-279D	1.35	85	7000	540 or 1000	141	465	192	253	Rotary mowers
T-27A	1.35 to 1.92	20.0 to 55.0	1743 to 7523	540	46	238.5	165	202	Miscellaneous applications Circular saws
T-281A	1.46 to 2.91	11.0 to 20.0	441 to 1599	540	15	156	105	196	Miscellaneous applications Flail mowers Circular saws
T-290A	1.00 to 3.00	45.0 to 95.0	2900 to 16179	540	66	317	225	222	Miscellaneous applications
T-292B	1.47 to 1.86	62 to 88	4805 to 13948	540	38	308.5	225	266	Miscellaneous applications Flail mowers
T-301B	1.00 to 3.00	61 to 178	2681 to 22613	540 or 1000	136	411.5	280	325	Miscellaneous applications Flail mowers
T-304A	1.93 to 5.33	13.5 to 54.9	591 to 8363	540	42	259.5	158	190	Miscellaneous applications Rotary mowers balers
T-331A	1.00 to 3.27	108 to 354	-	540 or 1000	250	412	316	381	Miscellaneous applications Flail mowers

GEARBOXES

BEVEL HELICAL REDUCER – PERFORMANCE AT 1400 RPM



Model size	Ratio	Input power	Output torque	Output speed	Applications
O series	I	kW	Nm	RPM	
63	7.9	3.5	170	177.2	Belt conveyors Mixers Agitators Crushers
	14.8	2.4	220	94.6	
	31.2	1.3	240	44.9	
	79.5	0.51	250	17.6	
	151.9	0.26	245	9.2	
346.4	0.12	250	4.0		
71	6.9	6.4	270	202.9	
	18.7	3.6	410	74.9	
	49.3	1.5	460	28.4	
	98.6	0.76	460	14.2	
	179.6	0.42	460	7.8	
90	387	0.19	460	3.6	
	7.2	9.7	430	194.4	
	15.7	7.5	720	89.2	
	28.8	5.2	910	48.6	
	59.5	2.5	910	23.5	
112	131.1	1.1	910	10.7	
	390	0.38	910	3.6	
	7.7	14.3	670	181.8	
	23.6	9.3	1350	59.3	
	46.8	6.1	1750	29.9	
	93.9	3.0	1750	14.9	
	194.9	1.5	1750	7.2	
	375.3	0.75	1750	3.7	

GEARBOXES

BEVEL HELICAL REDUCER – PERFORMANCE AT 1400 RPM



Model size	Ratio	Input power	Output torque	Output speed	Applications
O series	I	kW	Nm	RPM	
132	16	16.8	1700	87.5	Belt conveyors Mixers Agitators Crushers
	24.3	14.9	2300	57.6	
	41.7	13.2	3500	33.6	
	76.3	7.2	3500	18.3	
	109.4	5.0	3500	12.8	
	180	3.1	3500	7.8	
150	15.7	27.1	2700	89.2	
	30.3	26	5000	46.2	
	54.3	14.5	5000	25.8	
	86	9.2	5000	16.3	
	109.8	7.2	5000	12.8	
170	204.2	3.6	4600	6.9	
	15.5	46.8	4600	90.3	
	28.8	41	7500	48.6	
	54.3	21.8	7500	25.8	
	81.7	14.5	7500	17.1	
190	124.1	9.5	7500	11.3	
	196	5.3	6600	7.1	
	15.5	65.6	6440	90.3	
	25.2	61.2	9800	55.6	
	41.8	39.6	10500	33.5	
190	68.9	24	10500	20.3	
	113.9	14.5	10500	12.3	
	178.1	9.1	10250	7.9	

Output flange and foot available for all sizes; other flange dimensions are also available.

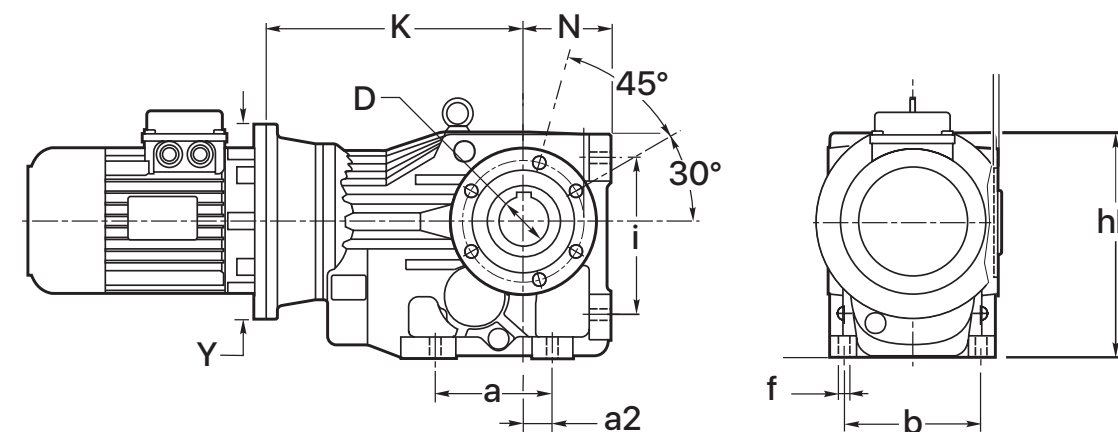
Male output shaft available in metric and imperial sizes. Nema and IEC input flanges available for all sizes.

GEARBOXES

BEVEL HELICAL REDUCER – PERFORMANCE AT 1400 RPM



O series	Dimensions (mm)											Input flange availability NEMA								Weight kg			
	a	a2	b	D	f	hP	i	N	Y	K	56	145	184	213	254	284	324	364	404				
63	110	28	100	30	11	170	115	63	160	193	√	√	√	√	√						10.5		
71	130	35	120	35	11	183	130	71	200	237	√	√	√	√	√						18		
90	120	30	140	40	14	232	160	90	250	274		√	√	√	√	√					44		
112	150	40	165	50	18	294	200	112	300	340		√	√	√	√	√	√				68		
132	240	75	190	60	22	354	n/a	156	300	413		√	√	√	√	√	√				70		
150	270	90	210	70	22	410	n/a	183	300	453			√	√	√	√	√	√			120		
170	315	110	240	90	22	458	n/a	210	350	563			√	√	√	√	√	√	√		180		
190	355	125	270	100	26	516.5	n/a	236	450	633				√	√	√	√	√	√	√	250		
											63	71	80	90	100	112	132	160	180	200	225	250	
											IEC B5 & B14												



GEARBOXES

IN-LINE HELICAL GEARBOX – PERFORMANCE AT 1400 RPM



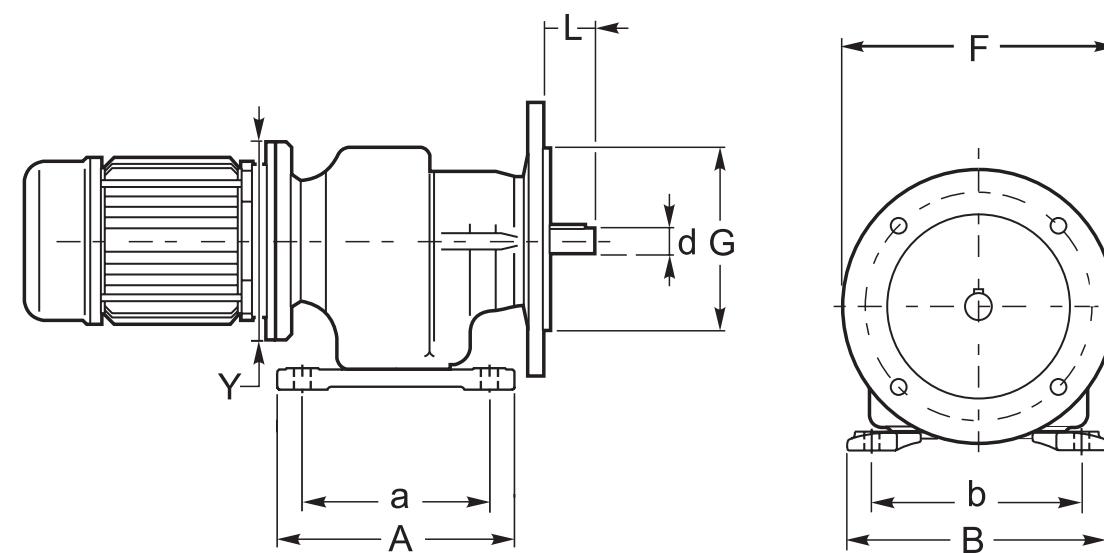
Model size	Ratio	Input power	Output torque	Thermal limit w/o cooling unit	Applications
A series	I	kW	Nm	HP	
A25/2	3.4	0.55	12	4	Conveyors Telescopic boom lifts Windrowers Rotary disc headers Crushers Mixers Agitators
	7.2	0.26	12		
	17.9	0.13	15		
A25/3	35.3	0.08	17	3	
	50.7	0.06	18		
	86.2	0.04	20		
A32/1	1.8	1.9	21.7	4	
	6.5	0.5	20.9		
A35/2	13.6	0.56	50	6	
	45.1	0.17	50		
A35/3	59.1	0.16	50	4.75	
	195.6	0.04	50		
A40/1	1.2	3.9	30	7.5	
	7	0.8	38		
A41/2	12.1	1.2	95	6	
	49.6	0.33	105		
A41/3	107.4	0.16	110	4	
	223.2	0.08	110		
A45/2	6.4	3.1	115	6.7	
	26.6	0.9	160		
A45/3	44.6	0.64	180	5.5	
	196	0.14	180		
A 60/1	1.3	15	130	12	
	2.9	8.9	170		
A 60/2	7.9	6.6	338	13	
	19.7	3	388		
A 60/3	40.3	1.6	420	9.25	
	185.2	0.36	420		
A 80/1	1.2	33	260	19	
	3.6	14	330		
A 80/2	11.1	10.7	766	20	
	24.9	5.8	940		
A 80/3	50.9	3	967	14	
	197.5	0.77	967		
A 100/1	1.3	56.4	480	21	
	5.4	13.5	530		
A 100/2	4.9	40	1291	31	
	38.3	7.8	1930		
A 100/3	36.4	8.6	1985	25	
	177.1	1.8	1985		
A 120/2	2.8	94	1700	44	
	7.7	44	2200		
	22.1	21	3000		
A 120/3	40.7	13	3300	30	
	102.6	5.1	3300		
	277.3	1.9	3300		

GEARBOXES

IN-LINE HELICAL GEARBOX – PERFORMANCE AT 1400 RPM



A series	Dimensions (mm)								Input flange LQ NEMA								Weight kg		
	a	b	B	d	F	G	L	Y	56	145	184	213	254	284	324	364			
A 25/2	71	90	11	11	120	80	22	120	√	√							1.8		
A 25/3																			
A32/1	77	110	135	19	120	80	40	80	√	√	√						2.1		
A 35/2																			
A 35/3	87	110	130	16	140	110	30	140	√	√	√						2.6		
A40/1	45	105	130	19	120	80	40	90	√	√	√	√	√	√			3.1		
A 41/2																			
A 41/3	87	110	130	20	160	110	40	160	√	√	√	√	√	√			3.1		
A 45/2																			
A 45/3	107.5	130	155	25	160	110	50	200	√	√	√	√	√	√			3.5		
A60/1	70	165	195	60	160	110	60	105		√	√	√	√	√	√		13		
A 60/2																			
A 60/3	165	135	185	30	200	130	60	250		√	√	√	√	√	√		16		
A80/1	85	185	230	38	250	180	80	120			√	√	√	√	√	√	20		
A 80/2																			
A 80/3	205	170	230	40	250	180	80	300			√	√	√	√	√	√	21		
A100/1	130	240	295	48	250	180	110	140				√	√	√	√	√	42		
A 100/2																			
A 100/3	260	215	290	50	300	230	100	350				√	√	√	√	√	55		
A 120/2																			
A 120/3	310	250	350	60	450	350	120	350				√	√	√	√	√	60		
									63	71	80	90	100	112	132	160	180	200	225
IEC B5 & B14																			



GEARBOXES

SHAFT-MOUNT – PT HELICAL REDUCER – PERFORMANCE AT 1400 RPM



Model size	Ratio	Input power	Output torque	Thermal limit w/o cooling	Applications
PT series	I	kW	Nm	HP	
80/1	5.1	16	400	20	Conveyors Telescopic boom lifts Windrowers Rotary disc headers Crushers Mixers Agitators
	7.4	9.5	360		
80/2	10.6	9.5	500	10	
	15.5	6.5	500		
	27.2	4.25	560		
	44.1	2.25	500		
	58.8	1.75	500		
100/1	5.1	31.5	800	30	
	7.4	21.5	800		
100/2	10.7	18	940	15	
	15.7	12.75	980		
	25.9	8.25	1,050		
	43.2	5.5	1,150		
	58.1	4	1,100		
125/1	5.1	59	1,500	50	
	7.7	36.5	1,400		
125/2	8.7	42.5	1,800	25	
	15.7	25.5	1,950		
	25.9	17	2,150		
	39	11.25	2,150		
	57.1	7.5	2,100		
132/1	2.8	164.5	2,300	67	
	5.33	90	2,400		
132/2	6.2	82	2,500	33	
	9.8	56	2,700		
	15.9	38.5	3,000		
	18.3	33.5	3,000		
	26.3	25	3,200		

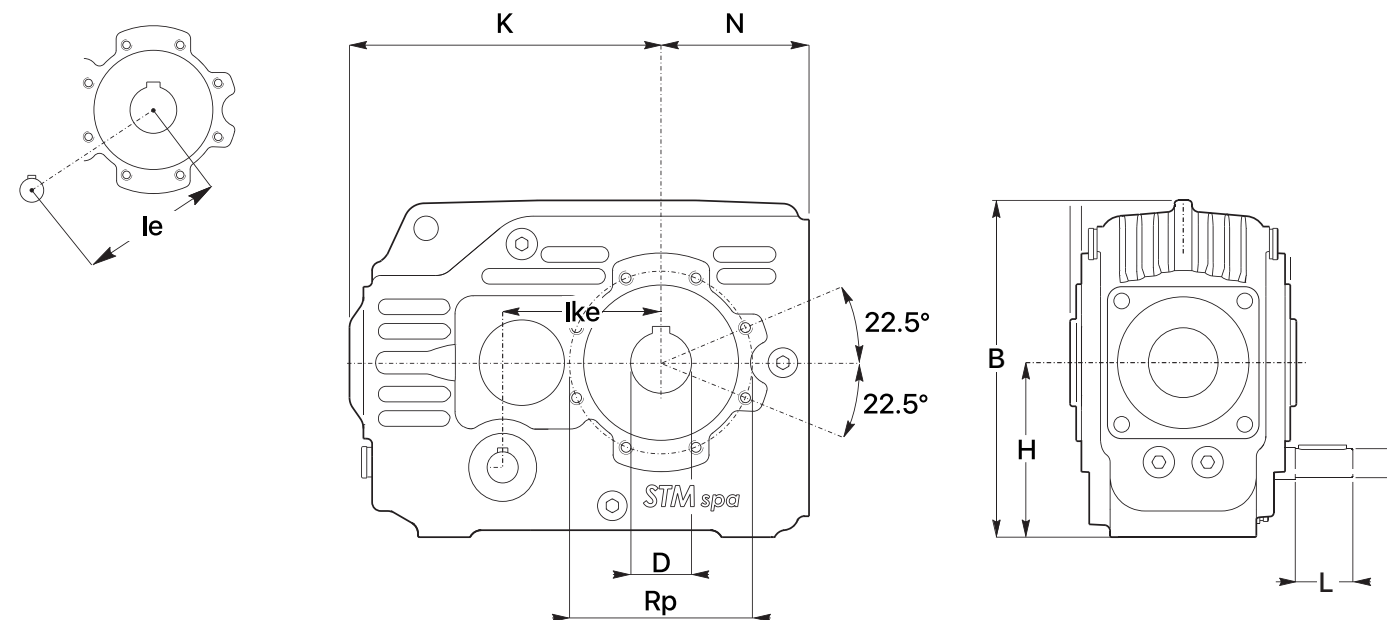
*Ratios indicated on this page are only a sample of our capabilities.

GEARBOXES

SHAFT-MOUNT – PT HELICAL REDUCER – PERFORMANCE AT 1400 RPM



Model size	Dimensions (mm)								Dimensions (in)			Weight lb
	K	N	B	le	lke	L	H	Rp	D min.	D max.	d	
80/1	179	85.5	193	80	n/a	50	100	105	3/4	1 1/4	3/4	40
80/2	179	85.5	193	n/a	91	40					1	44
100/1	221	105.5	233	100	n/a	60	120	125	1	1 3/4	1	64
100/2	221	105.5	233	n/a	128	50					1 1/8	70
125/1	276	140.5	285	127	n/a	80	145	150	1 3/8	2 1/4	1 1/8	110
125/2	276	140.5	285	n/a	166.2	60					1 1/2	123
132/1	332.5	156	566	140	n/a	112	212	175	1 1/2	2 5/8	1 3/8	143
132/2	332.5	156	566	n/a	198	80					1 3/8	154
140/1	349	175.5	372	160	n/a	80	190	200	1 1/2	2 5/8	1 7/16	220
140/2	349	175.5	372	n/a	209	80					1 7/16	242
150/1	362.5	183	655	160	n/a	125	245	200	1 3/4	2 3/4	1 5/8	242
150/2	362.5	183	655	n/a	223	112					1 5/8	264
170/1	391.5	210	733	180	n/a	140	275	225	2 1/8	3 1/4	2 3/16	383
170/2	391.5	210	733	n/a	247.5	112					2 3/16	405
190/1	437	236	831.5	200	n/a	140	315	250	2 3/4	3 1/2	2 7/16	528
190/2	437	236	831.5	n/a	277	125					2 7/16	550



GEARBOXES

SHAFT-MOUNT – PT HELICAL REDUCER – PERFORMANCE AT 1400 RPM



Model size	Ratio	Input power	Output torque	Thermal limit w/o cooling	Applications
PT series	I	kW	Nm	HP	
140/1	4.8	132	3,200	72	Conveyors Telescopic boom lifts Windrowers Rotary disc headers Crushers Mixers Agitators
	7.4	81	3,000		
140/2	10.5	78	4,000	36	
	15.3	56	4,200		
	23.3	39.5	4,500		
	36.5	27	4,800		
	57.9	15	4,200		
150/1	2.8	243	6,400	80	
	5.33	132	3,500		
150/2	6.3	120	3,700	40	
	8	100	3,900		
	13.7	64.5	4,300		
	24.8	38	4,600		
	29.8	31.5	4,600		
170/1	2.62	336	4,400	99	
	5.33	188	5,000		
170/2	8.4	131.5	5,400	49	
	12.2	97	5,800		
	15.4	84	6,300		
	25.8	53	6,700		
	28.4	48	6,700		
190/1	2.62	460	6,000	133	
	5.33	251	6,700		
190/2	6.1	260	7,800	67	

*For ratios other than indicated, please contact Canimex

GEARBOXES

SKEW REDUCER – RIGHT ANGLE HELICAL GEARBOX, 90% EFFICIENCY – PERFORMANCE AT 1400 RPM



Model size	Ratio	Input power	Output torque	Thermal power	Applications
SM	I	kW	Nm	HP	
25	8.0	1.43	70	2.15	Conveyors Telescopic boom lifts Windrowers Rotary disc headers Crushers Mixers Agitators
	10.0	1.38	85		
	14.0	1.16	100		
	20.0	0.81	100		
	25.0	0.65	100		
	35.0	0.47	100		
	45.0	0.36	100		
	56.0	0.29	100		
	72.0	0.23	100		
	80.0	0.2	100		
	90.0	0.18	100		
	100.0	0.16	100		
35	8.0	1.83	90	2.5	
	10.0	1.87	115		
	14.0	1.89	145		
	20.0	1.18	145		
	29.8	0.93	170		
	45.0	0.6	165		
	56.0	0.48	165		
	70.0	0.38	165		
	80.0	0.34	165		
	95.0	0.28	165		
	120.0	0.22	165		
	142.8	0.19	165		
45	8.0	2.24	110	3.5	
	10.0	2.36	145		
	14.0	2.33	200		
	20.0	2.14	250		
	32.0	1.27	250		
	40.0	1.02	250		
	56.0	0.73	250		
	70	0.58	250		
	86.8	0.46	245		
	100	0.39	240		
	124	0.32	240		
	148.8	0.26	240		

GEARBOXES

SKREW REDUCER – RIGHT ANGLE HELICAL GEARBOX, 90% EFFICIENCY – PERFORMANCE AT 1400 RPM

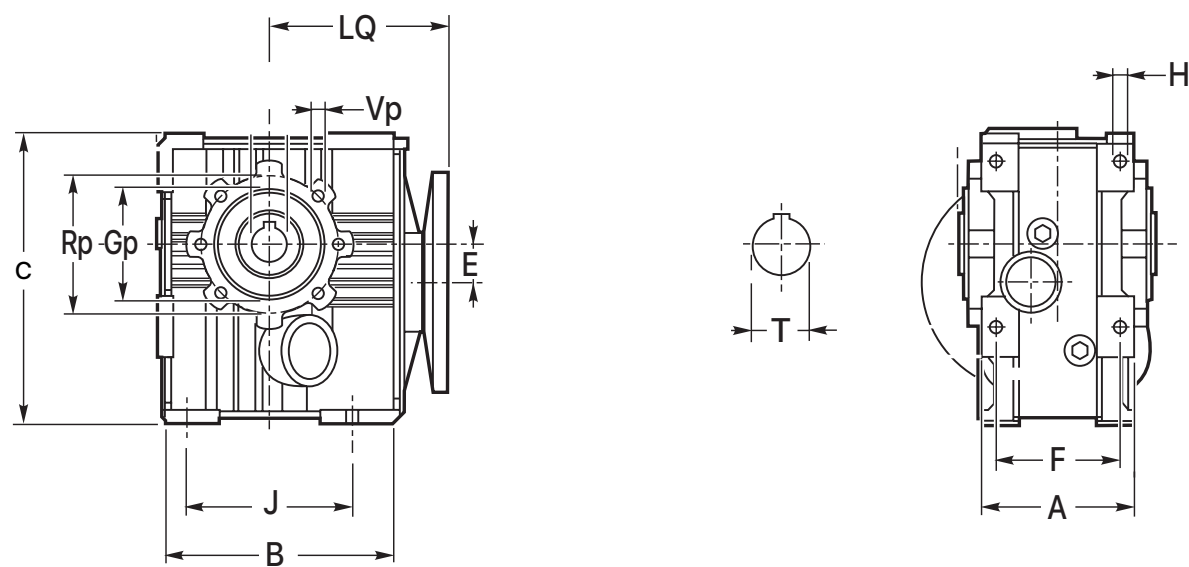


SM	Dimensions (mm)												Input flange NEMA						
	A	B	c	E	F	J	H	Gp	Rp	Vp	LQ	T	56	145	184	213			
25	90	122	172	25.5	73.5	90	9	70	85	M8	100	19	√	√	√				
35	95	130	193.5	28.5	75	100	9	80	95	M8	122.5	25		√	√				
45	110	165	210	27.5	90	120	9	80	100	M8	129.5	30		√	√	√			
													63	71	80	90	100	112	132
													IEC						

Output flanges, torque arms and foot mounts available for all sizes.

Male output shaft available in metric and imperial sizes.

Nema and IEC input flanges available for all sizes.

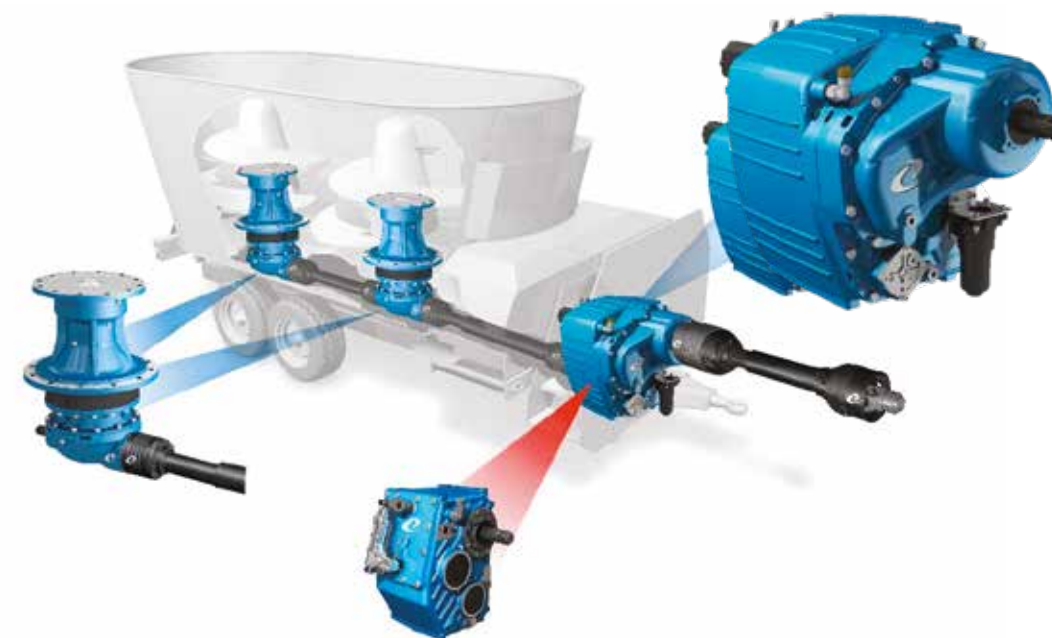


GEARBOXES

VERTICAL MIXER SERIES



Model size	Ratio	Rating @ 540 RPM	Rating @ 1000 RPM	Weight
	I	HP	HP	lb
D-732 A	1:1	80	110	136.4
	1.88:1			
	1:1	80	110	
C3A (optional hydraulic or electric shift)	1:1	125	150	220
	1.5:1			
	1.8:1			
	2.3:1			
	2.7:1			
C3A-R (optional hydraulic or electric shift)	1:1	150	180	220
	1.5:1			
	2.7:1			
	3.2:1			
	3.6:1			
	4.0:1			
A-613R (optional hydraulic or electric shift)	1:1	180	245	242
	1.3:1			
	1.5:1			
	2.7:1			



GEARBOXES

CANIMEX CUSTOM GEARBOXES

Model size	Ratio	Input shaft	Output shaft	Weight	Applications
	I	HP	ft	lb	
RH-25000	1:1	225 HP rating at 1000 RPM- 1 3/4"-20 male splines	1 3/4"-20 female splines	154	Snow and ice
RH-25000	1.84:1	225 HP rating at 1000 RPM- 1 3/4"-20 male splines	1 3/4"-20 female splines	154	Snow and ice
RH-60000	1.85:1	500 HP rating at 1000 RPM 1 3/4"-20 male splines	2 1/4"- 22 female splines	285	Snow and ice



GEARBOXES

RXP SERIES – INDUSTRIAL SHAFT-MOUNT PARALLEL AXIS HELICAL REDUCER – PERFORMANCE AT 1450 RPM



Model Size	Ratio	Input power	Output torque	Output speed	Applications
RXP	I	HP	lb-in	RPM	
802/2	4.6	134	25667	315	Trailer mixers Snowblower Conveyors
	7.13	92	27437	203	
	10.3	64	27437	141	
	12.7	54	28322	115	
	16	43	28322	91	
	19	13	28322	76	
804/2	4.63	193	37173	313	
	6.38	146	38943	227	
	8.02	117	38943	181	
	11	87	39828	132	
	13.6	70	39828	107	
	19	51	40713	76	
806/2	4.46	276	51334	325	
	7.16	196	58415	203	
	9	158	59300	161	
	12.4	117	60185	117	
	18.2	80	61070	79	
	21.9	67	61955	66	
808/2	4.44	382	70806	326	
	6.13	324	83197	236	
	9.22	221	84967	157	
	12	172	85852	121	
	17.7	118	87622	82	
	23.6	90	88507	61	
812/2	4.53	631	119485	320	
	6.27	588	154003	231	
	8.91	461	171704	163	
	12.5	335	174360	116	
	15.7	269	177015	92	
	18.7	228	177900	77	
816/2	4.63	1190	230119	313	
	7.14	1007	300040	203	
	11	739	338984	132	
	13.6	603	342524	107	
	15.9	519	345179	91	
	19	440	348719	76	
820/2	4.44	3220	597425	326	
	5.5	2860	656725	264	
	8.16	1985	676197	178	
	15	1114	697439	97	
	17.7	950	702749	82	
	19.4	873	706290	75	

GEARBOXES

RXP SERIES – INDUSTRIAL SHAFT-MOUNT PARALLEL AXIS HELICAL REDUCER – PERFORMANCE AT 1450 RPM



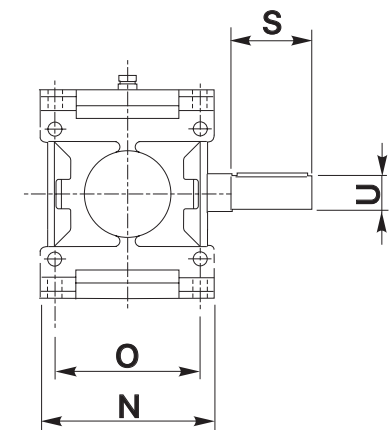
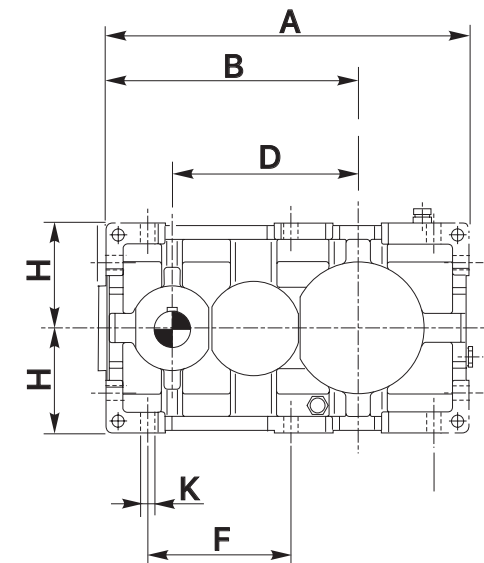
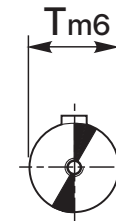
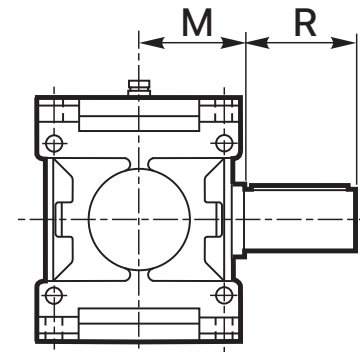
Model size	Ratio	Input power	Output torque	Output speed	Applications
RXP	I	HP	lb-in	RPM	
824/2	4.53	6464	122140	320	Trailer mixers Snowblower Conveyors
	5.61	5727	134530	258	
	7.89	4188	138070	184	
	11.6	2905	140730	125	
	15.7	2174	142500	92	
	20.6	1681	145150	70	
826/2	4.6	8937	171700	315	
	5.7	7755	184980	254	
	7.13	6271	186750	203	
	10.3	4426	190290	141	
	13.6	3389	192950	106	
	21	2252	197370	69	
828/2	4.63	12477	240740	313	
	6.38	9893	263750	227	
	8.02	7965	266410	181	
	11	5905	270830	132	
	13.6	4819	273490	107	
	17.4	3826	277030	84	

GEARBOXES

RXP SERIES – INDUSTRIAL SHAFT-MOUNT PARALLEL AXIS HELICAL REDUCER – PERFORMANCE AT 1450 RPM



RXP	Dimensions (mm)										Weight	Output shaft			
	A	B	D	F	H	K	N	O	S	U	lb	RXP	M	R	T
802	435	305	225	172.5	125	18	213	180	80	32	191	802	109	112	60
804	492	342	252	195	140	20	237	200	80	35	264	804	121	125	70
806	555	385	285	219.5	160	22	269	225	112	45	378	806	137	140	80
808	622	432	320	246	180	25	297	250	112	45	519	808	151	160	90
812	785	545	405	308	225	30	379	315	140	60	1025	812	192	200	110
816	950	670	505	388	280	36	479	400	160	70	1993	816	242	250	140
820	1195	840	640	492.5	355	42	599	500	180	90	3912	820	302	315	180
824	1400	1020	810	640	450	48	761	630	200	110	6514	824	383	400	220
826	1575	1145	900	715	500	52	855	710	225	125	8580	826	430	450	250
828	1797	1301	1010	805	560	56	965	800	250	140	13640	828	485	500	280



GEARBOXES

RXO SERIES – INDUSTRIAL BEVEL HELICAL REDUCER – PERFORMANCE AT 1450 RPM



Model size	Ratio	Input power	Output torque	Output speed	Applications
RXO	I	HP	lb-in	RPM	
802/2	19.4	36	2830	75	Trailer mixers Snowblower Conveyors
	28.5	25	2920	51	
	38.6	19	2920	38	
	49.6	15	3010	29	
	69.2	11	3010	21	
	97.1	8	3100	14.9	
804/2	19.4	52	4040	75	
	30.6	34	4160	47	
	41.9	25	4250	35	
	58	18	4340	25	
	81.3	13	4340	17.8	
	96.8	11	4430	15	
806/2	20.5	75	6200	71	
	28	55	6280	52	
	34.6	46	6370	42	
	52.1	31	6460	28	
	72.5	22	6550	20	
	112	15	6730	13	
808/2	19.7	110	8760	74	
	27.1	82	8940	54	
	39.3	58	9120	37	
	50.5	46	9200	29	
	70.5	34	9380	21	
	121	20	9560	12	
812/2	19.1	231	17790	76	
	30.1	150	18230	48	
	45.3	102	18590	32	
	57.2	82	18850	25	
	80.2	59	19210	18.1	
	95.6	50	19290	15.2	
816/2	19.4	444	34870	75	
	26.6	330	35400	55	
	38.5	232	36110	38	
	49.5	182	36550	29	
	69.1	133	37170	21	
	96.8	97	37790	15	
820/2	19.7	886	70720	74	
	27.1	656	71780	54	
	39.3	460	73200	37	
	59.2	312	74700	25	
	83	227	75930	17.5	
	98.9	192	76650	14.7	

GEARBOXES

RXO SERIES – INDUSTRIAL BEVEL HELICAL REDUCER – PERFORMANCE AT 1450 RPM



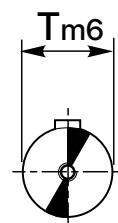
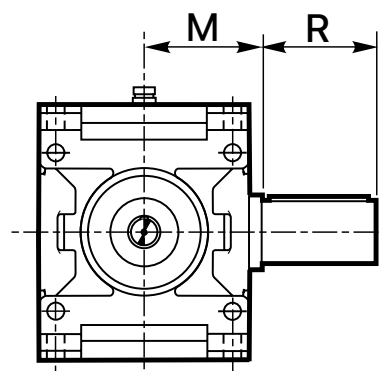
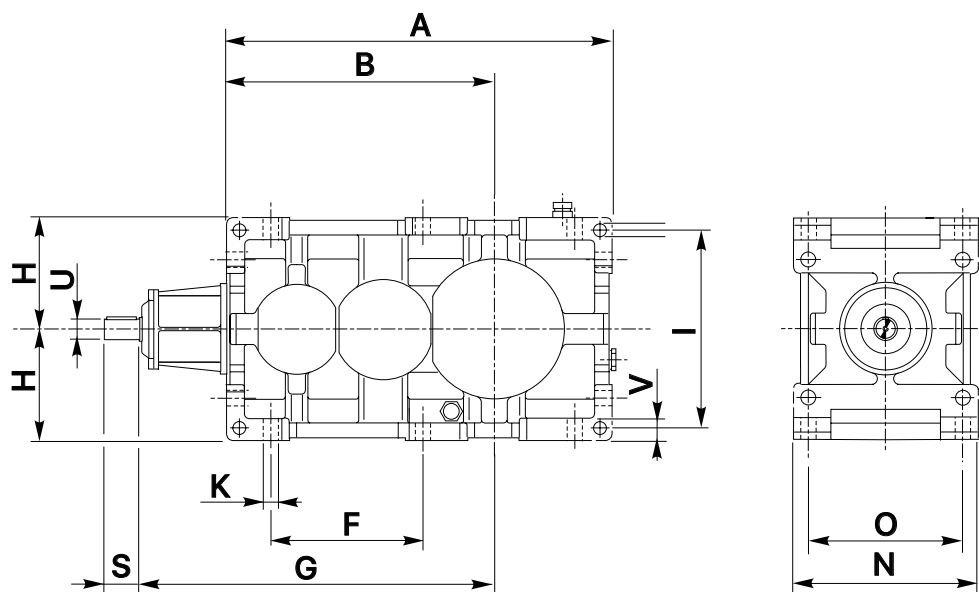
Model size	Ratio	Input power	Output torque	Output speed	Applications
RXO	I	HP	lb-in	RPM	
824/2	19.4	1835	144270	75	Trailer mixers Snowblower Conveyors
	28.6	1272	147000	51	
	38.7	953	149580	38	
	57.2	658	152230	25	
	80.2	477	154890	18.1	
	105	367	156660	13.8	
826/2	19.5	2430	191180	75	
	25	1965	199140	58	
	42.3	1193	204450	34	
	62.3	824	208000	23	
	75.1	690	209760	19.3	
	107	493	213300	13.6	
828/2	19.8	3099	248700	73	
	27.1	2582	283220	54	
	39.3	1814	288530	37	
	57.6	1261	294730	25	
	81.2	912	299160	17.9	
	96.7	772	301810	15	

GEARBOXES

RXO SERIES – INDUSTRIAL BEVEL HELICAL REDUCER – PERFORMANCE AT 1450 RPM



RXO	Dimensions (mm)										Weight lb	Output Shaft			
	A	B	F	H	K	N	O	U	S	G		RXO	M	R	T
802	435	305	172.5	125	18	213	180	22	40	405	216	802	109	112	60
804	492	342	185	140	20	237	200	24	45	452	288	804	121	125	70
806	555	385	219.5	160	22	269	225	28	50	510	403	806	137	140	80
808	622	432	246	180	25	297	250	32	56	570	543	808	151	160	90
812	785	545	307.5	225	30	379	315	40	70	720	1049	812	192	200	110
816	950	670	388	280	36	479	400	50	90	905	2017	816	242	250	140
820	1195	840	492.5	355	42	599	500	60	112	1140	3936	820	302	315	180
824	1400	1020	640	450	48	761	630	80	140	1440	6538	824	383	400	220
826	1575	1145	715	500	52	855	710	90	160	1610	8604	826	430	450	250
828	1797	1301	805	560	56	965	800	100	180	1810	13664	828	485	500	280



GEARBOXES

PG / PGA – COMER PLANETARY GEARBOX



Model PG /PGA	Output torque kNm	Ratio I	Output shaft							Input			
			MS	MC	PS	PC	F	FS	CPC	KEYED	HYD	ELEC	
100	1.1	3.5 to 3422.1	✓	✓	✓	✓	✓	✓	✓	Keyed: D.28 mm - ABx7x40 / D.42 mm -A12x8x70 Splined: 1"3/8 Z=6	SAE: A-A A B B/B C C-C	NEMA C: 143TC-145TC / 182TC-184TC / 213TC-215TC UNEL/IEC B%: H63/H71/ H80/H90/H100-112/H132	
160	1.7	3.5 to 3422.1	✓	✓	✓	✓	✓	✓	✓				
250	3.5	3.7 to 2369	✓	✓	✓	✓	✓	✓	✓				
500	5.1	3.7 to 1845	✓	✓	✓	✓	✓	✓	✓				
700	7.0	3.6 to 2969			✓	✓			✓	Keyed: D.28 mm - ABx7x40 / D.42 mm -A12x8x70 / D.65 mm -A18x11x90 Splined: 1"3/8 Z=6	SAE: A-A A B B-B C C-C D E F	NEMA C: 286T / 326T / 365T UNEL/ IEC B5: H1600/ H180/H200/H225	
1000	12.2	3.5 to 2230	✓	✓				✓	✓				✓
1600	18.0	3.5 to 2230	✓	✓	✓	✓	✓	✓	✓				✓
1800	18.0	13.0 to 1216	✓	✓	✓	✓	✓	✓	✓				✓
2500	30.7	4.0 to 1774	✓	✓				✓	✓	Keyed: D.28 mm - ABx7x40 / D.42 mm -A12x8x70 / D.65 mm -A18x11x90 / D.90 mm -A25x14x160 Splined : 1"3/8 Z=6	SAE: A-A A B B-B C C-C D E F	UNEL/IE B5: H160/H180/H200/H225/H250/H280	
3000	30.7	14.2 to 1425	✓	✓				✓	✓				✓
3500	37.5	4.0 to 1290	✓	✓				✓	✓				✓
5000	60.8	4.0 to 1982	✓	✓				✓	✓				✓
6500	69.3	3.83 to 1008	✓	✓				✓	✓	Keyed: D.28 mm - ABx7x40 / D.42 mm -A12x8x70 / D.65 mm -A18x11x90 / D.90 mm -A25x14x160 Splined : 1"3/8 Z=6	SAE: A-A A B B-B C C-C D E F	UNEL/IE B5: H160/H180/H200/H225/H250/H280	
9000	99.0	4.0 to 1623	✓	✓				✓	✓				✓

PG-PGA						
MS	MC	PS	PC	F	FS	CPC
Mounting flange and splined shaft	Mounting flange and keyed cylindrical shaft	Mounting flange and heavy-duty splined shaft	Mounting flange and heavy-duty keyed cylindrical shaft	Mounting flange and female splined shaft	Shaft-mount	Foot-mount and keyed cylindrical shaft

GEARBOXES

VERTICAL PLANETARY MIXER



Model	Ratio	Continuous torque	Peak torque	Weight	Nominal input speed
PG / PGA	I	Nm	Nm	lb	RPM
PG 1802 VM	17.7	17975	35950	451	540.1000
PGA 2002 VM	13.4	17975	35950	562	540
PGA 2003 VM	25.9	19500	39000	641	1000
PGA 1702 VM	13.4	23500	39000	562	540
PGA 1703 VM	25.9	23500	39000	641	1000
PGA 2102 VM	17.5	25500	52000	562	540
PGA 2103 VM	29.9	25500	52000	641	1000
PGA 2502 VM	19.6	23880	47760	925	Hydraulic-driven rear 750 RPM
PGA 2503 VM	86.7	20000	40000	925	Hydraulic-driven front 3000 RPM
PG 3002 VM + T269	30.2	30760	61520	925	540.1000
PGA 3003 VM	29.4	30760	61520	925	1000
PGA 4203 VM	31.6	36200	72400	1111	1000



CONTRIBUTING TO PEOPLE'S QUALITY OF LIFE, EVERY DAY.

